



Renewal of Panels 2012

Per Bergman

Director of Scientific Evaluation of Regulated Products

Stakeholder Platform plenary meeting
Parma, 20 and 21 March 2012

Procedure on appointment of Panel Members (ED Decision 14 March 2011)

Step	Date
<i>EFSA Evaluation Team (Art. 3)</i>	<i>15 March 2011</i>
<i>Call for expression of interest for membership of the Scientific Committee and Scientific Panels (Art. 2)</i>	<i>31 March - 17 June 2011</i>
<i>Screening of candidates for validity and eligibility (Art. 4)</i>	<i>17 June - 12 July 2011</i>
<i>Evaluation of all eligible candidates for scientific excellence by EFSA staff (Art. 5)</i>	<i>18 July – 11 December 2011</i>
<i>External review of the internal evaluation process (Art. 6)</i>	<i>14 November 2011- 17 January 2012</i>
<i>Screening of Annual Declaration of Interests (Art. 7)</i>	<i>11 December 2011- 17 February 2012</i>
<i>Shortlist sent to Advisory Forum for comments (Art. 7)</i>	<i>17 -23 February 2012</i>
<i>Candidates proposed for nomination to the MB (Art. 8)</i>	<i>29 February 2012</i>

EFSA Evaluation Team (Art. 3)

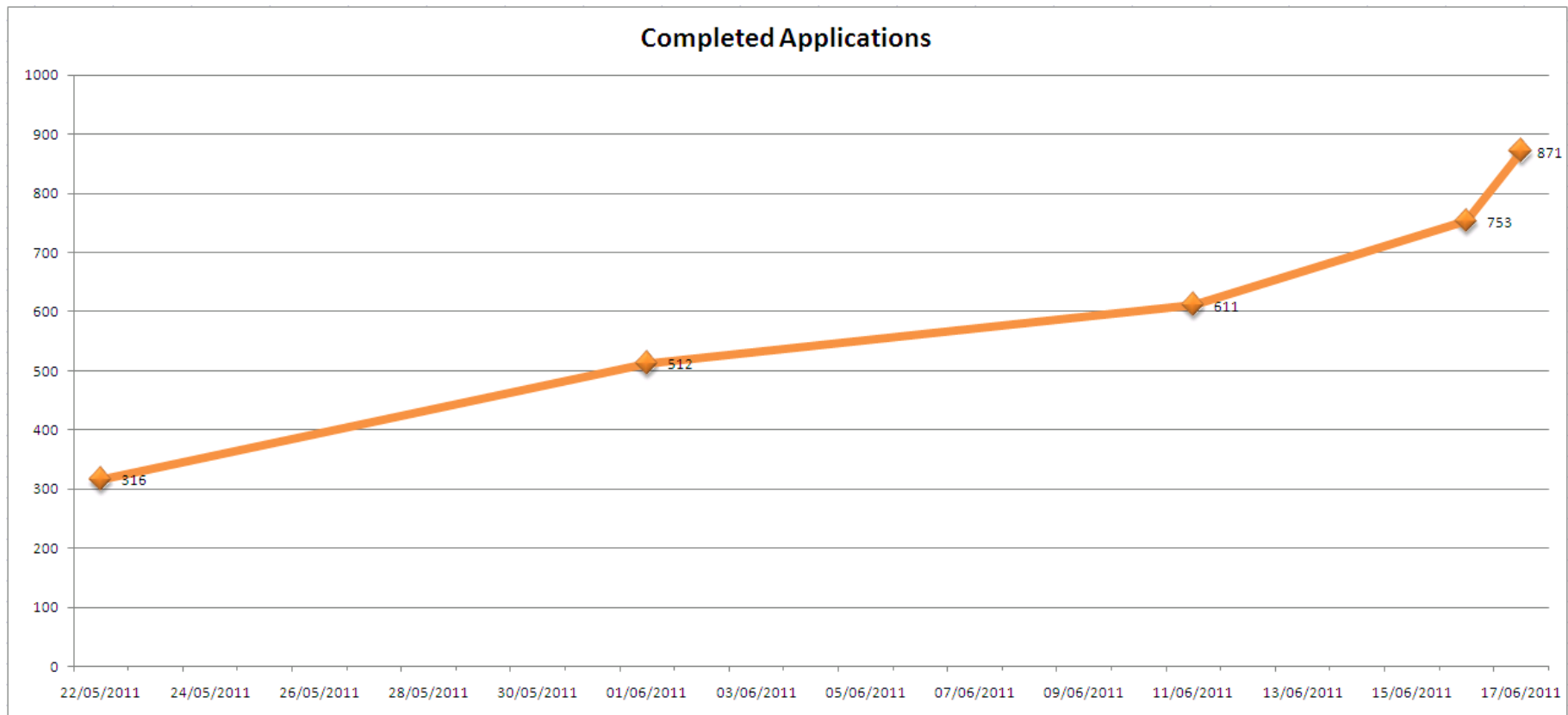
The Executive Director of EFSA established the EFSA Evaluation Team comprising

- Director of Science Strategy and Coordination (Chair)
- Director of REPRO
- Director of RASA
- Heads of all relevant Units of the RASA, REPRO, SCISTRAT
- Project Coordinator

With the support of

- LRA
- HUCAP
- IT

Completed Applications (Art. 2)



During the extension of the call (31 May to 17 June), 361 additional experts applied, for a total of 871 applicants

Screening of candidates for validity and eligibility (Art. 4)

Number of applications and of eligible candidates in 2009 and 2012

	2009	2012	Increase (%)
Total number of applications	848	871	2.7
Total number of eligible applicants	732 (86%)	793 (91%)	8.4

The Scientific evaluation (Art. 5)

Internal evaluation by EFSA

- 793 candidates eligible
- Each Panel evaluated by two internal evaluators for the selection criteria (specific areas Scientific Panel + other general selection criteria)
- Based on the scores candidates were grouped in two categories: low ranking group (<66) vs. high ranking group (≥ 66)

External evaluation

- Evaluation of 10% sample of the eligible applications = 176 eligible candidates (5% in the high ranking group, 5% in the low ranking group)
- Discrepancy = evaluation of external evaluators and internal evaluators falls in different ranking group
- If discrepancy between the internal and the external evaluators $\geq 20\%$ after discussion, re-screening and re-sampling is required

Evaluation of all eligible candidates for scientific excellence by EFSA staff (Art 5)

Points	Panel Specific Areas of competence i.e. assessed for each application
25 (SC=30)	Experience in <u>scientific risk assessment</u> and/or providing <u>scientific advice</u>
20 (SC=15)	Proven <u>scientific excellence</u> in one, or preferably several fields linked to the area covered by the SC or the SP preferred.
15	Experience in <u>peer reviewing</u> scientific work and publications
Points	General Criteria for all applications
10	Ability to <u>analyze</u> complex information and dossiers
10	Professional experience in a <u>multidisciplinary environment</u> , preferably in an international context
10	Experience in <u>scientific project management</u>
10	Proven <u>communication</u> skills
100	Maximum

Evaluation of eligible candidates (Art. 5)

Out of **871**
Experts Applying

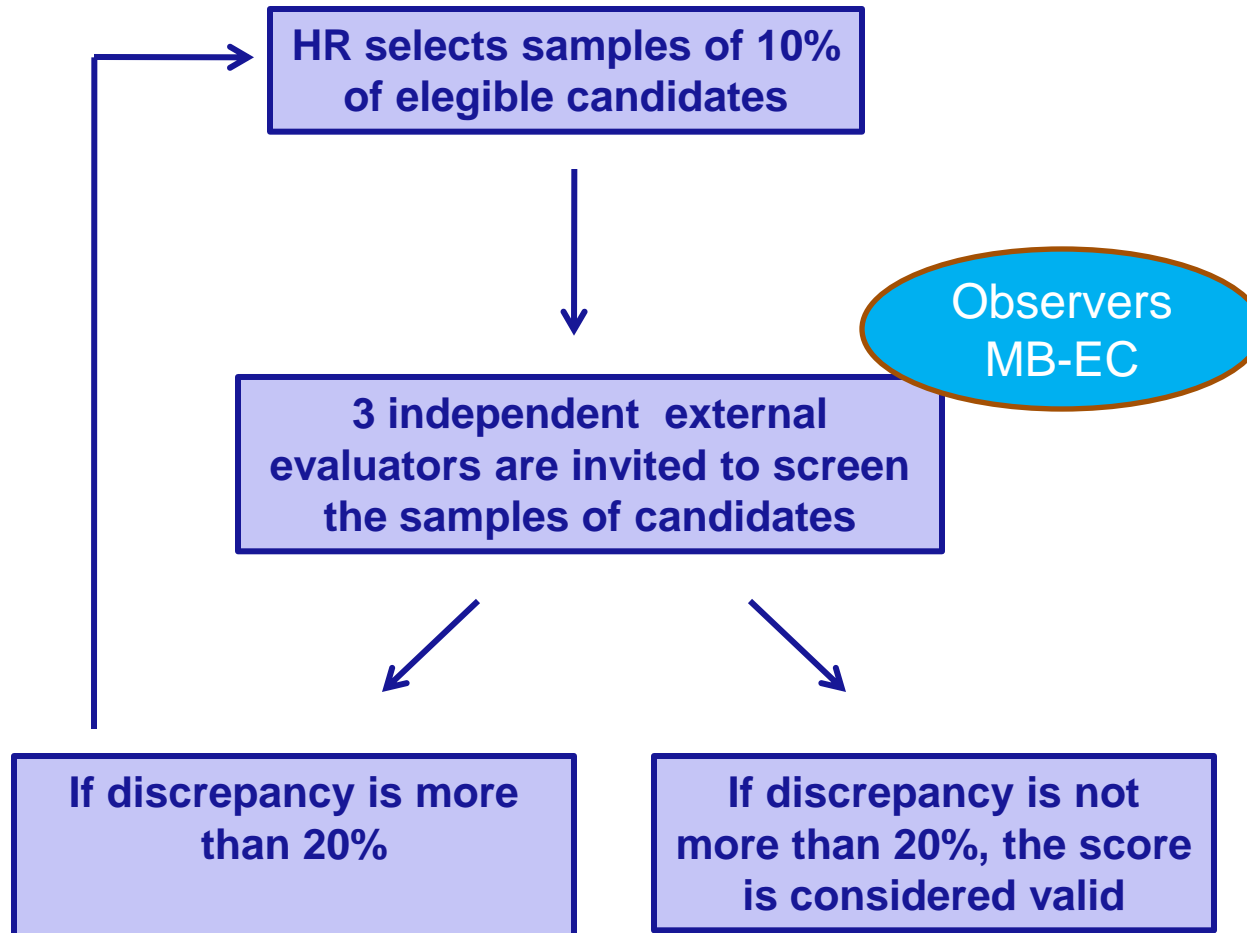
793 Eligible

78 non-
Eligible

447 High
Ranking (≥ 66)

346 Low
Ranking (< 66)

External review of the internal evaluation process (Art. 6)



External review of the internal evaluation process (Art. 6)

First sample	<i>2011</i> <i>% discrepancies</i>	<i>2012</i> <i>% discrepancies</i>
AHAW	9	5
ANS	7	6
BIOHAZ	10	24
CEF	38	0
CONTAM	8	19
FEEDAP	14	11
GMO	17	0
NDA	13	8
PLH	25	0
PPR	0	8
SC	24	6
TOTAL	15	9

Re-sampling		
BIOHAZ	-	6
CEF	8	-
CONTAM	-	15
PLH	20	-
SC	14	-
TOTAL post re-sampling	11	6

Screening of Annual Declaration of Interests for each Application scored ≥ 66 (Art. 7)

- First ADol of 447 High Ranking candidates in accordance with EFSA's implementing rules applicable at the time of the launch of the call
- EET has also screened the ADols with the new implementing rules

Shortlisted High Ranking candidates

447 High Ranking candidates

66 excluded

381 shortlisted

7 withdrawals

27 conflict of interest (CoI)

32 eliminated for not replying to requests to update ADol

Candidates proposed for nomination to the MB (Art. 8)

Advice from the Advisory Forum



Expertise required for the Scientific Panel



Position of the candidate on the shortlist



Thorough knowledge of English



Nationality and gender



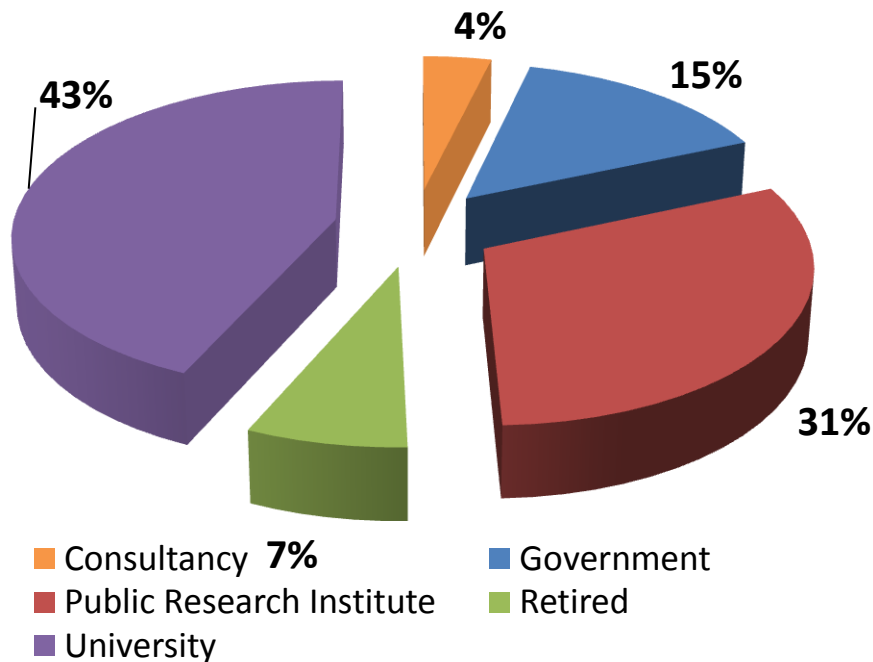
Nomination of Panel members

Proposed for Nomination and Reserve List

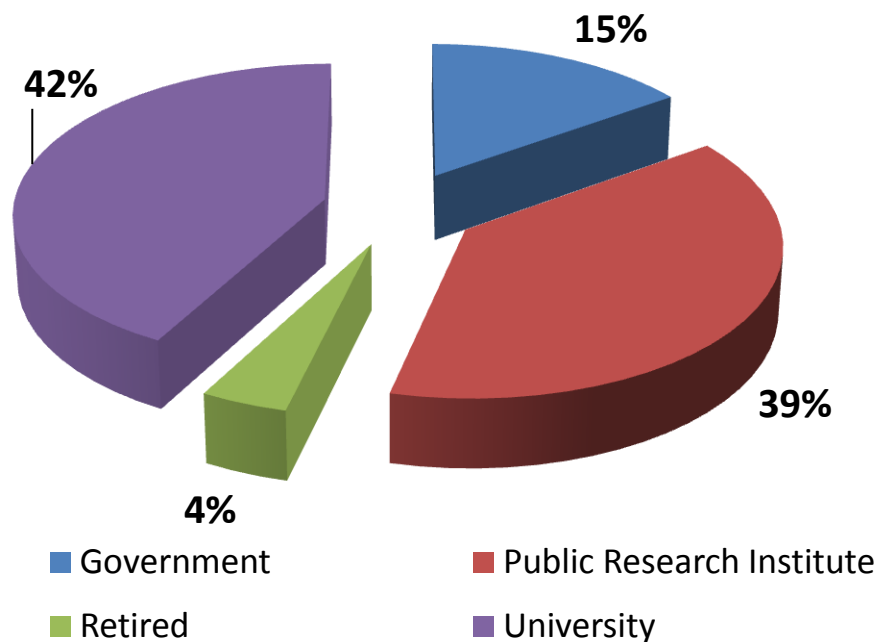


Proposed for nomination: affiliation/employment

2009

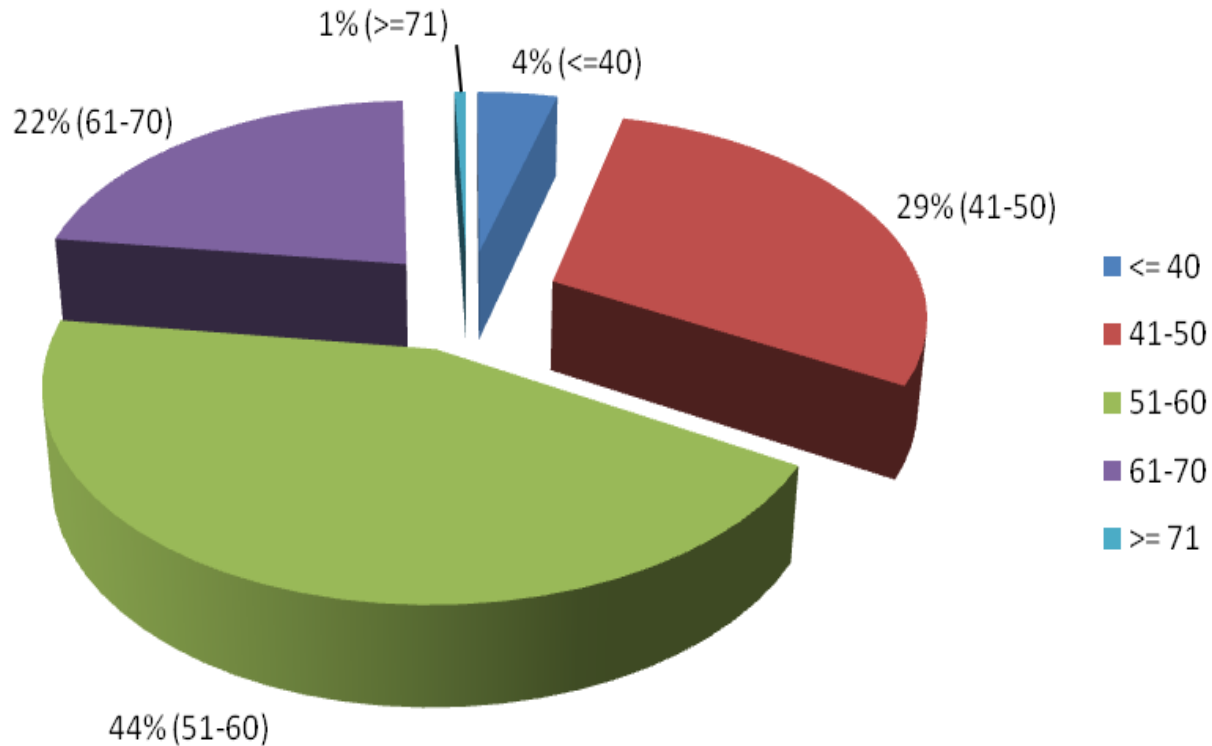


2012



- EFSA will be able to benefit again from very strong expertise originating primarily from universities and public research institutes and from governmental bodies
- Decrease in 2012 in the number of consultants and retired experts

Age and gender distribution (2012)



Proposed for nomination: age and gender

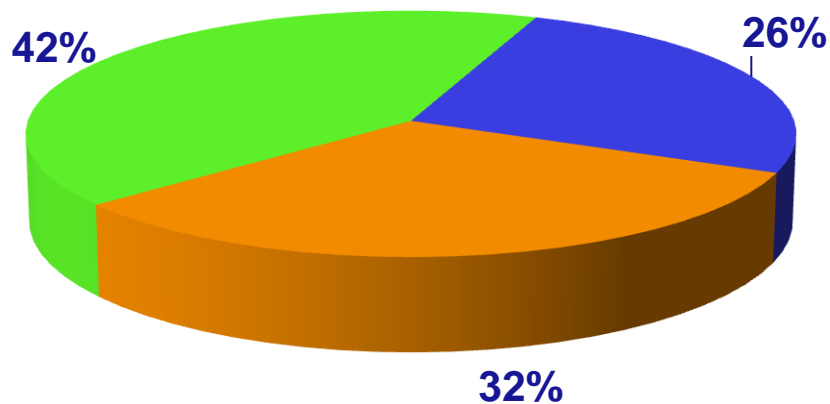
2009	2012
Average age: 55 years	Average age: 53.6 years
74% male	75 % male

Age

- in comparison with the 2009 renewal, represents a decrease on average age of 1.4 years
- Lower average age for females compared to men (51.3 vs 54.4)

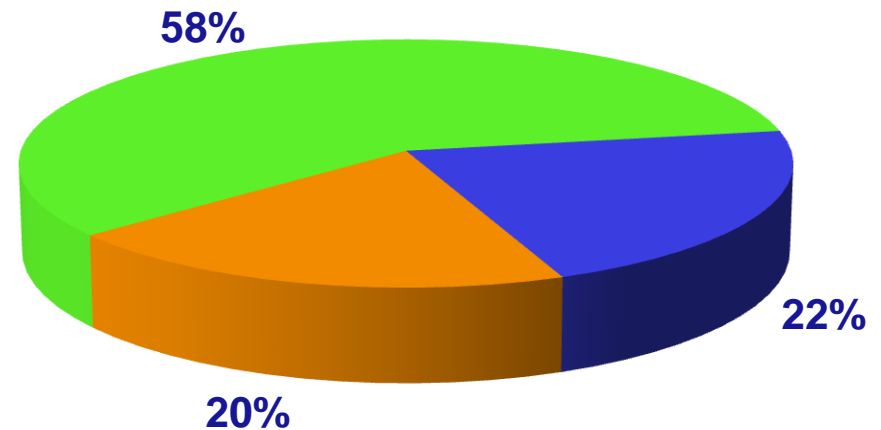
Proposed for nomination: number of mandates

2009 – 1st to 3rd mandate



■ First Mandate ■ Second Mandate
■ Third Mandate

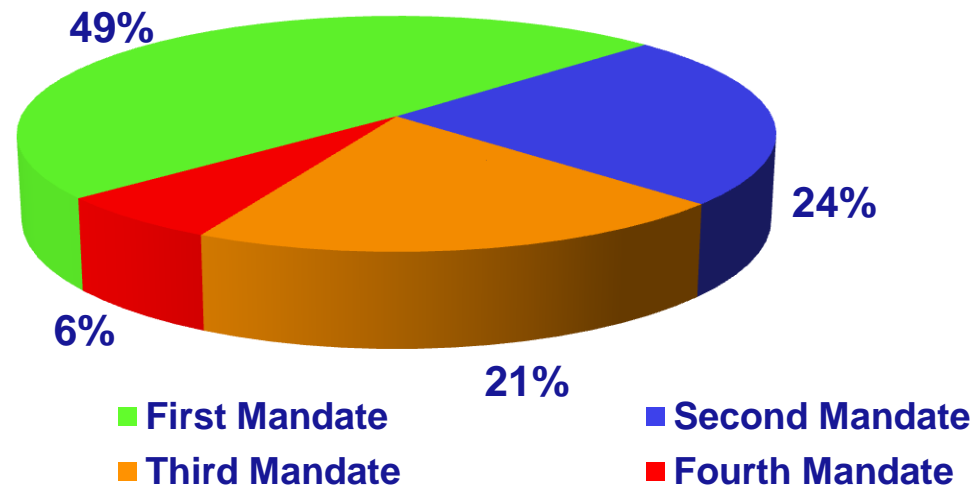
2012 - 1st to 3rd mandate



■ First Mandate ■ Second Mandate
■ Third Mandate

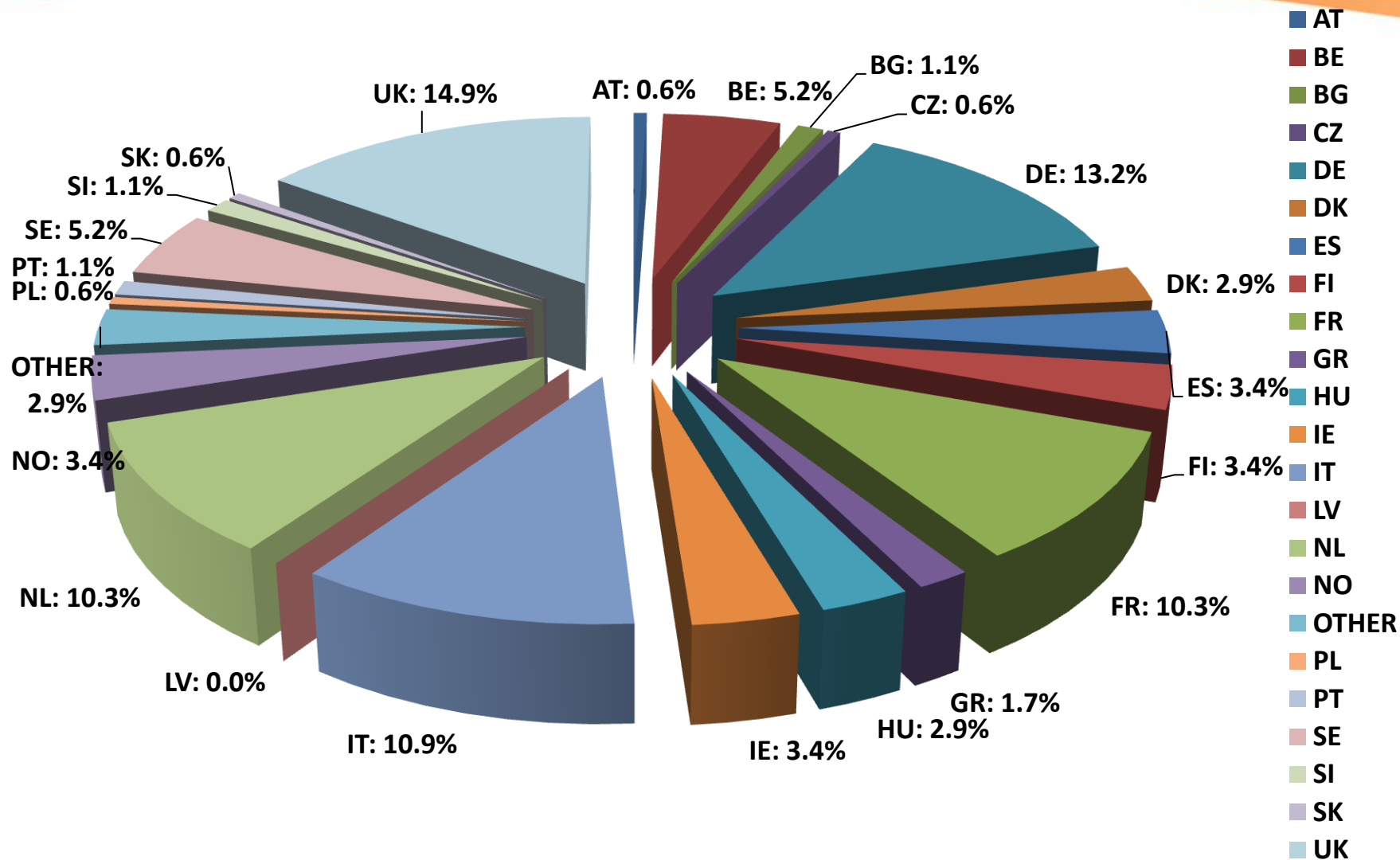
Proposed for nomination: number of mandates

2012 – 1st to 4th term

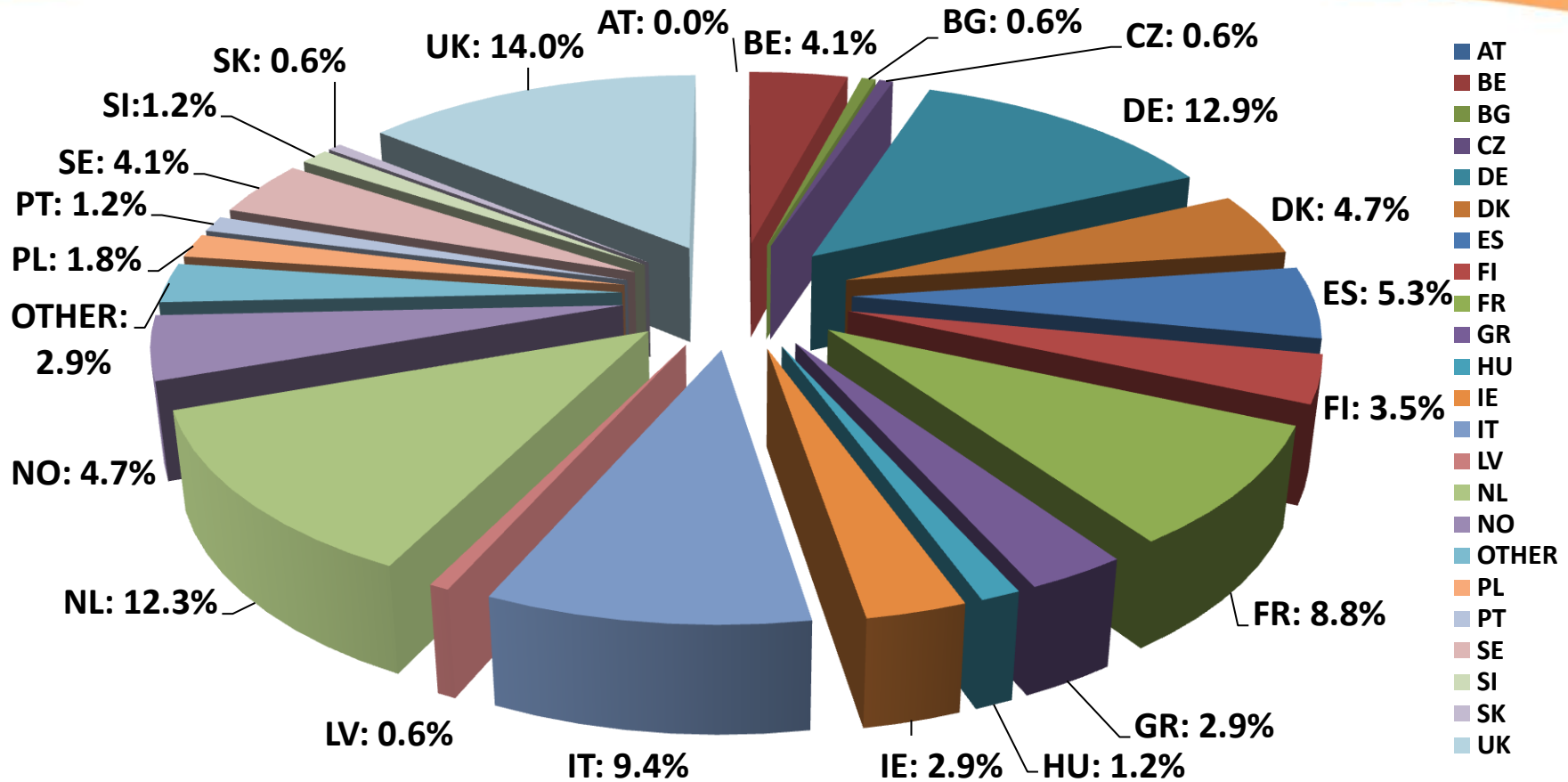


- Panel members have applied for a 4th term and are proposed for another Panel than the one they served on continuously before (6%)
- This reduces the true 1st mandate proposed panel members to 49% i.e. closer to the 42% in 2009

2009 Proposed for nomination: nationalities



2012 Proposed for nomination: nationalities



- Most candidates from UK, Germany, The Netherlands, Italy and France; consistent with 2009
- 21 EU MSs and only 4 experts from 2 non-EU countries are proposed for nomination, compared to 6 in 2009