

From Science to Policy

Climate change as a driver of emerging risks
for food & feed safety, plant, animal health
and nutritional quality

Synergies with IPCC & Foresight work



UCLA

Institute of the
Environment and
Sustainability

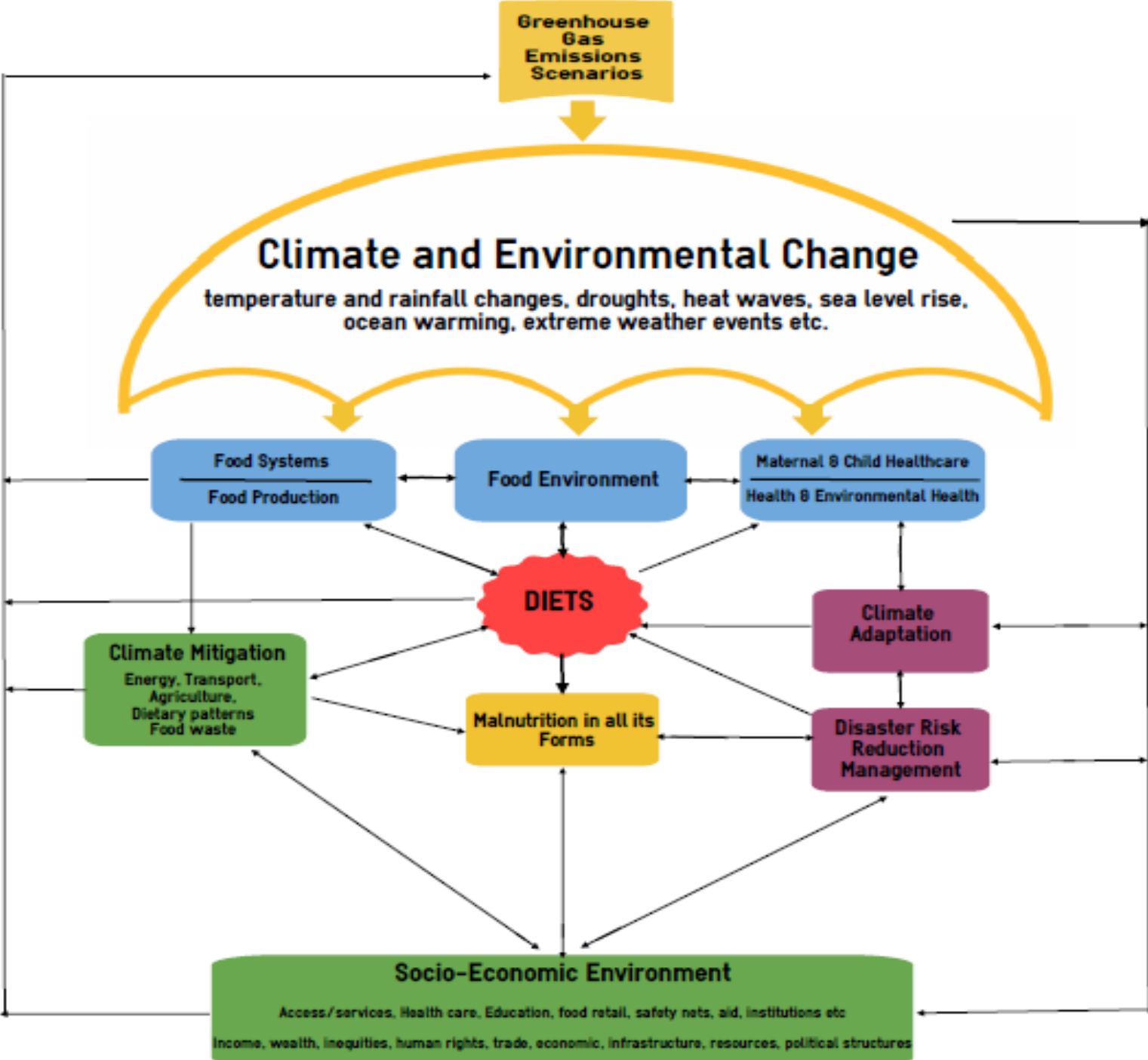
Cristina Tirado von der Pahlen, DVM, MS, PhD
Director of Sustainability Health Education SHE Foundation
Mediterranean Climate Cities Consortium MC4
cristinatirado@ucla.edu

Outline

- Overview of activities related climate change
- How CLEFSA has been useful for your activities
- Potential synergies with other initiatives

Mainstreaming sustainable and healthy food systems and diets @UNFCCC







United Nations
Framework Convention on
Climate Change

Co-benefits of changing Diets

“opportunities to achieve co-benefits from actions that reduce emissions and at the same time improve health by shifting consumption away from animal products, especially from ruminant sources, in high-meat consumption societies, toward less emission intensive healthy diets” (IPCC AR5 WGII chapter 11, 2014)

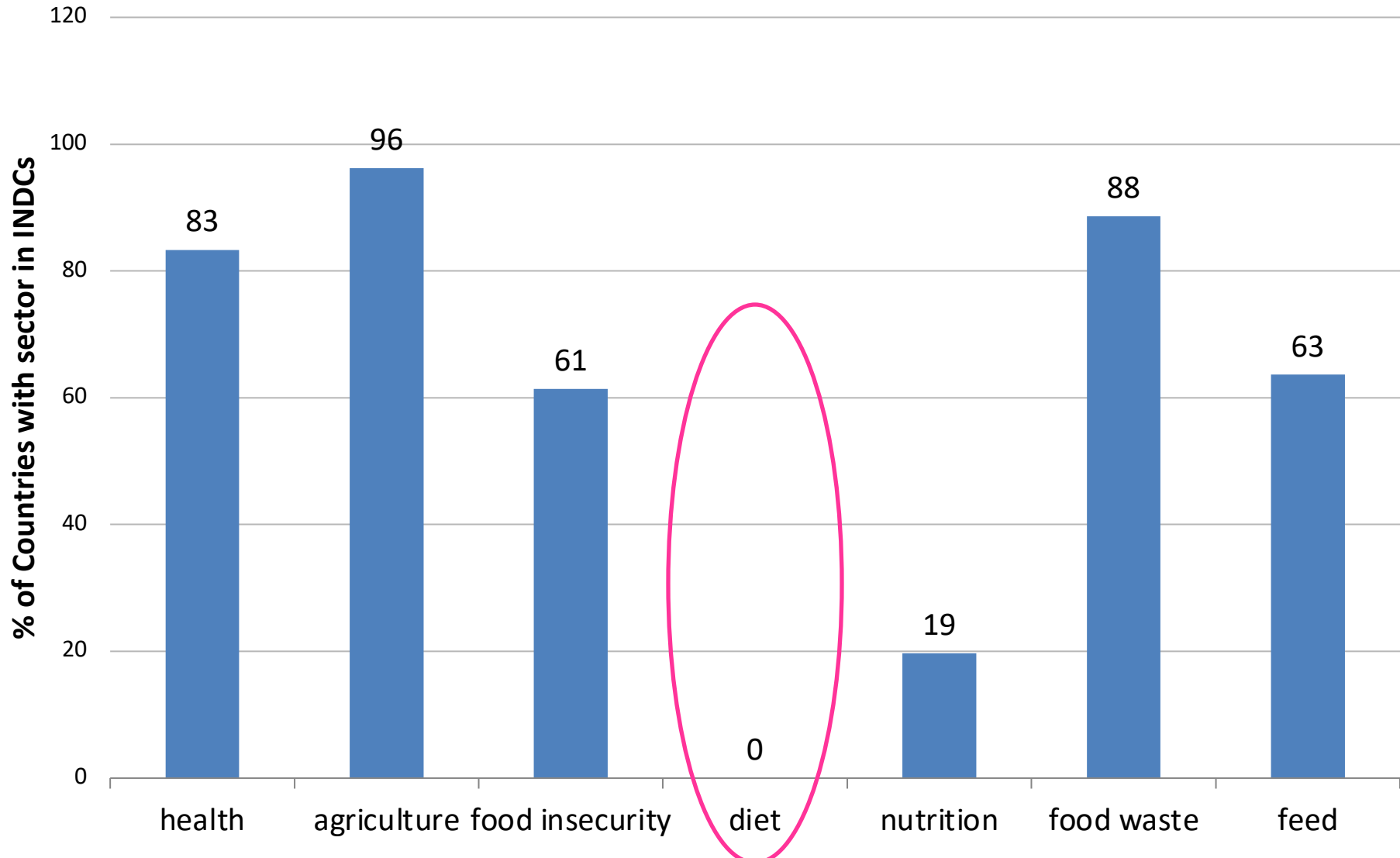
Food & Diet at NDCs

National Determined Contributions



United Nations
Framework Convention
Climate Change

Tirado, Dillon, Hart, 2019





UNSCN

United Nations System Standing Committee on Nutrition

Sustainable Diets for Healthy People and a Healthy Planet

A transition to more plant-based diets leads to lower GHG emissions and reductions in diet-related NCDs

Food-based

WHO & Int'l dietary guidelines sustainability criteria key to change dietary patterns towards sustainable diets

Nutrition & Food procurement in national processes under UNFCCC such as NAPs, and NDCs

Prevention of malnutrition and diet-related NCDs across the life cycle requires

➤ RADICAL Food system transformation - affordable sustainable & healthy diets for all



Sustainable City Plan

City of Santa Monica

Indicators	Targets for 2020
<p>Urban Runoff Reduction</p> <ul style="list-style-type: none"> • Effective impervious area • Total acreage treated • Gallons polluted runoff treated 	<p>Urban Runoff Reduction</p> <ul style="list-style-type: none"> • Annual reduction • Annual increase • Annual increase
<p>Fresh, Local, Organic Produce</p> <ul style="list-style-type: none"> • Percent of fresh, local, organic produce served at city facilities • Percent fresh, local, organic produce served at community institutions: (SMMUSD, SMC, Hospitals) • Sustainable food commitment 	<p>Fresh, Local, Organic Produce</p> <ul style="list-style-type: none"> • 15% of total • 15% of total • 100% of City food purchases comply with Santa Monica Sustainable Food Commitment
<p>Farmers Markets</p> <ul style="list-style-type: none"> • Total sales • Percent organic • Percent low chemical • Percent conventional 	<p>Farmers Markets</p> <ul style="list-style-type: none"> • Annual increase • Annual increase • Annual increase • No target
<p>Food Choices</p> <ul style="list-style-type: none"> • Residential reduction in meat and dairy consumption 	<p>Food Choices</p> <ul style="list-style-type: none"> • 15% reduction
<p>Community Gardens</p> <ul style="list-style-type: none"> • Number of people participating • Average wait time for plot • Number of gardens connected 	<p>Community Gardens</p> <ul style="list-style-type: none"> • Tracking number of people • Annual decrease • Annual increase

***Joined-up Urban Climate Governance
Best Practices in Mediterranean Climate Cities***



Sciences Po international university
Australian National University School of Regulation and Global
Governance

Case studies in LA - Barcelona -Cape Town

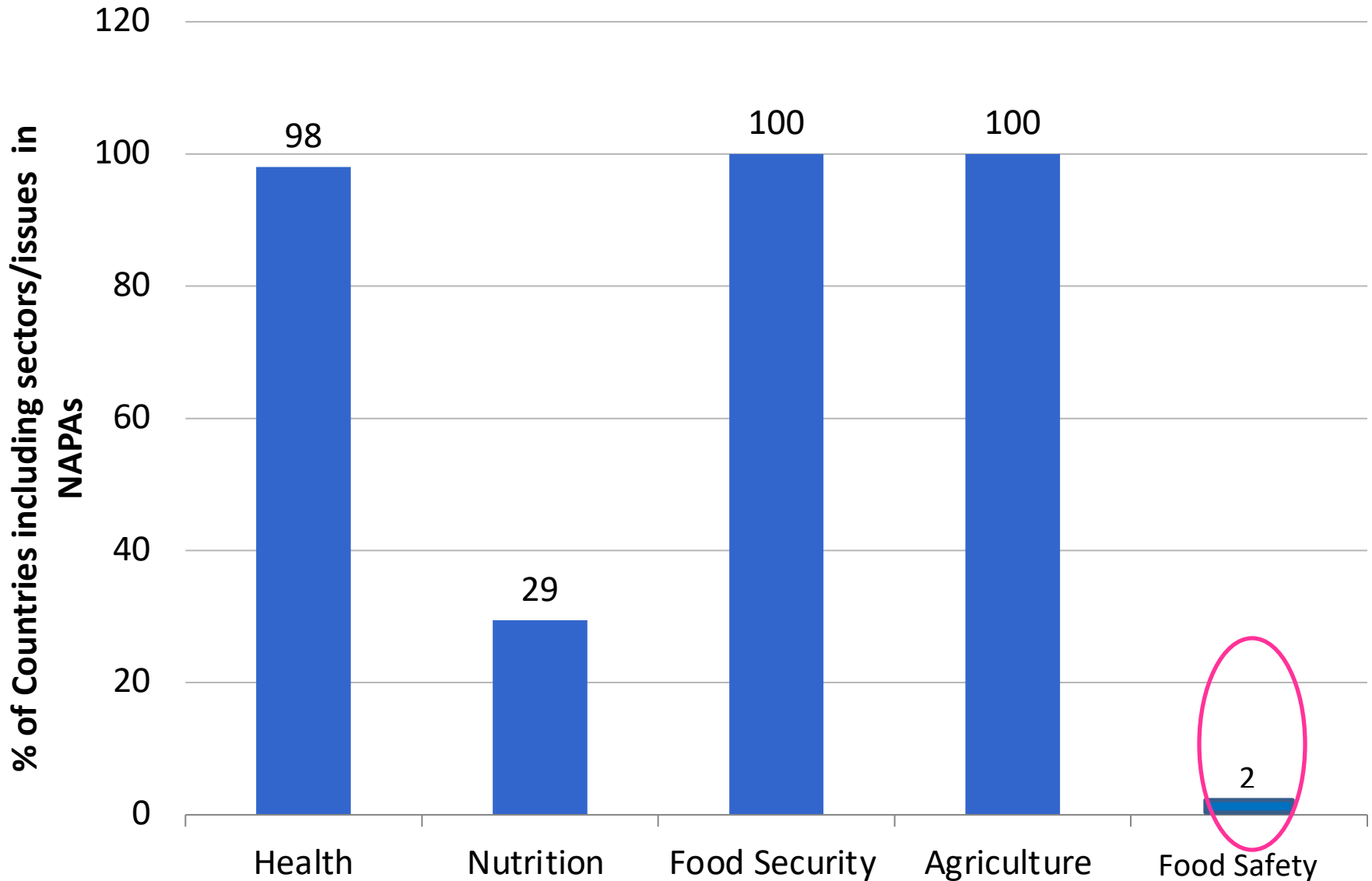
How CLEFSA has been useful to
your activities?

National Adaptation Programme of Action (NAP)



United Nations
Framework Convention
Climate Change

Tirado, Dillon, Hart, 2019



The Intergovernmental Panel on Climate Change

The Intergovernmental Panel on Climate Change (IPCC) is the United Nations body for assessing the science related to climate change.

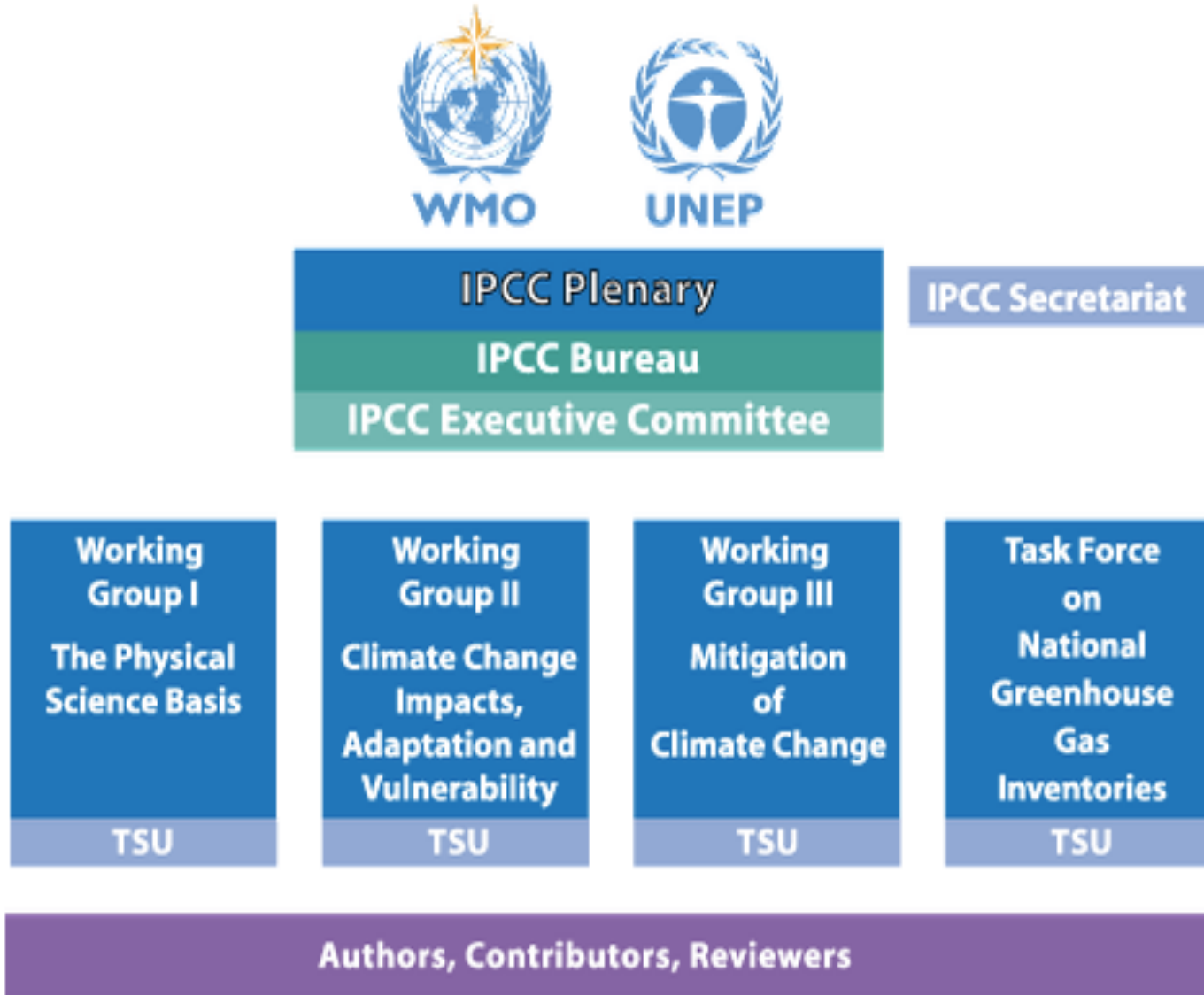
[PREVIOUS WEBSITE](#)

[SIXTH ASSESSMENT REPORT](#)



IPCC

(Intergovernmental Panel on Climate Change)



Potential Synergies with other initiatives

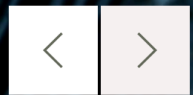
Intergovernmental Science-Policy Platform on Biodiversity and Ecosystem Services



YouTube Facebook Twitter LinkedIn Instagram | Log in | Search

[HOME](#) [ABOUT](#) [DONORS](#) [WORK PROGRAMME](#) [NEWS](#) [CALENDAR](#) [DOCUMENTS](#) [RESOURCES](#)

First external review of the IPBES assessment of invasive alien species now live!

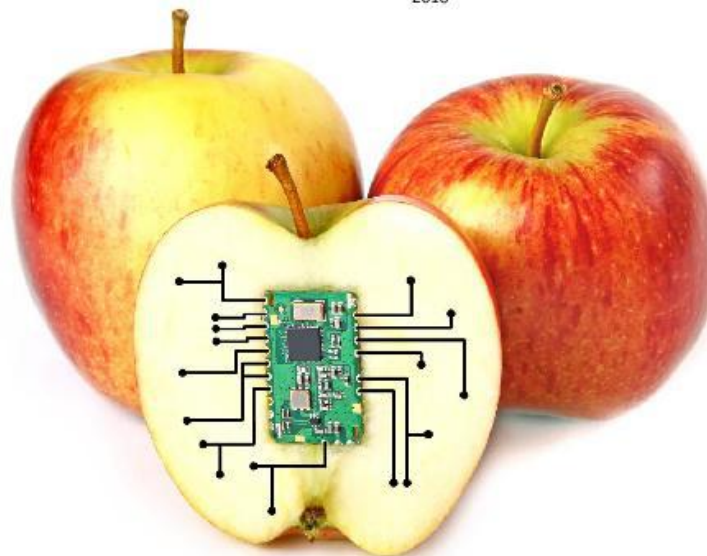


JRC SCIENCE FOR POLICY REPORT

Delivering on EU Food Safety and Nutrition in 2050 – Future challenges and policy preparedness

Kalliopi Mylona, Petros Maragkoudakis, Anne-Katrin Bock,
Jan Wollgast, Sandra Caldeira, Franz Ulberth

2016



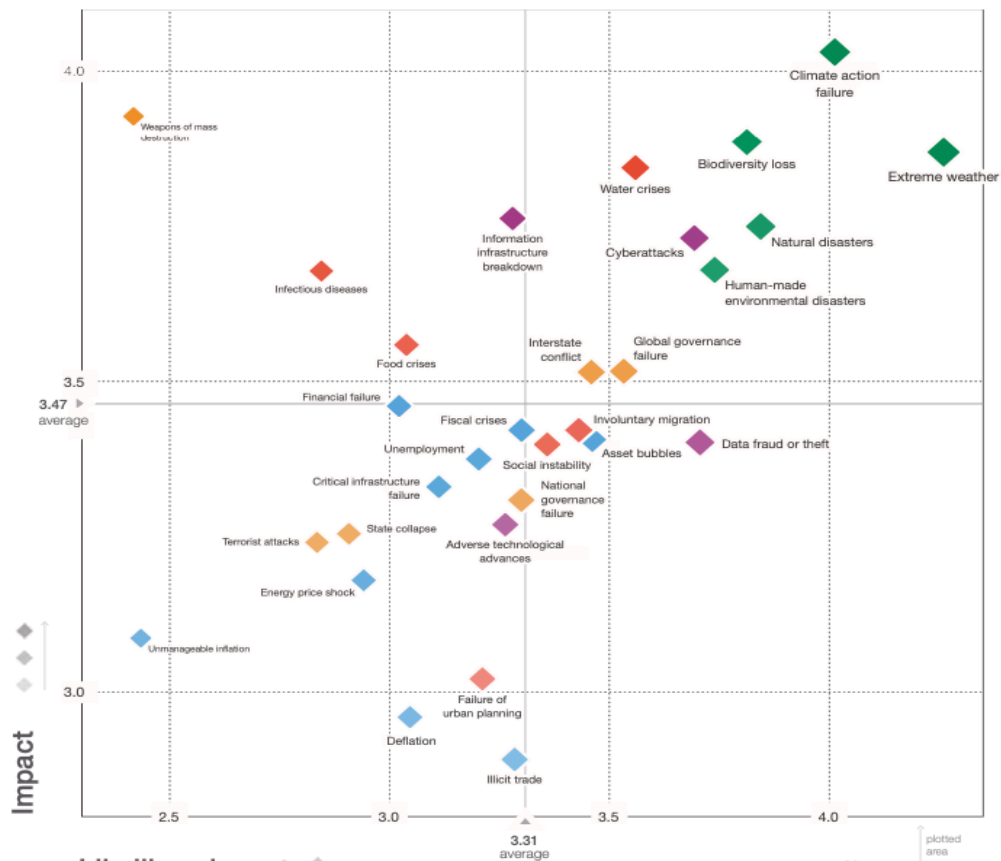
The Global Risks Report 2020

WORLD ECONOMIC FORUM

Insight Report | 15th Edition

In partnership with Marsh & McLennan and Zurich Insurance Group

Figure II: The Global Risks Landscape 2020



Likelihood

Top 10 risks in terms of Likelihood

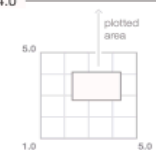
- 1 Extreme weather
- 2 Climate action failure
- 3 Natural disasters
- 4 Biodiversity loss
- 5 Human-made environmental disasters
- 6 Data fraud or theft
- 7 Cyberattacks
- 8 Water crises
- 9 Global governance failure
- 10 Unmanageable inflation

Top 10 risks in terms of Impact

- 1 Climate action failure
- 2 Weapons of mass destruction
- 3 Biodiversity loss
- 4 Extreme weather
- 5 Water crises
- 6 Information infrastructure breakdown
- 7 Natural disasters
- 8 Cyberattacks
- 9 Human-made environmental disasters
- 10 Failure of urban planning

Categories

- Blue diamond: Economic
- Green diamond: Environmental
- Orange diamond: Geopolitical
- Red diamond: Societal
- Purple diamond: Technological



Opportunities to inform climate and food adaptation



**UN CLIMATE
CHANGE
CONFERENCE
UK 2021**

IN PARTNERSHIP WITH ITALY



UN Food Systems Summit 2021 

@FoodSystems

Thank you!