



Living with Xylella

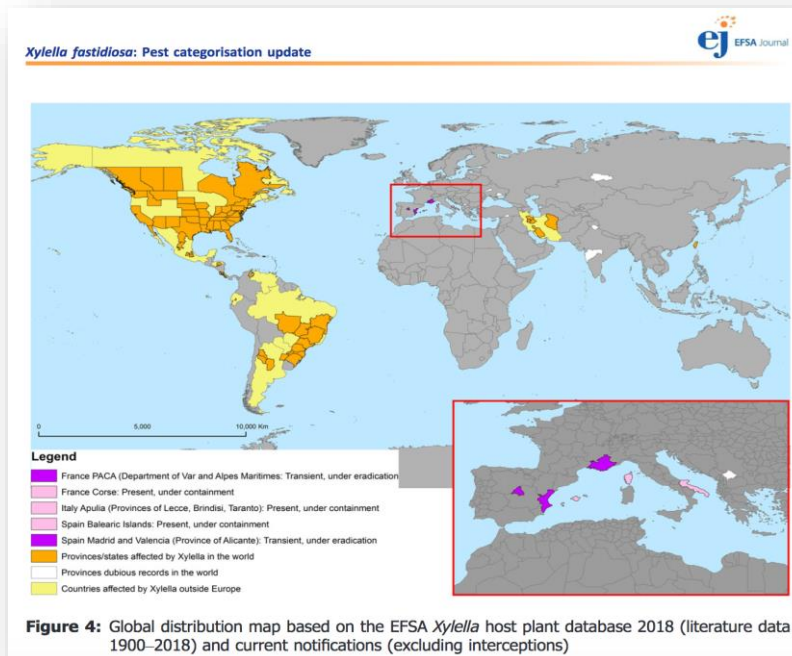
The dynamics of knowledge within *X. fastidiosa* “sociopathosystems” in Puglia and Corsica

Christian Colella - University of Milano-Bicocca (IT)

Fiona Panziera - INRA (FR)

François Charrier - INRA (FR)

Introduction





Research Questions

- What could be the **benefit of comparing the emergence of the same epiphytias in different both biotic and social contexts?**

The issue: how to introduce social studies of science/knowledge among the scientific accounts of the Xf emergence?

The classical commitment of social sciences in risk research:

- Impact and risk assessment of measures; Acceptability of measures; Communication

But the emergence of diseases is also framed, constrained, conditioned by social factors from the early beginning of outbreaks (resistance, practices, judicialisation, regulation, balance of power) and decision makers and outbreaks managers are making arrangement with all these

How to be involved in the understanding of emergence and what for?

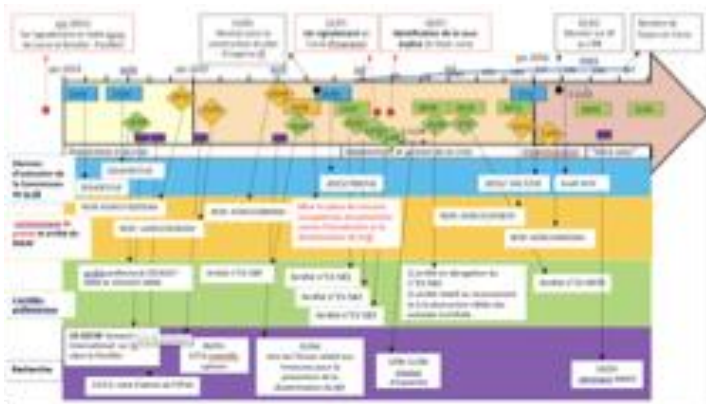
Methods and Frames





Materials and methods

- Participant Observation in Conferences, Seminars, Events
- In-Depth Interviews to Experts, Stakeholders, representatives, Social movements' members
- Management settings analysis
- Analytic Thick Chronology based on events and documents



Scientific outcomes

* Scientific publications

- **Colella et al.** (2019) Problem Setting and Problem Solving in the Case of Olive Quick Decline Syndrome in Apulia, Italy: A Sociological Approach.
- **Panziera** (2020) *A socio-anthropology of woes to explore plants status.*
- **Charrier et al.** (2020). *Make the unmanageable manageable by the collective transformation of the management situation.*

* Contribution to research project strategy and participatory approach into them

* Contribution to Scientific Expert Committee in (Corsica)



The ways-of-being of social phenomena triggered by Xf



-> Political and Juridical

-> Building frontiers



Procura della Repubblica di Lecce

Proc. Penale N. 10497/2015 RGNR

DECRETO DI SEQUESTRO PREVENTIVO D'URGENZA
- artt. 321 e segg. c.p.p. -

Il Pubblico Ministero Dott.ssa Elsa Valeria MIGNONE e dott.ssa Roberta Licci

Visti gli atti del procedimento penale n. 10497/15, già iscritto nel reg. mod. 44 nei confronti di ignoti in data 08.04.2014, con il n. 3011/2014:



Corse infos

corse-matin
Samedi 23 janvier 2016

Xylella: "La situation n'a rien de rassurant"

Corse infos

corse-matin 6

Xylella : les oléiculteurs exigent un verrouillage absolu

Corse infos

corse-matin 7

Le collectif Xylella Fastidiosa demande le blocus de l'île

Santé: la Corse en proie aux attaques extérieures

Publié le lundi 08 septembre 2014 à 07h07 - 1

-> People and groups facing the threat

Plusieurs oliviers ont été contaminés sur la Côte d'Azur... Ce qu'il faut savoir sur la bactérie Xylella Fastidiosa



Paul Hiron, un ingénieur spécialiste en arboriculture dans le jardin de Camille, dort un été perché de la bactérie. Photo: Olyan Media



L'innesto della speranza Bové: "Indispensabile blocco francese su Xylella"

0 22 Giugno 2015 - 14:30 admin Cronaca 0 749



-> Making sense with woes



URANIA

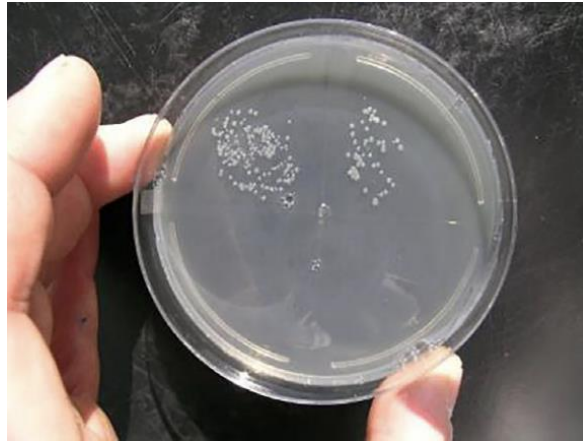
XYLELLA:
DOVE TUTTO E' POSSIBILE

AUTORI VARI



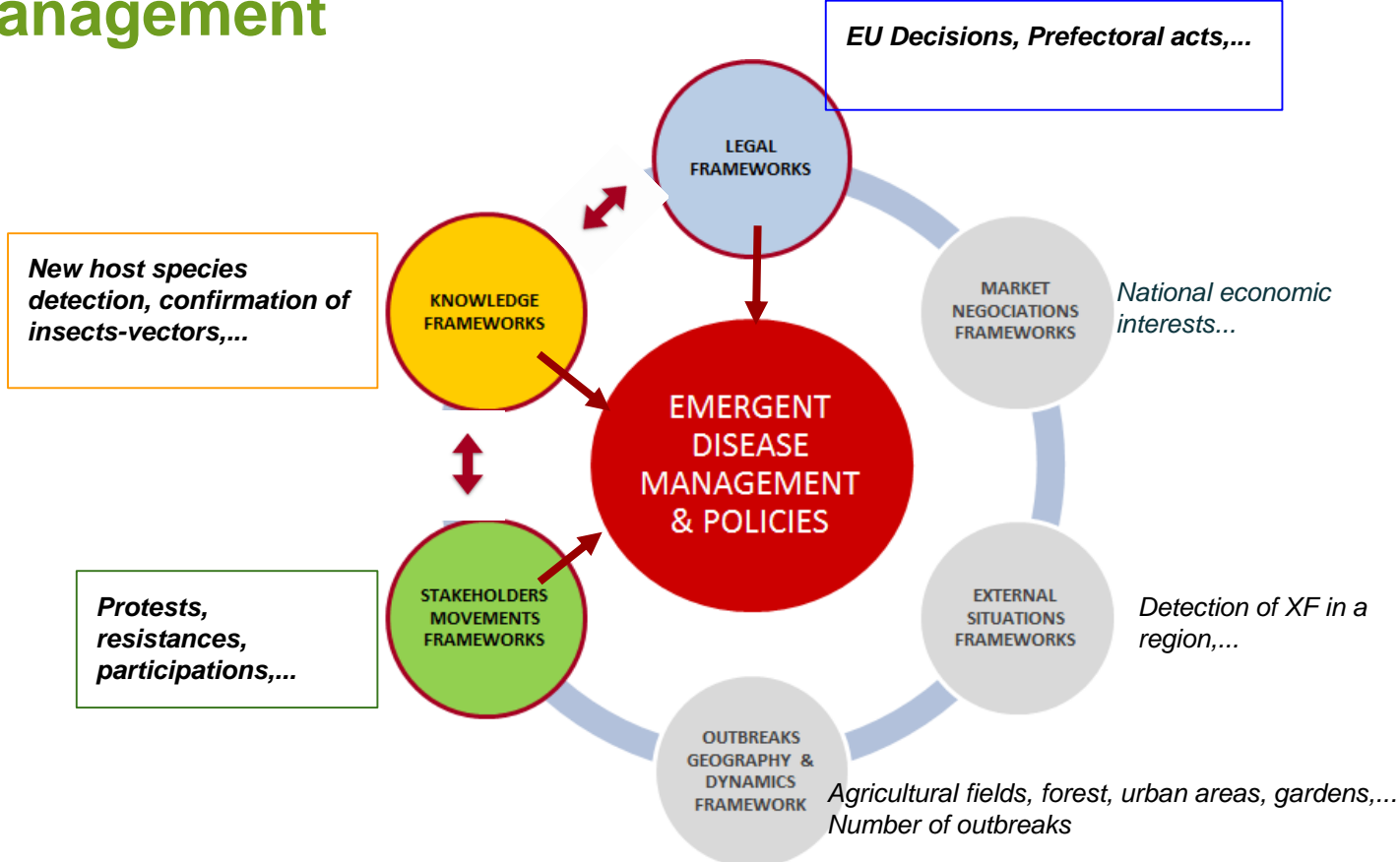
QUATTORDICINALE
lire 800

Results





Frame : The multi-dimensionality of frames for management





Comparative framework; three analytical layers

- **Legal/regulation layer:**

- How Xf is framed in official texts & discourses and how it drives strategic management settings

Ex: EU Decision based on plant hosts lists

- **Knowledge production layer:**

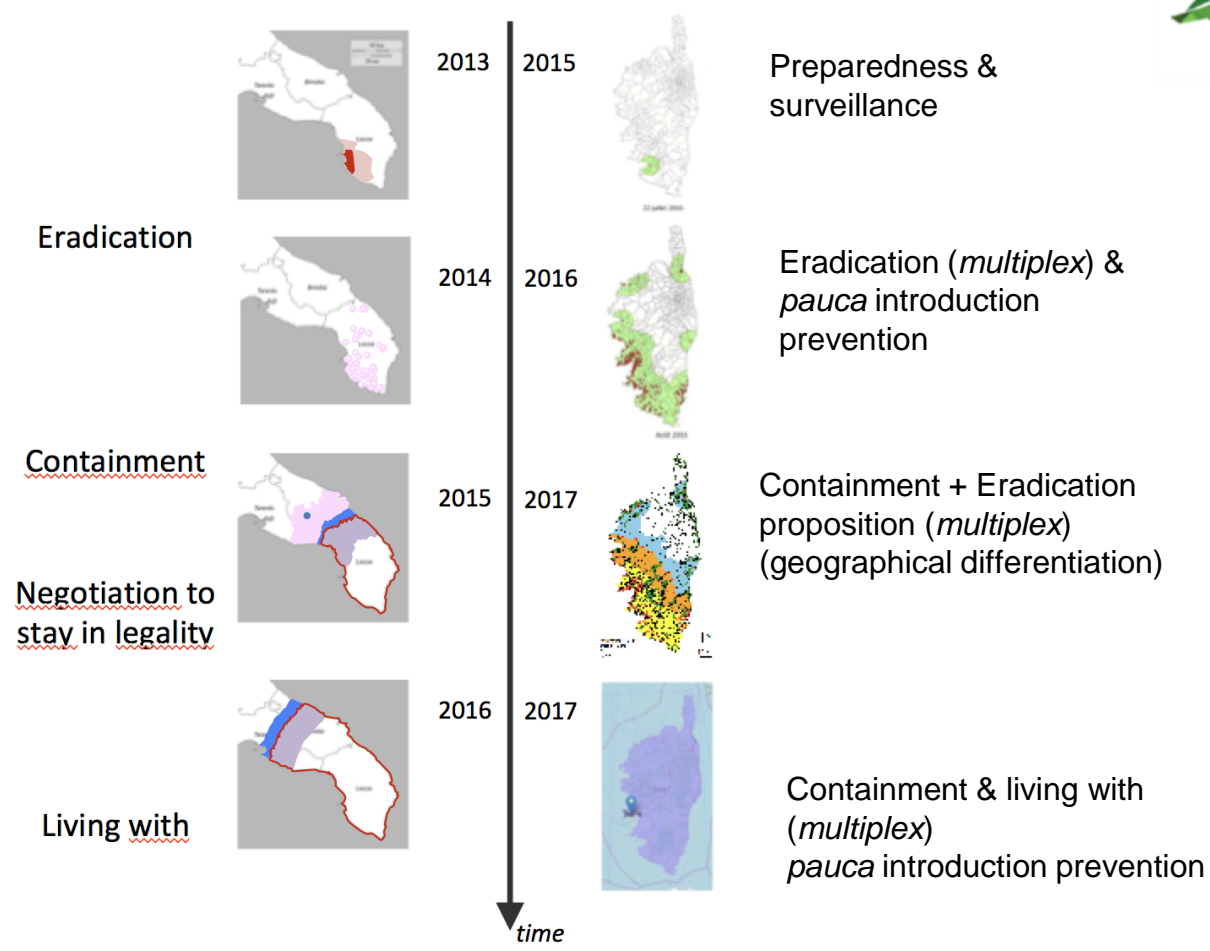
- how progressive knowledge production (scientific or operational knowledge) produces different frames that modify operational management settings

*Ex: detection of a new plant host, detection of infected *P. spumarius**

- **Stakeholders' responses & movements layer:**

- how do management settings evolve when confronting with local configurations?

Ex: trust in authorities, trust in scientific protocols,...





Preparedness strategy
Prevention of XF introduction strategy

2015

Knowledge based on overseas situations (Italy)
Oct 2014: international symp. in Puglia

04/14: locals in Puglia

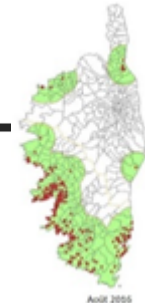
04/14: Anti-XF Collective (XFC)

Regional elections

23/07/2014: 1 list of hosts & specified +technical procedures / obligations

28/04/2014 - Definition of surveillance & management measures

30/04/2015: Prefectoral act prohibiting importations



Eradication strategy (multiplex)
Prevention of XF pauca introduction strategy

2016

Identification multiplex on polygala

Polygala Hyp: vertical contamination

Controversies on XF detection method tested at INRA vs official method → controversy on a « pauca » Holm oak

17/12/2015 EU Decision : different lists of hosts according to XF subspecies

25/09/2015 Prefectoral act (eradication of polygala)

Derogations for plant importations
Authorization to sell stocks of host & specified hosts

09/15: plant nurseries defense committee (DC)

Opposition between XFC and DC on derogation regime on importations

Nb of species = increase of the nb of stakeholders being concerned (essential oil, citrus production, INRA genetic resource facility...)

Partial containment strategy (multiplex)
Prevention of XF pauca introduction strategy

2017

Confirmation on insects vectoring XF

March 2016: Anses symp « no epiphyty »

Xf in Majorca

Opposition between XFC and DC on derogation regime on importations

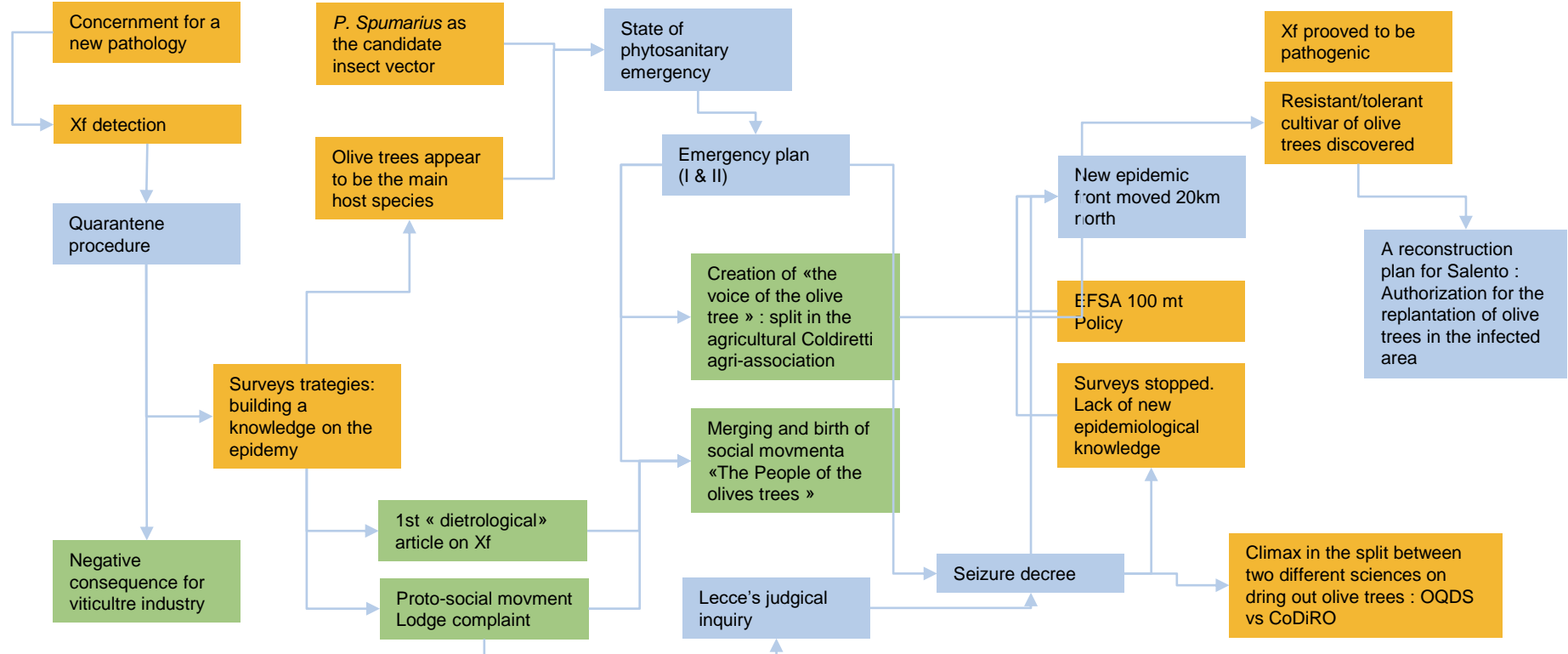
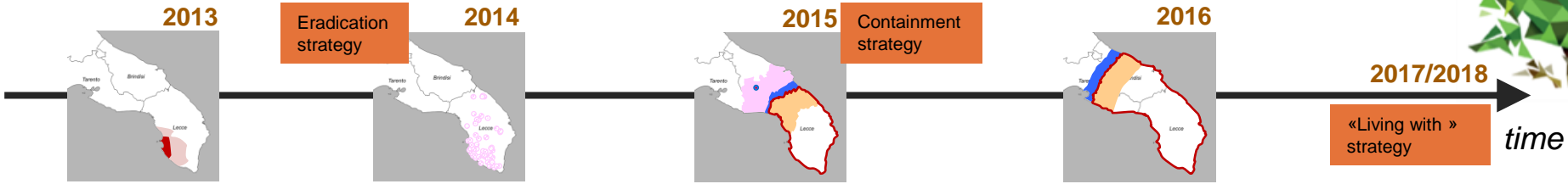
Nb of outbreaks vs resources



Feb 2016 : Audit UE

Proposition of a new zoning to EU



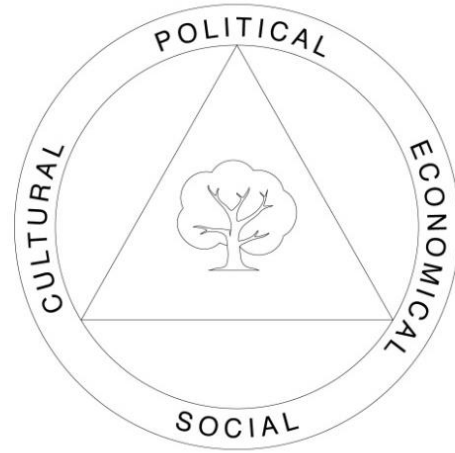
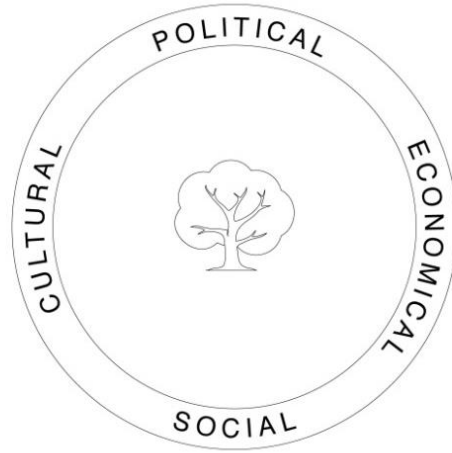
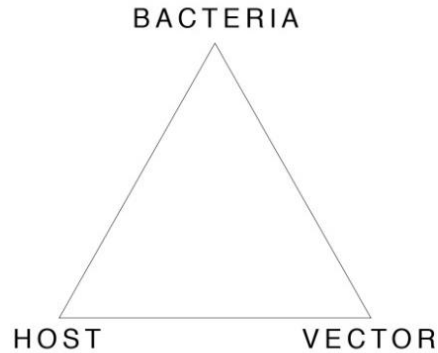


CONCLUSION





How social science can empower solutions for research in action under pressures? **A sociopathosystem approach**






How social science can empower solutions for research in action under pressures: **Multi-disciplinary convergence**

Tropical Plant Pathology
<https://doi.org/10.1007/s40858-019-00300-4>

LETTER TO THE EDITOR

Breaking down barriers between remote sensing and plant pathology

René H. J. Heim¹  • Angus J. Carnegie² • Pablo J. Zarco-Tejada^{3,4}

Received: 3 May 2019 / Accepted: 3 July 2019
© Sociedade Brasileira de Fitopatologia 2019

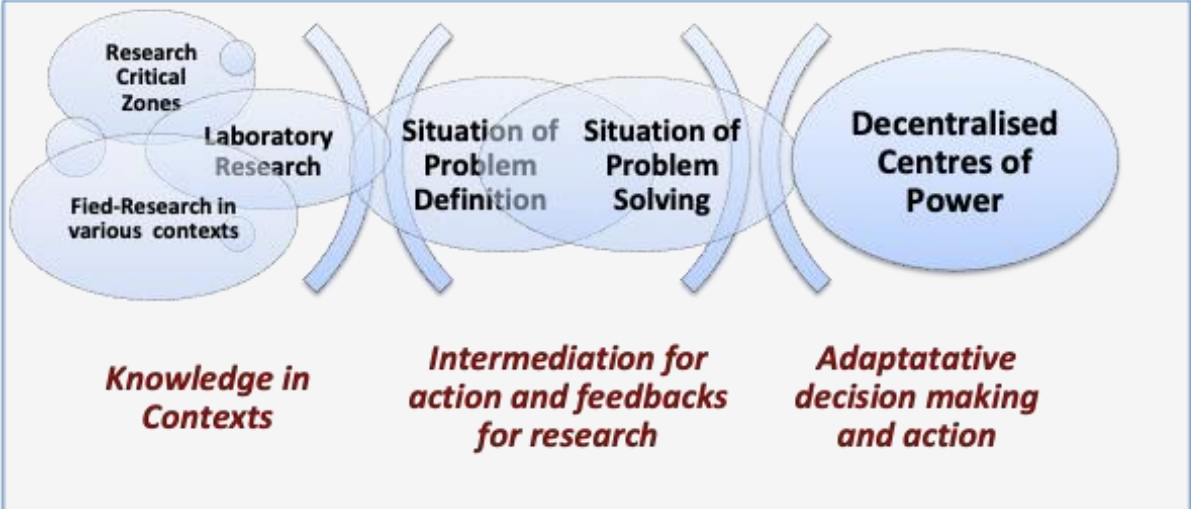
*«To foster continued research (**goal 1**) we suggest tackling the complex challenges faced by remote sensing experts and plant pathologists by promoting an open and transparent culture of collaboration and communication, which will potentially lead to advances in stress-detection systems (**goal 2**) across temporal and spatial scales. In order to make the interdisciplinary research readily and widely (**goal 3**), we must build trust and cultivate a culture of transparency and openness as this is a fundamental principle of science.» (Heim et al. 2019)*



How social science can empower solutions for research in action under pressures. **Rethinking Sciences in Action**



Experts Committees



Distributed and distributive scientific expertise

Acknowledgements

- Andrea Cerroni, Roberto Carradore, collettivoepidemia.org,
- François Casabianca (INRA), Marie-agnès Jacques (INRA), Julia Porrini (INRA)
- Laetitia Hugot (CNBC), Thomas Pouchet (MNHN)
- Sarah Brunel (FAO) & Anna Maria d'Onghia (CIHEAM)