



# **ANNUAL ACCOUNTS**

# **EUROPEAN FOOD SAFETY AUTHORITY**

**Financial Year 2019**

**Financial Statements**

**Reports on the Implementation of the Budget**

## **Certification of the 2019 Annual Accounts**

I acknowledge my responsibility for the preparation and presentation of the annual accounts of European Food Safety Authority in accordance with Article 102 of the Framework Financial Regulation ('FFR')<sup>1</sup> and I hereby certify that the annual accounts of the European Food Safety Authority for the year 2019 have been prepared in accordance with Title IX of the FFR and the accounting rules adopted by the Commission's Accounting Officer, as are to be applied by all the institutions and union bodies.

I have obtained from the Authorising Officer, who certified its reliability, all the information necessary for the production of the accounts that show the European Food Safety Authority's assets and liabilities and the budgetary implementation. Based on this information, and on such checks as I deemed necessary to sign off the accounts, I have a reasonable assurance that the accounts present fairly, in all material aspects, the financial position, the results of the operations and the cash-flow of the European Food Safety Authority.

[signed]  
Pedro Pinhal  
Accounting Officer

Parma, 12 May 2020

---

<sup>1</sup> COMMISSION DELEGATED REGULATION (EU) 2019/715 of 18 December 2018 on the framework financial regulation for the bodies set up under the TFEU and Euratom Treaty and referred to in Article 70 of Regulation (EU, Euratom) 2018/1046 of the European Parliament and of the Council.

## Table of Contents

INTRODUCTION.....	4
LEGAL BASIS .....	4
FINANCIAL STATEMENTS .....	5
BALANCE SHEET .....	5
STATEMENT OF FINANCIAL PERFORMANCE .....	6
CASH FLOW STATEMENT .....	7
STATEMENT OF CHANGES IN NET ASSETS.....	8
NOTES TO THE FINANCIAL STATEMENTS .....	9
1.    SIGNIFICANT ACCOUNTING POLICIES .....	9
2.    NOTES TO THE BALANCE SHEET .....	12
3.    NOTES TO THE STATEMENT OF FINANCIAL PERFORMANCE .....	19
4.    CONTINGENT ASSETS/LIABILITIES AND OTHER SIGNIFICANT DISCLOSURES	22
5.    PROTECTION OF THE EU BODY'S BUDGET .....	24
6.    FINANCIAL INSTRUMENTS AND RISK MANAGEMENT POLICIES.....	25
7.    CHANGES IN ACCOUNTING POLICIES.....	27
8.    RELATED PARTY DISCLOSURE.....	28
9.    EVENTS AFTER THE BALANCE SHEET DATE.....	28
REPORTS ON IMPLEMENTATION OF THE BUDGET .....	29
BUDGETARY STRUCTURE AND PRINCIPLES .....	30
BUDGET RESULT .....	32
RECONCILIATION OF ECONOMIC RESULT WITH BUDGET RESULT .....	33
BUDGET IMPLEMENTATION .....	35
BUDGET TRANSFERS.....	42
EFSA'S ORGANISATIONAL CHART (December 2019) .....	44
ESTABLISHMENT PLAN 2019 & FILLED POSTS.....	45

# INTRODUCTION

The European Food Safety Authority (“EFSA” or “the Authority”) is an independent EU Authority established by Regulation (EC) n° 178/2002 of the European Parliament and of the Council of 28 January 2002 and although financed by the general budget of the EU, it operates separately from the European Commission, European Parliament and EU Member States. EFSA’s role is to assess and communicate on all risks associated with the food chain.

EFSA is represented by its Executive Director, Dr. Bernhard Url, appointed by the Authority Management Board. EFSA’s headquarters are in Parma, Italy.

More information on the Authority administrative and operational activities, organizational chart, applicable legislation, Management Board is available on the web site: [www.efsa.europa.eu](http://www.efsa.europa.eu).

The 2019 Annual Accounts cover the period 1<sup>st</sup> January to 31<sup>st</sup> December 2019.

## LEGAL BASIS

The EFSA Annual Accounts have been established in accordance with the following legislation:

- Financial Regulation of EFSA as adopted by its Management Board on 19 June 2019;
- EC Financial Regulation;
- Accounting rules, methods and guidelines as adopted and provided by the Accounting Officer of the Commission.

# FINANCIAL STATEMENTS

## BALANCE SHEET

EUR

ASSETS	Note	2019	2018
<b>NON-CURRENT ASSETS</b>			
<b>Intangible assets</b>	2.1.		
Computer software		2,743,727.96	2,281,521.69
Intangible assets under construction		639,870.51	1,980,925.77
<b>Property, Plant and Equipment</b>	2.2.		
Land and buildings		27,627,968.25	28,751,037.08
Plant and equipment		168,411.28	185,436.39
Computer hardware		1,181,836.17	848,870.86
Furniture		425,990.82	404,030.63
<b>Long term receivables</b>		0.00	0.00
<b>Long term pre-financing</b>	2.3.	500,150.39	798,797.20
<b>TOTAL NON CURRENT ASSETS</b>		<b>33,287,955.38</b>	<b>35,250,619.62</b>
<b>CURRENT ASSETS</b>			
<b>Receivables and recoverables</b>	2.4.		
Current receivables		48,821.00	23,821.00
Accrued income		0.00	0.00
Sundry receivables		18,138.29	5,722.38
Prepaid expenses		2,092,371.69	2,231,943.61
<b>Short term pre-financing</b>	2.5.	928,718.74	1,739,161.89
<b>Cash and cash equivalents</b>	2.6.	8,307,808.84	7,624,178.34
<b>TOTAL CURRENT ASSETS</b>		<b>11,395,858.56</b>	<b>11,624,827.22</b>
<b>TOTAL ASSETS</b>		<b>44,683,813.94</b>	<b>46,875,446.84</b>
<b>NET ASSETS AND LIABILITIES</b>			
<b>NET ASSETS</b>			
<b>Accumulated surplus/deficit</b>		17,142,385.88	16,168,405.22
<b>Economic result of the year</b>		-2,355,048.85	973,980.66
<b>TOTAL NET ASSETS</b>		<b>14,787,337.03</b>	<b>17,142,385.88</b>
<b>NON-CURRENT LIABILITIES</b>			
<b>Long-term liabilities</b>	2.7.	20,500,652.47	21,920,884.43
<b>TOTAL NON CURRENT LIABILITIES</b>		<b>20,500,652.47</b>	<b>21,920,884.43</b>
<b>CURRENT LIABILITIES</b>			
<b>Provisions for risks and liabilities</b>	2.8.	49,429.95	81,929.95
<b>Payables</b>	2.9.		
Current payables		1,641,786.78	1,855,471.73
Long-term liabilities falling due within the year		942,352.10	930,545.37
Sundry payables		3,297.15	20,456.34
Accrued charges and deferred income	2.10.	5,687,644.16	4,362,565.80
Pre-financing received from consolidated EU entities	2.11.	1,071,314.30	561,207.34
<b>TOTAL CURRENT LIABILITIES</b>		<b>9,395,824.44</b>	<b>7,812,176.53</b>
<b>TOTAL NET ASSETS AND LIABILITIES</b>		<b>44,683,813.94</b>	<b>46,875,446.84</b>

## STATEMENT OF FINANCIAL PERFORMANCE

EUR

	Note	2019	2018
<b>OPERATING REVENUE</b>	3.1.		
European Union Contribution	3.1.1.	79,050,870.39	79,762,849.15
Other operating revenue	3.1.2.	76,061.77	43,031.24
Revenue from EU entities		408,409.67	266,399.87
<b>TOTAL OPERATING REVENUE</b>		<b>79,535,341.83</b>	<b>80,072,280.26</b>
<b>OPERATING EXPENSES</b>			
Administrative expenses	3.2.		
Staff expenses		-39,826,997.45	-38,348,326.14
Other administrative expenses		-9,487,298.74	-9,157,456.24
Depreciation & amortisation of fixed assets		-3,364,784.24	-2,968,377.19
Administrative expenses with EU entities		-2,104,783.08	-2,011,588.39
Operating expenses	3.3.		
Operating expenses		-25,599,979.86	-25,480,596.31
Operating expenses with EU entities		-754,781.44	-329,979.48
<b>TOTAL OPERATING EXPENSES</b>		<b>-81,138,624.81</b>	<b>-78,296,323.75</b>
<b>SURPLUS/(DEFICIT) FROM OPERATING ACTIVITIES</b>		<b>-1,603,282.98</b>	<b>1,775,956.51</b>
Financial revenues	3.4.	32,651.44	35,916.85
Financial expenses	3.5.	-784,417.31	-837,892.70
<b>SURPLUS/(DEFICIT) FROM ORDINARY ACTIVITIES</b>		<b>-2,355,048.85</b>	<b>973,980.66</b>
Extraordinary gains		0.00	0.00
Extraordinary losses		0.00	0.00
<b>SURPLUS/(DEFICIT) FROM EXTRAORDINARY ITEMS</b>		<b>0.00</b>	<b>0.00</b>
<b>ECONOMIC RESULT OF THE YEAR</b>		<b>-2,355,048.85</b>	<b>973,980.66</b>

## CASH FLOW STATEMENT

EUR

	2019	2018
Economic result of the year	-2,355,048.85	973,980.66
<b>Operating activities</b>		
Amortisation	1,057,752.38	657,389.34
Depreciation	2,281,987.17	2,307,485.06
(Increase)/Decrease in long term receivables and recoverables	102,156.01	-226,193.87
(Increase)/Decrease in long term pre-financing	298,646.181	927,511.18
(Increase)/Decrease in short term pre-financing	810,443.15	-537,666.65
(Increase)/Decrease in provisions	-32,500.00	25,000.00
(Increase)/Decrease in receivables from consolidated EU entities	0.00	0.00
(Increase)/Decrease in liabilities	-1,420,231.96	-1,535,772.78
(Increase)/Decrease in payables	1,106,040.95	-658,046.46
(Increase)/Decrease in liabilities to consolidated EU entities	510,106.96	-83,606.60
(Gains)/losses on sale of property, plant and equipment	0.00	0.00
Other non-cash movements	0.00	0.00
<b>Net cash-flow from operating activities</b>	<b>2,359,352.62</b>	<b>1,850,079.88</b>
<b>Investing activities</b>		
(Increase)/Decrease in intangible assets and property, plant and equipment	-1,700,766.81	-1,438,518.98
Proceeds from intangible assets and property, plant and equipment	25,044.69	3,502.79
<b>Net cash-flow from investing activities</b>	<b>-1,675,722.12</b>	<b>-1,435,016.19</b>
Net increase/(decrease) in cash and cash equivalents	683,630.50	415,063.69
Cash and cash equivalents at the beginning of the year	7,624,178.34	7,209,114.65
<b>Cash and cash equivalents at year-end</b>	<b>8,307,808.84</b>	<b>7,624,178.34</b>

## STATEMENT OF CHANGES IN NET ASSETS

EUR

	Note	Accumulated Surplus/Deficit	Economic result of the year	Net Assets (Total)
<b>Balance as at 31 December 2018</b>		16,168,405.22	973,980.66	17,142,385.88
Changes in accounting policies				
<b>Balance as at 1 January 2019</b>		16,168,405.22	973,980.66	17,142,385.88
Allocation of the economic result of previous year		973,980.66	-973,980.66	
Economic result of the year			-2,355,048.85	-2,355,048.85
<b>Balance as at 31 December 2019</b>		17,142,385.88	-2,355,048.85	14,787,337.03



# NOTES TO THE FINANCIAL STATEMENTS

## 1.1.2019 – 31.12.2019

### 1. SIGNIFICANT ACCOUNTING POLICIES

#### 1.1. Legal basis and Accounting rules

In accordance with Article 97 of the Financial Regulation of the European Food Safety Authority, the following annual accounts together with the reports on implementation of the budget of European Food Safety Authority have been drawn up.

These financial statements are prepared on the basis of the EU Accounting Rules as adopted by the Commission's Accounting Officer which adapt the International Public Sector Accounting Standards (and in some cases the International Financial Reporting Standards) to the specific environment of the EU, while the reports on implementation of the budget continue to be primarily based on movements of cash.

The accounting system of the European Food Safety Authority comprises general accounts and budget accounts. These accounts are kept in Euro on the basis of the calendar year. The budget accounts give a detailed picture of the implementation of the budget. They are based on the modified cash accounting principle.<sup>2</sup> The general accounts allow for the preparation of the financial statements as they show all charges and income for the financial year and are designed to establish the financial position in the form of a balance sheet as at 31 December.

The European Food Safety Authority financial statements have been drawn up using the methods of preparation as set out in the accounting rules laid down by the European Commission's Accounting Officer.

#### 1.2. Accounting principles

The objectives of the financial statements are to provide information about the financial position, performance and cash flows of an entity that is useful to a wide range of users. For a public sector entity such as the European Food Safety Authority, the objectives are more specifically to provide information useful for decision making, and to demonstrate the accountability of the entity for the resources entrusted to it.

The overall considerations (or accounting principles) to be followed when preparing the financial statements are laid down in EU Accounting rule 2 and are the same as those described in IPSAS 1, that is:

#### **Fair presentation**

Financial statements shall present fairly the financial position, financial performance and cash flows of an entity. Fair presentation requires the faithful representation of the effects of transactions, other events and conditions in accordance with the definitions and recognition criteria for assets, liabilities, revenue and expenses set out in EC accounting rules. The application of EC accounting rules, with additional disclosures when necessary, is presumed to result in financial statements that achieve a fair presentation (EU Accounting Rule 2).

---

<sup>2</sup> This differs from cash-based accounting because of elements such as carryovers.  
European Food Safety Authority – Annual Accounts 2019

## **Accrual Basis**

In order to meet their objectives, financial statements are prepared on the accrual basis of accounting. Under this basis, the effects of transactions and other events are recognised when they occur (and not as cash or its equivalent is received or paid) and they are recorded in the accounting records and reported in the financial statements of the periods to which they relate (EU Accounting Rule 2).

## **Going concern basis**

When preparing financial statements an assessment of an entity's ability to continue as a going concern shall be made. Financial statements shall be prepared on a going concern basis unless there is an intention to liquidate the entity or to cease operating, or if there is no realistic alternative but to do so. These financial statements have been prepared in accordance with the going concern principle, which means that the European Food Safety Authority is deemed to have been established for an indefinite duration (EU Accounting Rule 2).

## **Consistency of presentation**

According to this principle the presentation and classification of items in the financial statements shall be retained from one period to the next (EU Accounting Rule 2).

## **Aggregation**

Each material class of similar items shall be presented separately in the financial statements. Items of a dissimilar nature or function shall be presented separately unless they are immaterial (EU Accounting Rule 2).

## **Offsetting**

Assets and liabilities, and revenue and expenses, shall not be offset unless required or permitted by an EU Accounting rule (EU Accounting Rule 2).

## **Comparative Information**

Except when an EU accounting rule permits or requires otherwise, comparative information shall be disclosed in respect of the previous period for all amounts reported in the financial statements. When the presentation or classification of items in the financial statements is amended, comparative amounts shall be reclassified unless the reclassification is impracticable (EU Accounting Rule 2).

### **1.3. Statement of financial performance**

#### **1.3.1. Revenue**

Non-exchange revenue makes up the vast majority of EFSA revenue and includes mainly EU subsidy and own resource amounts.

Exchange revenue is the revenue from the sale of goods and services. It is recognised when the significant risk and rewards of ownership of the goods are transferred to the purchaser. Revenue associated with a transaction involving the provision of services is recognised by reference to the stage of completion of the transaction at the reporting date.

Interest income consist of received bank interest.

#### **1.3.2. Expenses**

According to the principle of accrual-based accounting, the financial statements take account of expenses relating to the reporting period, without taking into consideration the payment date; meaning when the goods or services are used or consumed.

Exchange expenses arising from the purchase of goods and services are recognised when the supplies are delivered and accepted by EFSA. They are valued at original invoice cost.

Non-exchange expenses account for the majority of EFSA's expenses. They relate to transfers to beneficiaries and can be of three types: entitlements, transfers under agreement and discretionary grants, contributions and donations.

Transfers are recognised as expenses in the period during which the events giving rise to the transfer occurred, as long as the nature of the transfer is allowed by regulation (Financial Regulation, Staff Regulations, or other regulation) or a contract has been signed authorising the transfer; any eligibility criteria have been met by the beneficiary; and a reasonable estimate of the amount can be made.

When a request for payment or cost claim is received and meets the recognition criteria, it is recognised as an expense for the eligible amount. At year-end, incurred eligible expenses due to the beneficiaries but not yet reported are estimated and recorded as accrued expenses.

## 2. NOTES TO THE BALANCE SHEET

### NON-CURRENT ASSETS

The tangible or intangible items acquired whose acquisition price or production cost is 420.00 euro or more, with a period of use greater than one year and which are not consumables, are recorded as fixed assets. Items with an acquisition price below 420.00 euro have been reflected in the accounts as running expenses.

Depreciation is the systematic allocation of the depreciable amount of an asset over its useful life (EU Accounting Rule 7).

The depreciation is calculated using the straight-line method with the following rates:

Type of asset	Rate
Computer software	25%
Furniture	25% - 10%
Plant and equipment	25% - 12.5%
Computer hardware	25%
Telecommunication and audio-visual equipment	25%
Building	4%

#### 2.1. Intangible assets

Intangible assets are identifiable non-monetary assets without physical substance. Acquired computer software licences are stated at historical cost less accumulated amortisation and impairment losses. The assets are amortised on a straight-line basis over their estimated useful lives. The estimated useful lives of intangible assets depend on their specific economic lifetime or legal lifetime determined by an agreement.

Currently, EFSA uses 25% amortisation rate for its intangible assets. Amortisation is the systematic allocation of the depreciable amount of an intangible asset over its useful life (EU Accounting Rule 6). Internally developed intangible assets are capitalised when the relevant criteria of the EU Accounting rules are met. The costs capitalisable include all directly attributable costs necessary to create, produce, and prepare the asset to be capable of operating in the manner intended by management. Costs associated with research activities, non-capitalisable development costs and maintenance costs are recognised as expenses as incurred.

The intangible fixed assets at EFSA consist of computer software and the development cost of the intangible fixed assets under construction.

	Computer Software	Internally generated Computer Software	TOTAL	Intangible fixed assets under construction	TOTAL
<b>Gross carrying amounts 01.01.2019</b>	<b>6,171,393.41</b>	<b>3,020,867.88</b>	<b>9,192,261.29</b>	<b>1,980,925.77</b>	<b>11,173,187.06</b>
Additions	158,250.55	20,652.84	178,903.39	0.00	178,903.39
Disposals	-2,118.00	0.00	-2,118.00	0.00	-2,118.00
Other changes	0.00	1,341,055.26	1,341,055.26	-1,341,055.26	0.00
<b>Gross carrying amounts 31.12.2019</b>	<b>6,327,525.96</b>	<b>4,382,575.96</b>	<b>10,710,101.94</b>	<b>639,870.51</b>	<b>11,349,972.45</b>
<b>Accumulated amortizations and impairment 01.01.2019</b>	<b>-5,938,376.01</b>	<b>-972,363.59</b>	<b>-6,910,739.60</b>	<b>0.00</b>	<b>-6,910,739.60</b>
Depreciations	-147,671.07	-910,081.31	-1,057,752.38	0.00	-1,057,752.38
Write-back (disposals)	2,118.00	0.00	2,118.00	0.00	2,118.00
Other changes	0.00	0.00	0.00	0.00	0.00
<b>Accumulated amortization and impairment 31.12.2019</b>	<b>-6,083,929.08</b>	<b>-1,882,444.90</b>	<b>-7,966,373.98</b>	<b>0.00</b>	<b>-7,966,373.98</b>
<b>Net carrying amounts 31.12.2019</b>	<b>243,596.88</b>	<b>2,500,131.08</b>	<b>2,743,727.96</b>	<b>639,870.51</b>	<b>3,383,598.47</b>

As of 31/12/2019, the following IT project have been considered as intangible fixed assets under construction, eg. software: Matrix. Matrix project development was on hold during 2019 and the cost incurred in research was 437,474.00 euro.

During 2019, Talent Management project had his remaining modules (15%) released in August 2019. An amount of 736,761.54 euro associated to this final release was capitalized. The IAM (Introduction of a framework for Information Access Management) project was finalized and released in July 2019. An amount of 624,946.56 euro associated to this released was capitalized.

Below the aggregate information breakdown of the mentioned intangible fixed assets under construction and their associated development cost as of 31/12/2019:

Name of project	Development cost under construction
<i>Matrix</i>	639,870.51
<b>Total</b>	<b>639,870.51</b>

## 2.2. Property, plant and equipment

All property, plant and equipment are stated at historical cost less accumulated depreciation and impairment losses. Historical cost includes expenditure that is directly attributable to the acquisition or construction of the asset. Subsequent costs are included in the asset's carrying amount or recognised as a separate asset, as appropriate, only when it is probable that future economic benefits or service potential associated with the item will flow to EFSA and its cost can be measured reliably. Repairs and maintenance costs are charged to the statement of financial performance during the financial period in which they are incurred.

Tangible (fixed) assets at EFSA consist mainly of the building (EFSA Seat), technical equipment, furniture, computer hardware, telecommunication and audio-visual equipment.

Land and buildings includes the amounts related to the cost of EFSA Seat delivered in December 2011. The land has been donated by the Parma Municipality to EFSA, free of charge, allowing EFSA to use the land for indefinite period of time. No accounting entries for this non-exchange component – Land.

	Land and Buildings	Plant and Equipment	Computer hardware	Furniture	TOTAL
<b>Gross carrying amounts 01.01.2019</b>	<b>39,984,177.43</b>	<b>1,055,448.12</b>	<b>7,164,557.35</b>	<b>1,443,486.54</b>	<b>49,647,669.44</b>
Additions	494,009.26	121,763.33	730,137.01	175,953.82	<b>1,521,863.42</b>
Disposals	0.00	-1,404.80	-1,137,985.61	-92,825.87	<b>-1,232,216.28</b>
Other changes	0.00	0.00	0.00	0.00	<b>0.00</b>
<b>Gross carrying amounts 31.12.2019</b>	<b>40,478,186.69</b>	<b>1,175,806.65</b>	<b>6,756,708.75</b>	<b>1,526,614.49</b>	<b>49,937,316.58</b>
<b>Accumulated depreciations and impairments 01.01.2019</b>	<b>-11,233,140.35</b>	<b>-870,011.73</b>	<b>-6,315,686.49</b>	<b>-1,039,455.91</b>	<b>-19,458,294.48</b>
Depreciations	-1,617,078.09	-138,788.44	-395,965.10	-130,155.54	<b>-2,281,987.17</b>
Write-back (disposals)	0.00	1,404.80	1,136,779.01	68,987.78	<b>1,207,171.59</b>
Other changes	0.00	0.00	0.00	0.00	<b>0.00</b>
<b>Accumulated depreciation and impairment 31.12.2019</b>	<b>-12,850,218.44</b>	<b>-1,007,395.37</b>	<b>-5,574,872.58</b>	<b>-1,100,623.67</b>	<b>-20,533,110.06</b>
<b>Net carrying amounts 31.12.2019</b>	<b>27,627,968.25</b>	<b>168,411.28</b>	<b>1,181,836.17</b>	<b>425,990.82</b>	<b>29,404,206.52</b>

### 2.3. Non-current pre-financing

Pre-financing is the equivalent of cash advances paid in the context of purchases of goods or services by EFSA and it may be split into a number of payments over a period defined in the particular pre-financing agreement. These payments are made before the goods are delivered or the services are performed and intended to provide the beneficiary with a float. If the beneficiary does not incur eligible expenditures, he has the obligation to return the pre-financing advance to EFSA. This right of EFSA is shown as an asset.

	<b>2019</b>	<b>2018</b>
Long term pre-financing	500,150.39	798,797.20
<b>Total</b>	<b>500,150.39</b>	<b>798,797.20</b>

The year end balance of 500,150.39 euro, regards pre-financing given on long term. Under EU Accounting Rules the pre-financing balances are reduced at year end to the extent that costs related to the contract execution for each individual contract have been accrued.

## CURRENT ASSETS

### 2.4. Current receivables and recoverables

	<b>2019</b>	<b>2018</b>
Current receivables	48,821.00	23,821.00
Sundry receivables	18,138.29	5,722.38
Deferred charges	2,092,371.69	2,231,943.61
<b>Total</b>	<b>2,159,330.98</b>	<b>2,261,486.99</b>

The year end balance for deferred charges of 2,092,371.69 euro consists mainly on 783,345.32 euro related to the charge of school fees for the EFSA pupils enrolled in the European School of Parma for the school year 2019/2020, 615,166.70 euro related to the maintenance of hardware/software and related subscriptions paid during 2019 financial year which will be delivered in the next financial years (2020-2023), 516,071.05 euro related a Service Level Agreement (provision of IUCLID-as-a Service for Pesticides), carried out by ECHA for EFSA.

The total receivables of 2,159,330.98 euro (2018: 2,261,486.99 euro) are relating to non-exchange transactions.

### 2.5. Current pre-financing

	<b>2019</b>	<b>2018</b>
Short term pre-financing	928,718.74	1,739,161.89
<b>Total</b>	<b>928,718.74</b>	<b>1,739,161.89</b>

The year end balance of 928,718.74 euro, regards pre-financing given on short term. Under EU Accounting Rules the pre-financing balances are reduced at year end to the extent that costs related to the contract execution for each individual contract have been accrued.

## 2.6. Cash and cash equivalents

	2019	2018
Bank accounts		
- CRP	8,051,609.31	7,606,925.09
- CIN	256,199.53	17,253.25
<b>Total</b>	<b>8,307,808.84</b>	<b>7,624,178.34</b>

The bank accounts are held with Credit Agricole.

## NON-CURRENT LIABILITIES

### 2.7. Non-current financial liabilities

	2019	2018
Other long term liabilities	20,500,652.47	21,920,884.43
<b>Total</b>	<b>20,500,652.47</b>	<b>21,920,884.43</b>

The year end balance of 20,500,652.47 euro is related to EFSA new Seat (Building) that was bought in December 2011 where the purchase price will be paid off in instalments. The amount regards the debt owed due in more than one year. On the top of the quarterly instalments paid of 930,545.37 euro during the 2019 financial year, at year end a supplementary payment of 477,879.86 euro has been done by EFSA.

## CURRENT LIABILITIES

### 2.8. Current provisions/short-term provisions for risks and liabilities

	2019	2018
Provisions	49,429.95	81,929.95
<b>Total</b>	<b>49,429.95</b>	<b>81,929.95</b>

The year balance of 49,429.95 euro regards 32,500.00 euro for probable legal costs to be paid in 2021 and 16,929.95 euro for a doubtful debt.

### 2.9. Payables

The accounts payable as at 31 December 2019 comprise outstanding unpaid invoices received and recognised at invoice reception for the original amount.

	2019	2018
Payables –suppliers/public bodies	1,641,786.78	1,855,471.73
Other short term liabilities	942,352.10	930,545.37
Sundry payables	3,297.15	20,456.34
<b>Total</b>	<b>2,587,436.03</b>	<b>2,806,473.44</b>



The year end balance of 1,641,786.78 euro, regards unpaid invoices received from suppliers/public bodies for goods and services provided to EFSA.

The amount of 942,352.10 euro, concerns EFSA debt owed within one year for the building purchase.

## 2.10. Accrued charges and deferred income

	<b>2019</b>	<b>2018</b>
Accrued charges	4,965,521.31	3,620,545.81
Untaken annual leave	697,522.30	715,803.63
Other accrued charges	24,600.55	26,216.36
<b>Total</b>	<b>5,687,644.16</b>	<b>4,362,565.80</b>

Accrued charges are expenses related to goods and services provided to EFSA during the financial year 2019 but not invoiced nor paid at year end. The calculated amount of the untaken leave of staff for 2019, is recognised as accrued expense and amounts to 697,522.30 euro. The amount of 24,600.55 euro relates to the finance charge for 2019 associated to the first instalment to be paid in 2020 for the building purchase.

## 2.11. Accounts payable to consolidated EU entities

	<b>2019</b>	<b>2018</b>
Repayable positive budgetary outturn – DG SANTE	429,374.59	442,464.27
Pre-financing received DG NEAR – 2017 contract	4,499.95	118,743.07
Pre-financing received DG NEAR – 2019 contract	637,439.76	0.00
<b>Total</b>	<b>1,071,314.30</b>	<b>561,207.34</b>

At year end of 2019 there is a surplus of the EC subsidy (DG SANTE) amounting to 429,374.59 that corresponds to the subsidy received but unused in 2019. During the course of 2020 this amount will be reimbursed to the European Commission (DG SANTE).

The year end balance of 4,499.95 euro related to DG NEAR, corresponds to the net amount between the costs incurred (315,500.05 euro) during 2017, 2018 and 2019 and the pre-financing (320,000.00 euro) received from DG NEAR in 2017 regarding the contract 2017/388-568 for “Preparatory measures for the participation of IPA beneficiaries in the European Food Safety Authority”. The DG NEAR contract 2017/388-568 started in December 2017 and was finalized in June 2019 and the consumption of the amount of 320,000.00 euro received in 2017 was the following, per year:

<b>Costs – Consumption</b>	<b>2017</b>	<b>2018</b>	<b>2019</b>	<b>Total</b>
Contrac 2017/388-568	7,405.37	193,851.56	114,243.12	<b>315,500.05</b>

The year end balance of 637,439.76 euro related to DG NEAR, corresponds to the net amount between the costs incurred (112,560.24 euro) during 2019 and the pre-financing (750,000.00 euro) received from DG NEAR in 2019 regarding the contract 2019/405-828 for "Preparatory measures for the participation of IPA beneficiaries in the European Food Safety Authority 2019-2021". The DG NEAR contract 2019/405-828 was implemented in June 2019 and will be concluded in June 2021. The consumption of the referred contract during 2019, was the following:

<b>Costs - Consumption</b>	<b>2019</b>
Contrac 2017/388-568	112,560.24

### 3. NOTES TO THE STATEMENT OF FINANCIAL PERFORMANCE

#### 3.1. Revenue

Revenues and corresponding receivables are measured at the fair value of the consideration received or receivable and are accounted for in the period to which they relate.

EFSA's main source of revenue is the subsidy of 78,824,067.03 euro received from the European Commission (DG SANTE). Besides the subsidy, EFSA has revenues from two contracts with DG NEAR, 114,243.12 euro from contract 2017/388-568 "Preparatory measures for the participation of IPA beneficiaires in the European Food Safety Authority" and 112,560.24 euro from contract 2019/405-828 "Preparatory measures for the participation of IPA beneficiaires in the European Food Safety Authority 2019-2021".

##### 3.1.1. Union contribution

	<b>2019</b>	<b>2018</b>
EC contribution – DG SANTE	78,824,067.03	79,568,997.59
Accrued income – DG NEAR 2017	114,243.12	193,851.56
Accrued income – DG NEAR 2019	112,560.24	0.00
<b>Total</b>	<b>79,050,870.39</b>	<b>79,762,849.15</b>

##### 3.1.2. Other operating revenue

	<b>2019</b>	<b>2018</b>
Assigned revenue	76,061.77	43,031.24
Revenue from EU entities	408,409.67	266,399.87
<b>Total</b>	<b>484,471.44</b>	<b>309,431.11</b>

EFSA has received during 2019 an amount of 406,672.77 euro from EU entities (EU agencies and EU Joint-Undertakings) in order to support the annual costs of the EUAN Shared Support Office in Brussels. In addition an amount of 1,162.31 euro and 574.59 euro from EU Agencies, ENISA and EASO has been received, respectively.

### 3.2. Administrative Expenses

The administrative expenses relate mainly to cost incurred by EFSA daily operations and the main amount concerns the staff expenses of 39,826,997.45 euro (2018: 38,348,326.14 euro) which are related to expenses such as salaries, allowances, social security contributions and other welfare expenses.

Regarding the administrative expenses, the breakdown is provided below:

<b>Administrative expenses</b>	<b>2019</b>	<b>2018</b>
Staff costs (excluding SNE's and others experts)	31,621,228.79	30,390,648.60
Pensioners and temporary unemployment	314,314.24	306,141.93
Employer's contribution for social security	939,919.42	915,030.35
Staff perquisites and social activities	27,496.88	36,422.32
Allowances (excluding SNE's and others experts)	6,134,384.36	6,054,741.57
Allowances for SNE's and others experts	789,653.76	645,341.37
<b>Total</b>	<b>39,826,997.45</b>	<b>38,348,326.14</b>

Fixed assets related expenses of 3,364,784.24 euro (2018: 2,968,377.19 euro) contain the charged amortisation/depreciation for the non-current intangible/tangible assets.

Other administrative expenses of 9,487,298.74 euro (2018: 9,157,456.24 euro) contains expenses of maintenance/security, office running costs and external service provider.

Regarding the expenses with consolidated EU entities of 2,104,783.08 euro, the breakdown is provided below:

<b>Consolidated EU entities</b>	<b>2019</b>	<b>2018</b>
Translation Center in Luxembourg - CDT	82,125.60	32,463.75
EU Intellectual Property Office – EUIPO	142,881.97	80,500.00
Human Resources DG – DG HR	1,268,669.79	1,364,968.95
Budget – DG BUDG	109,000.00	126,000.00
Office for Administration and Payment	240,730.35	245,928.54
Publications Office	384.64	1,169.80
EPSO	6,450.00	6,500.00
DG Informatics	218,774.36	119,450.00
European Environment Agency - EEA	4,675.51	0.00
EUROJUST	26,877.55	0.00
European Chemicals Agency - ECHA	4,213.31	0.00
European Aviation Safety Agency - EASA	0.00	34,607.35
<b>Total</b>	<b>2,104,783.08</b>	<b>2,011,588.39</b>

### 3.3. Operating expenses

Operating expenses of 25,599,979.86 euro (2018: 25,480,596.31 euro) euro are related to the activities of the Operational Units and also include the developments in the area of information and communication technology in relation to EFSA's operations.

Regarding the expenses with consolidated EU entities of 754,781.44 euro, the breakdown is provided below:

<b>Consolidated EU entities</b>	<b>2019</b>	<b>2018</b>
Translation Center in Luxembourg - CDT	145,203.85	154,777.15
Publications Office	6,333.64	18,564.59
DG Informatics	124,880.00	100,000.00
Joint Research Center - JRC	50,000.00	56,637.74
Human Resources DG – DG HR	137,732.00	0.00
European Chemicals Agency - ECHA	290,631.95	0.00
<b>Total</b>	<b>754,781.44</b>	<b>329,979.48</b>

### 3.4. Financial revenue

	<b>2019</b>	<b>2018</b>
Exchange rate differences	1,293.64	2,573.26
Bank interest	31,357.80	33,343.59
<b>Total</b>	<b>32,651.44</b>	<b>35,916.85</b>

Bank interest earned on the received subsidy from EC (DG SANTE) are revenue of EFSA.

### 3.5. Financial expenses

	<b>2019</b>	<b>2018</b>
Late interest payments	0.00	408.99
Exchange rate differences	2,769.33	2,720.11
Bank charges	90.00	70.00
Interest expenses	781,557.98	834,693.60
<b>Total</b>	<b>784,417.31</b>	<b>837,892.70</b>

The interest expenses corresponds to the interest paid in relation to the debt arising from the purchase of EFSA building.

## 4. CONTINGENT ASSETS AND LIABILITIES AND OTHER SIGNIFICANT DISCLOSURES

### 4.1. Contingent Assets

A contingent asset is a possible asset that arises from past events and of which the existence will be confirmed only by the occurrence or non-occurrence of one or more uncertain future events not wholly within the control of EFSA. It is not recognised because the amount of the obligation cannot be measured with sufficient reliability. A contingent asset is disclosed when an inflow of economic benefits or service potential is probable.

- Guarantees received: 250,000.00 euro

One insurance guarantee have been provided of 250,000.00 euro by the current contractor that manages the catering and canteen services in EFSA premises.

### 4.2. Contingent Liabilities

A contingent liability is a possible obligation that arises from past events and of which the existence will be confirmed only by the occurrence or non-occurrence of one or more uncertain future events not wholly within the control of EFSA; or a present obligation that arises from past events but is not recognised because: it is not probable that an outflow of resources embodying economic benefits or service potential will be required to settle the obligation or, in the rare circumstances where the amount of the obligation cannot be measured with sufficient reliability.

	2019	2018
Number legal cases pending	2	6
<b>Total</b>	<b>2</b>	<b>6</b>

An estimated amount for legal expenses of 32,500.00 euro (2018: 65,000.00 euro) is included in the provisions.

### 4.3. Other significant disclosures

#### 4.3.1. Operating Leases

Payments on rental office in Brussels, within the next two years, totalizing 88,800.00 euro.

#### 4.3.2. Contract Purchase for EFSA Seat (Building)

According to the agreements and the contract signed in December 2011 between EFSA and the company "Authority STU Spa", the maximum purchase price of the building is 38,600,000.00 euro which has been confirmed during the 2013 financial year. The contract foresees the payment of the debt by instalments in 25 years with an annual amount of 1,713,719.16 euro, in 2019.

At year end an additional payment of 477,879.86 euro on the capital debt has been paid leading to a reduction of interest due on the debt and consequent impact in future instalments. The remaining annual installments will be of 1,676,359.72 euro. The company "Authority STU Spa" has given a guarantee on the surface right (which will be cancelled upon the payment of the last instalment) and sold the debt to their financial creditor.

#### 4.3.3. Outstanding commitments not yet expensed (Carryovers)

	<b>2019</b>	<b>2018</b>
Automatic carryovers C1	12,113,345.30	12,653,543.46
Automatic carryovers C4	4,598.78	66,195.97
Automatic carryovers C5	137.18	3,989.97
Automatic carryovers C8	6,160,407.65	5,148,832.97
Automatic carryovers R0	135,443.37	49,350.38
Accrued expenses	(9,122,680.47)	(6,965,083.60)
<b>Outstanding commitments not yet expensed</b>	<b>9,291,251.81</b>	<b>10,956,829.15</b>

The amount disclosed above is the budgetary RAL ("Reste à Liquider") less related amounts that have been included as expenses in the 2019 statement of financial performance. The budgetary RAL is an amount representing the open commitments for which payments and/or de-commitments have not yet been made.

## **5. PROTECTION OF THE EFSA'S BUDGET**

### **5.1. Recoveries**

Under direct management, and in accordance with the Financial Regulation, recovery orders should be established by the authorising officer for amounts unduly paid. Recoveries are then implemented by direct bank transfer from the debtor (e.g. a supplier) or by offsetting from other amounts that EFSA owes to the debtor. The Financial Regulation foresees additional procedures to ensure the collection of recovery orders overdue, which are the object of a specific follow up by the Accounting Officer of EFSA.

### **5.2. Preventive mechanisms**

In addition to the corrective mechanisms mentioned above, EFSA uses a number of preventive mechanisms to protect the EU budget. Under direct management, preventive actions include checks made on eligibility of expenditure being claimed by beneficiaries. These ex ante controls are intended to provide reasonable assurance on the legality and regularity of expenditure being paid. EFSA can also provide guidance, particularly on contractual issues, with the aim of ensuring a sound and efficient management of funding and therefore a lower risk of irregularities.



## 6. FINANCIAL INSTRUMENTS AND RISK MANAGEMENT POLICIES

Financial instruments comprise cash, current receivables and recoverables, current payables, amounts due to and from consolidated entities. Financial instruments give rise to liquidity, credit, interest rate and foreign currency risks, information about which and how they are managed is set out below.

The carrying amounts of financial instruments are as follows:

<b>Financial assets</b>	<b>2019</b>	<b>2018</b>
Pre-financing – long term receivable	500,150.39	798,797.20
Current receivables	48,821.00	23,821.00
Sundry receivables	18,138.29	5,722.38
Prepaid expenses	2,092,371.69	2,231,943.61
Pre-financing – short term receivable	928,718.74	1,739,161.89
Cash and cash equivalents	8,307,808.84	7,624,178.34
<b>Total financial assets – A</b>	<b>11,896,008.95</b>	<b>12,423,624.42</b>
<b>Financial liabilities</b>		
Payables – long term liabilities	21,443,004.57	22,851,429.80
Current payables	1,645,083.93	1,875,928.07
Accrued charges	5,687,644.16	4,362,565.80
Payables – Third parties	0.00	0.00
Payables – EU entities	1,071,314.30	561,207.34
<b>Total financial liabilities – B</b>	<b>29,847,046.96</b>	<b>29,651,131.01</b>
<b>Total net financial instruments (A-B)</b>	<b>-17,951,038.01</b>	<b>-17,227,506.59</b>

### Liquidity risk

Liquidity is the risk that arises from the difficulty of selling an asset; for example, the risk that a given security or asset cannot be traded quickly enough in the market to prevent a loss or meet an obligation. Liquidity risk arises from the ongoing financial obligations, including settlement of payables.

The table below provides details on EFSA liabilities and their contractual maturities:

<b>31 December 2019</b>	<b>&lt; 1 year</b>	<b>1-5 years</b>	<b>&gt; 5 years</b>	<b>Total</b>
Payables–Long term liabilities	942,352.10	5,234,180.92	15,266,471.55	21,443,004.57
Current payables	1,645,083.93	0.00	0.00	1,645,083.93
Accrued charges	5,687,644.16	0.00	0.00	5,687,644.16
Payables – Third parties	0.00	0.00	0.00	0.00
Payables – EU entities	1,071,314.30	0.00	0.00	1,071,314.30
<b>Total liabilities</b>	<b>9,346,394.49</b>	<b>5,234,180.92</b>	<b>15,266,471.55</b>	<b>29,847,046.96</b>

Regarding treasury, bank accounts opened in the name of EFSA are not overdrawn. Treasury and payment operations are highly automated and rely on modern information systems. Specific procedures are applied to guarantee system security and to ensure segregation of duties in line with the Financial Regulation, the internal control standards, and audit principles. EFSA's budget principles ensure that overall cash resources for a given year are always sufficient for the execution of all payments. In order to ensure that available treasury resources are always sufficient to cover the payments to be executed in a given month, procedures regarding cash forecasting are in place.

## Credit risk

Credit risk is the risk of loss due to a debtor's non-payment or other failure to meet a contractual obligation. The default events include a delay in repayments, restructuring of borrower repayments and bankruptcy.

Treasury resources are kept with a commercial bank. The subsidy to EC (DG SANTE) as per agreement is requested 8 times a year and is based on cash forecasts. Minimum cash levels, are kept in the main bank account and as a consequence the monthly average bank balance was 10.6 million euro to ensure that EFSA risk exposure is limited. This amounts should be viewed with regard to the overall treasury balances which fluctuated in 2019 between 2.4 million euro and 22.4 million euro. In addition, specific guidelines are applied for the selection of commercial banks in order to further minimise counterparty risk to which EFSA is exposed. EFSA commercial bank has been selected by call for tenders and the credit ratings of the commercial bank where EFSA has bank accounts is reviewed regularly.

The maximum exposure to credit risk is:

<b>Receivables</b>	<b>2019</b>	<b>2018</b>
Pre-financing - Long term receivable	500,150.39	798,797.20
Current receivables	48,821.00	23,821.00
Sundry receivables	18,138.29	5,722.38
Prepaid expenses	2,092,371.69	2,231,943.61
Pre-financing – Short term receivable	928,718.74	1,739,161.89
Cash and cash equivalents	8,307,808.84	7,624,178.34
<b>Total Financial assets</b>	<b>11,896,008.95</b>	<b>12,423,624.42</b>
Impairment	0.00	0.00
Guarantees	0.00	0.00
<b>Total credit risk</b>	<b>11,896,008.95</b>	<b>12,423,624.42</b>

The credit quality of receivables, is shown below:

<b>Credit quality</b>	<b>2019</b>	<b>2018</b>
Prime and high rate	0.00	0.00
Upper medium grade *	8,307,808.84	7,624,178.34
Low medium grade	0.00	0.00
Debtors who never defaulted **	3,588,200.11	4,799,446.08
Debtors who defaulted in the past	0.00	0.00
<b>Total credit risk</b>	<b>11,896,008.95</b>	<b>12,423,624.42</b>

\* - amount relates to cash in bank

\*\* - amount relates to pre-financing (long/short term), prepaid expenses, current/sundry receivables

Analysis of the age of the receivables, past due and not impaired, is shown below:

Credit quality	Neither past due nor impaired	Past due but not impaired			Total
		< 1 year	1-5 years	> 5 years	
Pre-financing – LT	500,150.39	0.00	0.00	0.00	500,150.39
Current receivables	31,000.00	0.00	0.00	17,821.00	48,821.00
Sundry receivables	18,138.29	0.00	0.00	0.00	18,138.29
Prepaid expenses	2,092,371.69	0.00	0.00	0.00	2,092,371.69
Pre-financing – ST	928,718.74	0.00	0.00	0.00	928,718.74
Cash	8,307,808.84	0.00	0.00	0.00	8,307,808.84
<b>Total</b>	<b>11,878,187.95</b>	<b>0.00</b>	<b>0.00</b>	<b>17,821.00</b>	<b>11,896,008.95</b>

### Interest rate risk

EFSA earn interest on bank accounts balances. EFSA has put in place measures to ensure that interest earned on its bank accounts regularly reflects market interest rates, as well as their possible fluctuation. Overnight balances held on the commercial bank accounts earn interest on a daily basis but are paid to EFSA on a quarterly basis. The bank accounts held by EFSA have associated for interest calculation the ECB marginal rate for its main refinancing operations. As a result no risk exists that EFSA earns interest at rates lower than market rates. EFSA has financial liabilities on short and long term associated to the reimbursement of the building purchased (EFSA Seat) in 2011, the interest rate associated is fixed not variable.

### Foreign currency risk

All financial assets and liabilities are in EUR, therefore EFSA has no currency exposure. When miscellaneous receipts are received in currencies other than EUR, are converted into EUR and transferred to accounts held in EUR. All bank accounts held by EFSA are in EUR, no material foreign currency risk with regard to these assets.

## 7. CHANGES IN ACCOUNTING POLICIES

There have been no changes in accounting policies for the financial year 2019.

## 8. RELATED PARTY DISCLOSURE

The related parties of European Food Safety Authority are the key management personnel. They are responsible for the strategic direction and operational management of the entity and are entrusted with significant authority to execute their mandate.

Highest grade description	Grade	Number of persons of this grade
Executive Director	AD15	1

The highest staff grade of EFSA in 2019 was AD15 (Executive Director) – Dr. Bernhard Url.

In March 2014, EFSA Management Board has designated Dr. Bernhard Url as the next EFSA's Executive Director. The Executive Director Designate of EFSA, Dr. Bernhard Url, was evaluated by the Committee on Environment, Public Health and Food Safety (ENVI) in an hearing held in Strasbourg (European Parliament) on 14th April 2014. Following this hearing the European Parliament formalised its opinion in a letter by the President to the Chair of EFSA's Management Board. EFSA's Management Board appointed in May 2014 Dr. Bernhard Url as the next EFSA's Executive Director, with a five years mandate. In June 2019, Dr. Bernhard Url, was re-appointed for an additional five-year term.

The transactions of the Authority with key management personnel during financial year 2019 is composed only of the remuneration, allowances and other entitlements in accordance with the Staff Regulations of the European Communities.

## 9. EVENTS AFTER THE BALANCE SHEET DATE

### BREXIT

The United Kingdom (UK) ceased to be a Member State of the European Union (EU) after 31st January 2020. The impact of the UK's departure on the EFSA's financial situation is dependent on the terms of the withdrawal agreement, stand-still transition periods ends in December 2020. Consequently, it is currently not possible to make a reasonable assessment of the impact of the UK's departure from the EU on EFSA's financial situation.

Other than the aforementioned item, at the date of transmission of these annual accounts, no material issues were reported that would require separate disclosure under this section. The annual accounts and related notes were prepared using the most recently available information and this is reflected in the information presented.

### COVID-19

During the first half of 2020, the coronavirus outbreak has had huge impacts on the EU economy. As a non-adjusting event, the outbreak of the coronavirus does not require any adjustments to the figures reported in these annual accounts.

For subsequent reporting periods, COVID-19 may affect the recognition and measurement of some assets and liabilities on the balance sheet and also of some revenue and expenses recognised in the statement of financial performance. Based on the information available at the date of signature of these annual accounts, the financial effects of the coronavirus outbreak cannot be reliably estimated.

## **REPORTS ON IMPLEMENTATION OF THE BUDGET**

## BUDGETARY STRUCTURE AND PRINCIPLES

The budgetary accounts are kept in accordance with the Financial Regulation and its rules of application. The budget is the instrument which, for each financial year, forecasts and authorises the revenue and expenditure considered necessary for the implementation of EFSA's founding regulation.

Every year, EFSA estimates its revenue and expenditure for the year and draws up a draft budget which it sends to the Commission. The Commission then sends it to the budgetary authority. On the basis of this draft budget, the Council draws its position which is then the subject of negotiations between the two arms of the budgetary authority. The President of the Parliament declares that the joint draft has been finally adopted, thus making the budget enforceable. The task of executing the budget is the responsibility of EFSA.

The budget structure for EFSA consists of administrative and operational appropriations and has not only non-differentiated appropriations as well as differentiated appropriations, meaning that the commitment and the payment appropriations might not be have the same amount. Non-differentiated appropriations are used to finance operations of an annual nature (which comply with the principle of annuality) while differentiated appropriations are used to finance multi-annual operations.

### Origin of Appropriations

The main source of appropriations is EFSA budget for the current year. However, there are other types of appropriations resulting from the provisions of the Financial Regulation. They come from previous financial years or outside sources:

- **Initial budget appropriations** adopted for the current year can be supplemented with transfers between lines and by amending budgets.
- **Appropriations carried over** from previous year or made available again also supplement the current budget.
- **Assigned revenue** which can be a revenue made up of refunds where the amounts allocated on the budget line which incurred the initial expenditure and may be carried over for one year only or a revenue such as contributions from Member States.

### Composition of Appropriations Available

- Initial budget = appropriations voted in year N-1;
- Final budget appropriations = initial budget appropriations adopted + amending budget appropriations + transfers + additional appropriations;
- Additional appropriations = assigned revenue (see above) + appropriations carried over from the previous financial year.

## **Calculation of the Budget Result**

The revenue entered in the accounts is the amount actually received during the course of the year. For the purposes of calculating the budget result for the year, expenditure comprises payments made against the year's appropriations plus any of the appropriations for that year that are carried over to the following year. Payments made against the year's appropriations means payments that are made by the accounting officer by 31 December of the financial year.

The following are added to or deducted from the resulting figure:

- the net balance of cancellations of payment appropriations carried over from previous years and any payments which, because of fluctuations in the euro rate, exceed non-differentiated appropriations carried over from the previous year; and
- the balance of exchange-rate gains and losses recorded during the year.

Payment appropriations carried over include: automatic carryovers and carryovers by decision. The cancellation of unused payment appropriations carried over from the previous year shows the cancellations on appropriations carried over automatically and by decision. It also includes the decrease in assigned revenue appropriations carried over to the next year in comparison with previous year.

## **Budgetary principles**

The budget of EFSA has been established in compliance with the principles of unity, budget accuracy, annuality, equilibrium, unit of account, universality, specification, sound financial management and transparency as set out in the EFSA's Financial Regulation.

## BUDGET RESULT

	2019	2018
<b>Revenue</b>		
Commission subsidy DG SANTE	79,253,441.62	80,011,461.86
Commission subsidy DG NEAR	750,000.00	0.00
Other revenue - C4	459,471.44	288,897.46
Other revenue - bank interest	33,343.59	59,244.25
Miscellaneous revenue	0.00	0.00
<b>Total revenue (a)</b>	<b>80,496,256.65</b>	<b>80,359,603.57</b>
<b>Expenditure</b>		
<b>Personnel expenses - Budget Title I</b>		
Payments	-43,838,205.62	-41,926,395.79
Automatic carryovers	-885,526.85	-1,059,315.69
<b>Administrative expenses - Budget Title II</b>		
Payments	-8,242,921.04	-8,281,672.90
Automatic carryovers	-2,300,049.12	-2,438,407.75
<b>Operational expenses - Budget Title III</b>		
Payments	-20,885,203.57	-23,398,230.50
Automatic carryovers	-4,669,317.89	-3,633,389.30
<b>Total expenditure (b)</b>	<b>-80,821,224.09</b>	<b>-80,737,411.93</b>
<b>Outturn for the financial year (a-b)</b>	<b>-324,967.44</b>	<b>-377,808.36</b>
Cancellation of unused carryovers	424,520.61	206,165.59
Adjustment for carry-over from previous years	335,797.06	614,253.89
Exchange differences for the year	-1,475.69	-146.85
Balance carried over from year N-1	442,464.27	310,365.62
Reimbursement to EC - DG SANTE	-442,464.27	-310,365.62
<b>Balance of the outturn account:</b>		
<b>DG SANTE</b>	<b>429,374.59</b>	<b>442,464.27</b>
<b>DG NEAR</b>	<b>4,499.95</b>	<b>0.00</b>



## RECONCILIATION OF ECONOMIC RESULT WITH BUDGET RESULT

	2019	2018
<b>ECONOMIC RESULT OF THE YEAR</b>	<b>-2,355,048.85</b>	<b>973,980.66</b>
<b>Adjustments for accrual items (items included in the economic result but not in the budget result)</b>		
Accrual Cut-off (reversal 31.12.N-1)	-7,680,887.23	-8,732,940.30
Accrual Cut-off (cut-off 31.12.N)	8,317,987.91	5,593,263.64
Unpaid invoices at year end but booked in charges	1,641,786.78	1,855,471.73
Depreciation/amortisation of intangible and tangible assets	3,339,739.55	2,964,874.40
Value reductions	25,044.69	3,502.79
Recovery Orders issued in the year and not yet cashed	-31,000.00	0.0
Provisions	-32,500.00	25,000.00
Prefinancing given in previous years and cleared in the year	1,607,887.84	2,642,054.75
Prefinancing received by DG NEAR and cleared in the year	-231,303.31	-205,914.09
Payments made from carry-over of payment appropriations	6,370,795.07	5,970,419.83
Other *	-34,127.13	-36,063.70
<b>Adjustments for budgetary items (items included in the budget result but not in the economic result)</b>		
Purchase of tangible fixed assets	-1,521,863.42	-625,678.87
Purchase of intangible fixed assets	-158,250.55	-561,232.73
New prefinancing paid in the year and remaining open	-1,525,104.20	-1,816,226.77
New prefinancing received in the year and remaining open – DG SANTE	429,374.59	442,464.27
New prefinancing received from DG NEAR in the year and remaining open	750,000.00	0.00
Prefinancing received from Third Parties in previous years and cleared in the year	0.00	-25,000.00
Budgetary recovery orders issued the year before and cashed in the year	6,000.00	4,466.35
Budgetary recovery orders issued on balance sheet accounts and cashed	33,343.59	59,244.25
Payments on building debt	-2,191,599.02	-2,364,335.01
Payments on financial charges	784,417.31	837,892.70
Payment appropriations carried over to year N+1	-7,854,893.86	-7,131,112.74
Cancellation of unused carried over payment appropriations	424,520.61	206,165.59
Adjustment for carry-over from the previous year	335,797.06	614,253.89
Adjustment in fixed assets (It software – under construction)	-20,652.84	-251,607.38
Other **	-90.00	-478.99
<b>BUDGET RESULT OF THE YEAR</b>	<b>429,374.59</b>	<b>442,464.27</b>

Notes:

- Other \*) – Financial revenues, exchange differences of the year
- Other \*\*) – Bank charges and late interest payment

The economic result of the year is calculated on the basis of accrual accounting principles. The budget result is however based on modified cash accounting rules, in accordance with the Financial Regulation. As the economic result and the budget result both cover the same underlying operational transactions, it is a useful control to ensure that they are reconcilable.

The actual budgetary revenue for a financial year corresponds to the revenue collected from entitlements established in the course of the year and amounts collected from entitlements established in previous years. Therefore the entitlements established in the current year but not yet collected are to be deducted from the economic result for reconciliation purposes as they do not form part of budgetary revenue. On the contrary the entitlements established in previous years and collected in current year must be added to the economic result for reconciliation purposes.

The net accrued expenses mainly consist of accruals made for year-end cut-off purposes, i.e. eligible expenses incurred by beneficiaries of EU funds but not yet reported to EFSA. While accrued expenses are not considered as budgetary expenditure, payments made in the current year relating to invoices registered in prior years are part of current year's budgetary expenditure.

The net effect of pre-financing is the combination of (1) the new pre-financing amounts paid in the current year and recognised as budgetary expenditure of the year and (2) the clearing of the prefinancing paid in current year or previous years through the acceptance of eligible costs. The latter represent an expense in accrual terms but not in the budgetary accounts since the payment of the initial pre-financing had already been considered as a budgetary expenditure at the time of its payment.

Besides the payments made against the year's appropriations, the appropriations for that year that are carried to the next year also need to be taken into account in calculating the budget result for the year. The same applies for the budgetary payments made in the current year from carry-overs and the cancellation of unused payment appropriations.

The movement in provisions relates to year-end estimates made in the accrual accounts (employee benefits mainly) that do not impact the budgetary accounts. Other reconciling amounts comprise different elements such as asset depreciation, asset acquisitions, capital lease payments and financial participations for which the budgetary and accrual accounting treatments differ.

# **BUDGET IMPLEMENTATION**

**Fund Source : C1 Appropriations - Title I**

Budget line	Official Budget Item Description	Commitment Appropriation (1)	Executed Commitment (2)	Credit Not Used (1-2)	Payment Appropriation (3)	Executed Payment			Carry forward CA	Carry forward PA
						Current year commitment (4)	Previous year commitment (5)	Total (4+5) = (6)		
A-1100	Basic salary	23,382,876.45	23,382,876.45	0.00	23,382,876.45	23,382,876.45	0.00	23,382,876.45	0.00	0.00
A-1101	Family allowance	3,059,619.47	3,059,619.47	0.00	3,059,619.47	3,059,619.47	0.00	3,059,619.47	0.00	0.00
A-1102	Transfer and expatriation allowance	2,570,866.30	2,570,866.30	0.00	2,570,866.30	2,570,866.30	0.00	2,570,866.30	0.00	0.00
A-1103	Secretarial allowance	12,272.70	12,272.70	0.00	12,272.70	12,272.70	0.00	12,272.70	0.00	0.00
A-1113	Stagiaires	992,379.28	992,379.28	0.00	992,379.28	992,379.28	0.00	992,379.28	0.00	0.00
A-1115	Contract staff	7,268,020.91	7,268,020.91	0.00	7,268,020.91	7,268,020.91	0.00	7,268,020.91	0.00	0.00
A-1130	Insurance against sickness	844,935.53	844,935.53	0.00	844,935.53	844,935.53	0.00	844,935.53	0.00	0.00
A-1131	Insurance against accidents and occ	94,983.89	94,983.89	0.00	94,983.89	94,983.89	0.00	94,983.89	0.00	0.00
A-1132	Unemployment insurance for tempor	314,314.24	314,314.24	0.00	314,314.24	314,314.24	0.00	314,314.24	0.00	0.00
A-1140	Birth and death allowance	594.93	594.93	0.00	594.93	594.93	0.00	594.93	0.00	0.00
A-1141	Annual leave traveling expenses	283,407.72	283,407.72	0.00	283,407.72	283,407.72	0.00	283,407.72	0.00	0.00
A-1147	Call on duties	33,381.83	33,381.83	0.00	33,381.83	33,381.83	0.00	33,381.83	0.00	0.00
A-1171	Translation and interpretation	74,680.00	74,680.00	0.00	74,680.00	73,298.60	0.00	73,298.60	1,381.40	1,381.40
A-1172	Payment for administrative assistanc	250,000.00	250,000.00	0.00	250,000.00	239,800.80	0.00	239,800.80	10,199.20	10,199.20
A-1175	Interim services	1,399,000.00	1,399,000.00	0.00	1,399,000.00	1,222,377.55	0.00	1,222,377.55	176,622.45	176,622.45
A-1176	Consultancy and HR services	116,594.88	116,594.88	0.00	116,594.88	14,504.88	0.00	14,504.88	102,090.00	102,090.00
A-1177	Other services	203,860.00	203,860.00	0.00	203,860.00	138,145.60	0.00	138,145.60	65,714.40	65,714.40
A-1180	Miscellaneous expenditure on recruit	132,827.37	132,827.37	0.00	132,827.37	132,564.37	0.00	132,564.37	263.00	263.00
A-1181	Travel expenses (including for memb	2,111.75	2,111.75	0.00	2,111.75	2,111.75	0.00	2,111.75	0.00	0.00
A-1182	Installation resettlement and transfer	87,716.74	87,716.74	0.00	87,716.74	87,716.74	0.00	87,716.74	0.00	0.00
A-1183	Removal expenses	47,124.40	47,124.40	0.00	47,124.40	47,124.40	0.00	47,124.40	0.00	0.00
A-1184	Temporary daily subsistence allowar	37,288.52	37,288.52	0.00	37,288.52	37,288.52	0.00	37,288.52	0.00	0.00
A-1300	Missions and travel expenses	191,500.00	191,500.00	0.00	191,500.00	191,500.00	0.00	191,500.00	0.00	0.00
A-1301	Shuttles for missions and duty	49,000.00	49,000.00	0.00	49,000.00	43,954.78	0.00	43,954.78	5,045.22	5,045.22
A-1400	Restaurants meals and canteens	39,809.88	39,809.88	0.00	39,809.88	38,505.00	0.00	38,505.00	1,304.88	1,304.88
A-1410	Medical service	203,077.37	202,973.14	104.23	203,077.37	188,120.14	0.00	188,120.14	14,853.00	14,853.00
A-1420	Further training language courses ar	369,234.29	369,234.29	0.00	369,234.29	220,049.84	0.00	220,049.84	149,184.45	149,184.45
A-1520	Visiting experts National Experts on	785,486.78	785,486.78	0.00	785,486.78	781,120.43	0.00	781,120.43	4,366.35	4,366.35
A-1610	Social contacts between staff	28,074.97	27,624.97	450.00	28,074.97	23,124.97	0.00	23,124.97	4,500.00	4,500.00
A-1630	Early Childhood Centres creches and	1,305,575.52	1,305,575.52	0.00	1,305,575.52	1,305,575.52	0.00	1,305,575.52	0.00	0.00
A-1640	Complementary aid for the handicapp	0.00	0.00	0.00	0.00	0.00	0.00	0.00	0.00	0.00
A-1700	Reception and entertainment expens	149.00	149.00	0.00	149.00	149.00	0.00	149.00	0.00	0.00
	<b>TITLE I - TOTAL</b>	<b>44,180,764.72</b>	<b>44,180,210.49</b>	<b>554.23</b>	<b>44,180,764.72</b>	<b>43,644,686.14</b>	<b>0.00</b>	<b>43,644,686.14</b>	<b>535,524.35</b>	<b>535,524.35</b>

**Fund Source : C1 Appropriations – Title II**

Budget line	Official Budget Item Description	Commitment Appropriation (1)	Executed Commitment (2)	Credit Not Used (1-2)	Payment Appropriation (3)	Executed Payment			Carry forward CA	Carry forward PA
						Current year commitment (4)	Previous year commitment (5)	Total (4+5) = (6)		
A-2000	Rent	31,327.48	31,327.48	0.00	31,327.48	31,327.48	0.00	31,327.48	0.00	0.00
A-2001	Acquisition	2,191,599.02	2,191,599.02	0.00	2,191,599.02	2,191,599.02	0.00	2,191,599.02	0.00	0.00
A-2010	Insurance	27,587.18	27,587.18	0.00	27,587.18	27,587.18	0.00	27,587.18	0.00	0.00
A-2020	Water gas electricity and heating	500,341.17	500,341.17	0.00	500,341.17	391,625.05	0.00	391,625.05	108,716.12	108,716.12
A-2030	Maintenance	351,546.70	351,546.70	0.00	351,546.70	211,208.89	0.00	211,208.89	140,337.81	140,337.81
A-2031	Cleaning	289,998.50	289,998.50	0.00	289,998.50	210,566.25	0.00	210,566.25	79,432.25	79,432.25
A-2040	Refurbishment of premises Fitting-out	646,898.57	646,898.57	0.00	646,898.57	245,755.29	0.00	245,755.29	401,143.28	401,143.28
A-2050	Security and surveillance of buildings	769,085.36	769,085.36	0.00	769,085.36	583,978.47	0.00	583,978.47	185,106.89	185,106.89
A-2080	Preliminary to construction acquisition	279,022.78	279,022.78	0.00	279,022.78	211,092.78	0.00	211,092.78	67,930.00	67,930.00
A-2090	Other expenditure on buildings	710,315.61	710,315.61	0.00	710,315.61	600,154.96	0.00	600,154.96	110,160.65	110,160.65
A-2100	Purchase / Maintenance of IT equipment	1,067,048.24	1,067,048.24	0.00	1,067,048.24	685,125.23	0.00	685,125.23	381,923.01	381,923.01
A-2101	Purchase / Maintenance of software	875,774.08	875,774.08	0.00	875,774.08	740,847.89	0.00	740,847.89	134,926.19	134,926.19
A-2103	Software development	846,405.18	846,405.18	0.00	846,405.18	628,859.71	0.00	628,859.71	217,545.47	217,545.47
A-2104	User support	961,918.61	961,918.61	0.00	961,918.61	780,839.73	0.00	780,839.73	181,078.88	181,078.88
A-2200	Technical equipment and installation	82,526.67	82,526.67	0.00	82,526.67	81,416.67	0.00	81,416.67	1,110.00	1,110.00
A-2210	Purchase of furniture	196,020.98	196,020.98	0.00	196,020.98	128,782.08	0.00	128,782.08	67,238.90	67,238.90
A-2300	Stationery and office supplies	28,983.24	28,983.24	0.00	28,983.24	23,769.75	0.00	23,769.75	5,213.49	5,213.49
A-2320	Bank charges	150.00	150.00	0.00	150.00	90.00	0.00	90.00	60.00	60.00
A-2330	Legal expenses	188,719.61	188,719.61	0.00	188,719.61	129,190.12	0.00	129,190.12	59,529.49	59,529.49
A-2350	Miscellaneous insurance	5,471.17	5,471.17	0.00	5,471.17	4,272.80	0.00	4,272.80	1,198.37	1,198.37
A-2390	Publications	3,153.00	3,153.00	0.00	3,153.00	2,203.00	0.00	2,203.00	950.00	950.00
A-2400	Postal charges	16,400.00	16,400.00	0.00	16,400.00	10,353.73	0.00	10,353.73	6,046.27	6,046.27
A-2410	Telecommunications subscriptions and services	88,077.88	88,077.88	0.00	88,077.88	62,931.61	0.00	62,931.61	25,146.27	25,146.27
A-2411	Purchase and installation of equipment	212,876.28	212,876.28	0.00	212,876.28	198,616.90	0.00	198,616.90	14,259.38	14,259.38
A-2500	Management Board meetings	52,964.18	52,964.18	0.00	52,964.18	35,239.42	0.00	35,239.42	17,724.76	17,724.76
	<b>TITLE II - TOTAL</b>	<b>10,424,211.49</b>	<b>10,424,211.49</b>	<b>0.00</b>	<b>10,424,211.49</b>	<b>8,217,434.01</b>	<b>0.00</b>	<b>8,217,434.01</b>	<b>2,206,777.48</b>	<b>2,206,777.48</b>

**Fund Source : C1 Appropriations – Title III**

Budget line	Official Budget Item Description	Commitment Appropriation (1)	Executed Commitment (2)	Credit Not Used (1-2)	Payment Appropriation (3)	Executed Payment			Carry forward CA	Carry forward PA
						Current year commitment (4)	Previous year commitment (5)	Total (4+5) = (6)		
B-3020	REPRO Experts meetings	2,724,117.38	2,720,117.38	4,000.00	2,724,117.38	2,653,468.26	0.00	2,653,468.26	66,649.12	66,649.12
B-3120	RASA Experts meetings	2,601,253.43	2,598,553.43	2,700.00	2,601,253.43	2,532,805.40	0.00	2,532,805.40	65,748.03	65,748.03
B-3210 *	EFSA Grants & Procurement	7,870,424.98	7,870,209.24	215.74	7,110,024.98	2,522,266.86	4,586,243.55	7,108,510.41	5,347,942.38	0.00
B-3220	Scientific Cooperations meetings	53,688.85	53,475.07	213.78	53,688.85	53,475.07	0.00	53,475.07	0.00	0.00
B-3410	Risk Communication web managem	1,116,155.42	1,116,141.40	14.02	1,116,155.42	916,592.72	0.00	916,592.72	199,548.68	199,548.68
B-3420	External relations	178,563.74	176,740.91	1,822.83	178,563.74	131,575.86	0.00	131,575.86	45,165.05	45,165.05
B-3500	Operational IT Systems	5,405,550.14	5,405,550.14	0.00	5,405,550.14	3,382,488.35	0.00	3,382,488.35	2,023,061.79	2,023,061.79
B-3501 *	Multiannual operational IT projects	0.00	0.00	0.00	60,400.00	0.00	60,400.00	60,400.00	0.00	0.00
B-3511	Translation Interpretation Linguistic	197,000.00	197,000.00	0.00	197,000.00	126,486.52	0.00	126,486.52	70,513.48	70,513.48
B-3512	Library	579,852.98	579,842.79	10.19	579,852.98	493,925.05	0.00	493,925.05	85,917.74	85,917.74
B-3513	Mission of staff related to operationa	712,000.00	712,000.00	0.00	712,000.00	695,752.15	0.00	695,752.15	16,247.85	16,247.85
B-3514	Shuttles and prepaid travels for expe	1,689,472.35	1,689,472.35	0.00	1,689,472.35	1,652,503.91	0.00	1,652,503.91	36,968.44	36,968.44
B-3520	Conferences & Outreach	563,725.06	563,725.06	0.00	563,725.06	492,198.65	0.00	492,198.65	71,526.41	71,526.41
B-3530	Operational Development & Control	1,612,754.67	1,612,754.67	0.00	1,612,754.67	290,800.17	0.00	290,800.17	1,321,954.50	1,321,954.50
B-3540	Quality Management	77,250.00	77,250.00	0.00	77,250.00	57,450.00	0.00	57,450.00	19,800.00	19,800.00
	<b>TITLE III - TOTAL</b>	<b>25,381,809.00</b>	<b>25,372,832.44</b>	<b>8,976.56</b>	<b>24,681,809.00</b>	<b>16,001,788.97</b>	<b>4,646,643.55</b>	<b>20,648,432.52</b>	<b>9,371,043.47</b>	<b>4,023,101.09</b>
	<b>GRAND TOTAL</b>	<b>79,986,785.21</b>	<b>79,977,254.42</b>	<b>9,530.79</b>	<b>79,286,785.21</b>	<b>67,863,909.12</b>	<b>4,646,643.55</b>	<b>72,510,552.67</b>	<b>12,113,345.30</b>	<b>6,765,402.92</b>

Notes:\* - The appropriations on the B-3210 (EFSA Grants & Procurement) and B-3501 (Multiannual operational IT projects) are of type differentiated appropriations. The commitments appropriations extends over more than one financial year and payment appropriations are not carried forward.

**Fund Source : C4 Appropriations**

Budget line	Official Budget Item Description	Commitment Appropriation (1)	Executed Commitment (2)	Credit Not Used (1-2)	Payment Appropriation (3)	Executed Payment (4)	R A L (2-4)
A-1113	Stagiaires	575.00	575.00	0.00	575.00	575.00	0.00
A-1115	Contract staff	319,391.40	0.00	319,391.40	319,391.40	0.00	0.00
A-1177	Other services	25,509.73	6,072.00	19,437.73	25,509.73	6,072.00	0.00
A-1180	Miscellaneous expenditure on recruit	6,000.00	0.00	6,000.00	6,000.00	0.00	0.00
A-1300	Missions and travel expenses	10,240.76	9,666.17	574.59	10,240.76	5,067.39	4,598.78
	<b>TITLE I - TOTAL</b>	<b>361,716.89</b>	<b>16,313.17</b>	<b>345,403.72</b>	<b>361,716.89</b>	<b>11,714.39</b>	<b>4,598.78</b>
A-2000	Rent	49,081.93	0.00	49,081.93	49,081.93	0.00	0.00
A-2100	Purchase / Maintenance of IT equipm	12,689.71	0.00	12,689.71	12,689.71	0.00	0.00
A-2330	Legal expenses	31,500.00	0.00	31,500.00	31,500.00	0.00	0.00
	<b>TITLE II - TOTAL</b>	<b>93,271.64</b>	<b>0.00</b>	<b>93,271.64</b>	<b>93,271.64</b>	<b>0.00</b>	<b>0.00</b>
B-3020	REPRO Experts meetings	2,907.50	0.00	2,907.50	2,907.50	0.00	0.00
B-3120	RASA Experts meetings	476.00	0.00	476.00	476.00	0.00	0.00
B-3420	External relations	1,060.00	343.00	717.00	1,060.00	343.00	0.00
B-3513	Mission of staff related to operationa	39.41	0.00	39.41	39.41	0.00	0.00
	<b>TITLE III - TOTAL</b>	<b>4,482.91</b>	<b>343.00</b>	<b>4,139.91</b>	<b>4,482.91</b>	<b>343.00</b>	<b>0.00</b>
	<b>GRAND TOTAL</b>	<b>459,471.44</b>	<b>16,656.17</b>	<b>442,815.27</b>	<b>459,471.44</b>	<b>12,057.39</b>	<b>4,598.78</b>

**Fund Source : C5 Appropriations**

Budget line	Official Budget Item Description	Commitment Appropriation (1)	Executed Commitment (2)	Credit Not Used (1-2)	Payment Appropriation (3)	Executed Payment (4)	R A L (2-4)
A-1113	Stagiaires	1,120.00	1,120.00	0.00	1,120.00	1,120.00	0.00
A-1115	Contract staff	173,648.00	173,648.00	0.00	173,648.00	173,648.00	0.00
A-1420	Further training language courses a	2,870.11	2,870.11	0.00	2,870.11	2,870.11	0.00
A-1520	Visiting experts National Experts or	4,166.98	4,166.98	0.00	4,166.98	4,166.98	0.00
	<b>TITLE I - TOTAL</b>	<b>181,805.09</b>	<b>181,805.09</b>	<b>0.00</b>	<b>181,805.09</b>	<b>181,805.09</b>	<b>0.00</b>
A-2000	Rent	17,450.00	17,450.00	0.00	17,450.00	17,450.00	0.00
A-2100	Purchase / Maintenance of IT equipm	522.03	522.03	0.00	522.03	522.03	0.00
A-2300	Stationery and office supplies	7,515.00	7,515.00	0.00	7,515.00	7,515.00	0.00
	<b>TITLE II - TOTAL</b>	<b>25,487.03</b>	<b>25,487.03</b>	<b>0.00</b>	<b>25,487.03</b>	<b>25,487.03</b>	<b>0.00</b>
B-3020	REPRO Experts meetings	2,700.57	2,700.57	0.00	2,700.57	2,700.57	0.00
B-3120	RASA Experts meetings	350.00	350.00	0.00	350.00	350.00	0.00
B-3210	EFSA Grants & Procurement	137.18	137.18	0.00	137.18	0.00	137.18
B-3500	Operational IT Systems	189.02	189.02	0.00	189.02	189.02	0.00
B-3513	Mission of staff related to operationa	385.10	385.10	0.00	385.10	385.10	0.00
	<b>TITLE III - TOTAL</b>	<b>3,761.87</b>	<b>3,761.87</b>	<b>0.00</b>	<b>3,761.87</b>	<b>3,624.69</b>	<b>137.18</b>
	<b>GRAND TOTAL</b>	<b>211,053.99</b>	<b>211,053.99</b>	<b>0.00</b>	<b>211,053.99</b>	<b>210,916.81</b>	<b>137.18</b>

**Fund Source : R0 Appropriations**

Budget line	Official Budget Item Description	Commitment Appropriation (1)	Executed Commitment (2)	Credit Not Used (1-2)	Payment Appropriation (3)	Executed Payment (4)	R A L (2-4)
B-3230	Pre-acession programme	868,743.07	362,246.73	506,496.34	868,743.07	226,803.36	135,443.37
B-3241	Collaboration with FAO	6,000.00	6,000.00	0.00	6,000.00	6,000.00	0.00
	<b>GRAND TOTAL</b>	<b>874,743.07</b>	<b>368,246.73</b>	<b>506,496.34</b>	<b>874,743.07</b>	<b>232,803.36</b>	<b>135,443.37</b>

**Notes:**

\* - The appropriations on the B-3230 (Pre-acession programme) of 118,743.07 euro is originated from 2018 credits carry forward.

**Fund Source : C8 Appropriations – Non-Differentiated Appropriations - Title I**

Budget line	Official Budget Item Description	Commitment Appropriation (1)	Executed Commitment (2)	Payment Appropriation (3)	Executed Payment (4)	Credit Not Used (1-2)
A-1171	Translation and interpretation	10,150.00	2,755.00	10,150.00	2,755.00	7,395.00
A-1172	Payment for administrative assistance from the Com	1,000.00	929.55	1,000.00	929.55	70.45
A-1175	Interim services	146,247.05	127,663.28	146,247.05	127,663.28	18,583.77
A-1176	Consultancy and HR services	204,096.42	166,246.43	204,096.42	166,246.43	37,849.99
A-1177	Other services	108,404.80	68,404.80	108,404.80	68,404.80	40,000.00
A-1180	Miscellaneous expenditure on recruitment	19,346.04	15,845.00	19,346.04	15,845.00	3,501.04
A-1300	Missions and travel expenses	21,398.68	13,163.71	21,398.68	13,163.71	8,234.97
A-1301	Shuttles for missions and duty	7,735.61	7,225.42	7,735.61	7,225.42	510.19
A-1400	Restaurants meals and canteens	2,801.28	2,562.30	2,801.28	2,562.30	238.98
A-1410	Medical service	57,314.00	56,148.00	57,314.00	56,148.00	1,166.00
A-1420	Further training language courses and retraining	291,341.47	264,245.97	291,341.47	264,245.97	27,095.50
A-1610	Social contacts between staff	5,209.25	5,081.16	5,209.25	5,081.16	128.09
A-1700	Reception and entertainment expenses	2,466.00	2,466.00	2,466.00	2,466.00	0.00
	<b>TITLE I - TOTAL</b>	<b>877,510.60</b>	<b>732,736.62</b>	<b>877,510.60</b>	<b>732,736.62</b>	<b>144,773.98</b>

**Fund Source : C8 Appropriations – Non-Differentiated Appropriations - Title II**

Budget line	Official Budget Item Description	Commitment Appropriation (1)	Executed Commitment (2)	Payment Appropriation (3)	Executed Payment (4)	Credit Not Used (1-2)
A-2000	Rent	56,814.00	56,814.00	56,814.00	56,814.00	0.00
A-2020	Water gas electricity and heating	51,360.32	51,360.32	51,360.32	51,360.32	0.00
A-2030	Maintenance	86,446.77	86,311.02	86,446.77	86,311.02	135.75
A-2031	Cleaning	61,748.00	61,748.00	61,748.00	61,748.00	0.00
A-2040	Refurbishment of premises Fitting-out	471,125.19	467,948.23	471,125.19	467,948.23	3,176.96
A-2050	Security and surveillance of buildings	196,629.57	194,522.57	196,629.57	194,522.57	2,107.00
A-2080	Preliminary to construction acquisition or rental o	225,299.00	225,299.00	225,299.00	225,299.00	0.00
A-2090	Other expenditure on buildings	120,684.14	107,603.01	120,684.14	107,603.01	13,081.13
A-2100	Purchase / Maintenance of IT equipment	482,118.10	478,889.31	482,118.10	478,889.31	3,228.79
A-2101	Purchase / Maintenance of software	44,884.03	44,884.03	44,884.03	44,884.03	0.00
A-2103	Software development	161,879.78	148,577.63	161,879.78	148,577.63	13,302.15
A-2104	User support	98,952.61	98,952.61	98,952.61	98,952.61	0.00
A-2200	Technical equipment and installations	24,055.00	24,055.00	24,055.00	24,055.00	0.00
A-2210	Purchase of furniture	87,511.24	87,511.24	87,511.24	87,511.24	0.00
A-2300	Stationery and office supplies	6,073.22	6,073.22	6,073.22	6,073.22	0.00
A-2320	Bank charges	80.00	0.00	80.00	0.00	80.00
A-2330	Legal expenses	19,125.00	19,125.00	19,125.00	19,125.00	0.00
A-2350	Miscellaneous insurance	1,104.63	791.60	1,104.63	791.60	313.03
A-2390	Publications	822.31	384.64	822.31	384.64	437.67
A-2400	Postal charges	7,351.11	3,232.92	7,351.11	3,232.92	4,118.19
A-2410	Telecommunications subscriptions and charges	183,597.29	148,580.14	183,597.29	148,580.14	35,017.15
A-2411	Purchase and installation of equipment	10,579.74	10,579.74	10,579.74	10,579.74	0.00
A-2500	Management Board meetings	14,679.67	11,782.72	14,679.67	11,782.72	2,896.95
	<b>TITLE II - TOTAL</b>	<b>2,412,920.72</b>	<b>2,335,025.95</b>	<b>2,412,920.72</b>	<b>2,335,025.95</b>	<b>77,894.77</b>

**Fund Source : C8 Appropriations – Non-Differentiated Appropriations - Title III**

Budget line	Official Budget Item Description	Commitment Appropriation (1)	Executed Commitment (2)	Payment Appropriation (3)	Executed Payment (4)	Credit Not Used (1-2)
B-3020	REPRO Experts meetings	124,644.57	109,866.39	124,644.57	109,866.39	14,778.18
B-3120	RASA Experts meetings	152,409.12	128,491.27	152,409.12	128,491.27	23,917.85
B-3220	Scientific Cooperations meetings	1,608.70	1,057.45	1,608.70	1,057.45	551.25
B-3410	Risk Communication web management communication ac	176,842.45	145,231.58	176,842.45	145,231.58	31,610.87
B-3420	External relations	28,463.64	27,730.73	28,463.64	27,730.73	732.91
B-3500	Operational IT Systems	1,916,024.52	1,815,775.45	1,916,024.52	1,815,775.45	100,249.07
B-3511	Translation Interpretation Linguistic Proofreadi	19,063.60	18,998.77	19,063.60	18,998.77	64.83
B-3512	Library	92,696.85	82,604.98	92,696.85	82,604.98	10,091.87
B-3513	Mission of staff related to operational duties	27,435.40	27,435.40	27,435.40	27,435.40	0.00
B-3514	Shuttles and prepaid travels for experts and shutt	49,652.04	47,509.49	49,652.04	47,509.49	2,142.55
B-3520	Conferences & Outreach	169,713.93	157,550.35	169,713.93	157,550.35	12,163.58
B-3530	Operational Development & Control	678,670.64	673,121.74	678,670.64	673,121.74	5,548.90
B-3540	Quality Management	67,658.90	67,658.90	67,658.90	67,658.90	0.00
	<b>TITLE III - TOTAL</b>	<b>3,504,884.36</b>	<b>3,303,032.50</b>	<b>3,504,884.36</b>	<b>3,303,032.50</b>	<b>201,851.86</b>
	<b>GRAND TOTAL</b>	<b>6,795,315.68</b>	<b>6,370,795.07</b>	<b>6,795,315.68</b>	<b>6,370,795.07</b>	<b>424,520.61</b>



Notes:

- The amount on A-2000 (Rent) of 56,814.00 euro includes an amount of 31,728.00 euro carried forward from 2018 credits (C4).
- The amount on A-2040 (Refurbishment of premises Fitting-out) of 471,125.19 euro includes an amount of 878.00 euro carried forward from 2018 credits (C4).
- The amount on A-2100 (Purchase / Maintenance of IT equipment) of 482,118.10 euro includes an amount of 33,589.97 euro carried forward from 2018 credits (C4).
- The amount on B-3020 (REPRO Experts meetings) of 124,644.57 euro includes an amount of 2,441.58 euro carried forward from 2018 credits (C5).
- The amount on B-3512 (Library) of 92,696.85 euro includes an amount of 1,548.39 euro carried forward from 2018 credits (C5).

**Fund Source : C8 Appropriations - Differentiated Appropriations - Title III**

Budget line	Official Budget Item Description	Commitment Appropriation (1)	Executed Commitment (2)	Credit Not Used (1-2)	Payment Appropriation (3)	Executed Payment (4)	R A L (2-4)
B-3210	EFSA Grants & Procurement	10,918,330.92	10,648,135.43	270,195.49	0.00	4,586,243.55	6,061,891.88
B-3501	Multiannual operational IT projects	158,915.77	158,915.77	0.00	0.00	0.00	98,515.77
	<b>GRAND TOTAL</b>	<b>11,077,246.69</b>	<b>10,807,051.20</b>	<b>270,195.49</b>	<b>0.00</b>	<b>4,586,243.55</b>	<b>6,160,407.65</b>

Notes:

- The amounts on B-3210 (EFSA Grants & Procurement) and B-3501 (Multiannual operational IT projects) are originated from 2018 credits carry forward from previous years.

# BUDGET TRANSFERS

## Initial Budget versus Final Budget

Budget line	Official Budget Item Description	Commitment Appropriation				Payment Appropriation			
		Initial	Transfer	Amended	Final	Initial	Transfer	Amended	Final
A-1100	Basic salary	23,656,327.00	-273,450.55	0.00	23,382,876.45	23,656,327.00	-273,450.55	0.00	23,382,876.45
A-1101	Family allowance	3,203,000.00	-143,380.53	0.00	3,059,619.47	3,203,000.00	-143,380.53	0.00	3,059,619.47
A-1102	Transfer and expatriation allowance	2,608,000.00	-37,133.70	0.00	2,570,866.30	2,608,000.00	-37,133.70	0.00	2,570,866.30
A-1103	Secretarial allowance	13,000.00	-727.30	0.00	12,272.70	13,000.00	-727.30	0.00	12,272.70
A-1113	Stagiaires	899,891.00	92,488.28	0.00	992,379.28	899,891.00	92,488.28	0.00	992,379.28
A-1115	Contract staff	7,162,000.00	106,020.91	0.00	7,268,020.91	7,162,000.00	106,020.91	0.00	7,268,020.91
A-1130	Insurance against sickness	847,000.00	-2,064.47	0.00	844,935.53	847,000.00	-2,064.47	0.00	844,935.53
A-1131	Insurance against accidents and occ	96,000.00	-1,016.11	0.00	94,983.89	96,000.00	-1,016.11	0.00	94,983.89
A-1132	Unemployment insurance for tempor	315,000.00	-685.76	0.00	314,314.24	315,000.00	-685.76	0.00	314,314.24
A-1140	Birth and death allowance	5,000.00	-4,405.07	0.00	594.93	5,000.00	-4,405.07	0.00	594.93
A-1141	Annual leave traveling expenses	270,000.00	13,407.72	0.00	283,407.72	270,000.00	13,407.72	0.00	283,407.72
A-1147	Call on duties	50,000.00	-16,618.17	0.00	33,381.83	50,000.00	-16,618.17	0.00	33,381.83
A-1149	Other allowances and repayments	20,000.00	-20,000.00	0.00	0.00	20,000.00	-20,000.00	0.00	0.00
A-1171	Translation and interpretation	80,000.00	-5,320.00	0.00	74,680.00	80,000.00	-5,320.00	0.00	74,680.00
A-1172	Payment for administrative assistanc	322,485.00	-72,485.00	0.00	250,000.00	322,485.00	-72,485.00	0.00	250,000.00
A-1175	Interim services	1,050,000.00	349,000.00	0.00	1,399,000.00	1,050,000.00	349,000.00	0.00	1,399,000.00
A-1176	Consultancy and HR services	137,000.00	-20,405.12	0.00	116,594.88	137,000.00	-20,405.12	0.00	116,594.88
A-1177	Other services	211,200.00	-7,339.62	-0.38	203,860.00	211,200.00	-7,339.62	-0.38	203,860.00
A-1180	Miscellaneous expenditure on recruit	102,750.00	30,077.37	0.00	132,827.37	102,750.00	30,077.37	0.00	132,827.37
A-1181	Travel expenses (including for memb	15,000.00	-12,888.25	0.00	2,111.75	15,000.00	-12,888.25	0.00	2,111.75
A-1182	Installation resettlement and transfe	150,000.00	-62,283.26	0.00	87,716.74	150,000.00	-62,283.26	0.00	87,716.74
A-1183	Removal expenses	80,000.00	-32,875.60	0.00	47,124.40	80,000.00	-32,875.60	0.00	47,124.40
A-1184	Temporary daily subsistence allowan	60,000.00	-22,711.48	0.00	37,288.52	60,000.00	-22,711.48	0.00	37,288.52
A-1300	Missions and travel expenses	215,000.00	-23,500.00	0.00	191,500.00	215,000.00	-23,500.00	0.00	191,500.00
A-1301	Shuttles for missions and duty	80,000.00	-31,000.00	0.00	49,000.00	80,000.00	-31,000.00	0.00	49,000.00
A-1400	Restaurants meals and canteens	55,000.00	-15,190.12	0.00	39,809.88	55,000.00	-15,190.12	0.00	39,809.88
A-1410	Medical service	270,000.00	-66,922.63	0.00	203,077.37	270,000.00	-66,922.63	0.00	203,077.37
A-1420	Further training language courses a	575,000.00	-205,765.71	0.00	369,234.29	575,000.00	-205,765.71	0.00	369,234.29
A-1520	Visiting experts National Experts or	797,440.00	-11,953.22	0.00	785,486.78	797,440.00	-11,953.22	0.00	785,486.78
A-1610	Social contacts between staff	65,000.00	-36,925.03	0.00	28,074.97	65,000.00	-36,925.03	0.00	28,074.97
A-1630	Early Childhood Centres creches and	1,250,000.00	55,575.52	0.00	1,305,575.52	1,250,000.00	55,575.52	0.00	1,305,575.52
A-1640	Complementary aid for the handicap	10,000.00	-10,000.00	0.00	0.00	10,000.00	-10,000.00	0.00	0.00
A-1700	Reception and entertainment expens	8,000.00	-7,851.00	0.00	149.00	8,000.00	-7,851.00	0.00	149.00
	<b>TITLE I - TOTAL</b>	<b>44,679,093.00</b>	<b>-498,327.90</b>	<b>-0.38</b>	<b>44,180,764.72</b>	<b>44,679,093.00</b>	<b>-498,327.90</b>	<b>-0.38</b>	<b>44,180,764.72</b>

Budget line	Official Budget Item Description	Commitment Appropriation				Payment Appropriation			
		Initial	Transfer	Amended	Final	Initial	Transfer	Amended	Final
A-2000	Rent	47,000.00	-15,672.52	0.00	31,327.48	47,000.00	-15,672.52	0.00	31,327.48
A-2001	Acquisition	1,700,000.00	458,255.43	33,343.59	2,191,599.02	1,700,000.00	458,255.43	33,343.59	2,191,599.02
A-2010	Insurance	39,000.00	-11,412.82	0.00	27,587.18	39,000.00	-11,412.82	0.00	27,587.18
A-2020	Water gas electricity and heating	525,000.00	-24,658.83	0.00	500,341.17	525,000.00	-24,658.83	0.00	500,341.17
A-2030	Maintenance	355,000.00	-3,453.30	0.00	351,546.70	355,000.00	-3,453.30	0.00	351,546.70
A-2031	Cleaning	290,000.00	-1.50	0.00	289,998.50	290,000.00	-1.50	0.00	289,998.50
A-2040	Refurbishment of premises Fitting-ou	398,000.00	248,898.57	0.00	646,898.57	398,000.00	248,898.57	0.00	646,898.57
A-2050	Security and surveillance of buildings	770,000.00	-914.64	0.00	769,085.36	770,000.00	-914.64	0.00	769,085.36
A-2080	Preliminary to construction acquisiti	208,500.00	70,522.78	0.00	279,022.78	208,500.00	70,522.78	0.00	279,022.78
A-2090	Other expenditure on buildings	816,000.00	-105,684.39	0.00	710,315.61	816,000.00	-105,684.39	0.00	710,315.61
A-2100	Purchase / Maintenance of IT equipm	835,949.00	231,099.24	0.00	1,067,048.24	835,949.00	231,099.24	0.00	1,067,048.24
A-2101	Purchase / Maintenance of software	1,095,390.00	-219,615.92	0.00	875,774.08	1,095,390.00	-219,615.92	0.00	875,774.08
A-2103	Software development	1,024,569.00	-178,163.82	0.00	846,405.18	1,024,569.00	-178,163.82	0.00	846,405.18
A-2104	User support	715,069.00	246,849.61	0.00	961,918.61	715,069.00	246,849.61	0.00	961,918.61
A-2200	Technical equipment and installation	95,000.00	-12,473.33	0.00	82,526.67	95,000.00	-12,473.33	0.00	82,526.67
A-2210	Purchase of furniture	434,000.00	-237,979.02	0.00	196,020.98	434,000.00	-237,979.02	0.00	196,020.98
A-2300	Stationery and office supplies	56,500.00	-27,516.76	0.00	28,983.24	56,500.00	-27,516.76	0.00	28,983.24
A-2320	Bank charges	1,000.00	-850.00	0.00	150.00	1,000.00	-850.00	0.00	150.00
A-2330	Legal expenses	85,000.00	103,719.61	0.00	188,719.61	85,000.00	103,719.61	0.00	188,719.61
A-2350	Miscellaneous insurance	7,000.00	-1,528.83	0.00	5,471.17	7,000.00	-1,528.83	0.00	5,471.17
A-2390	Publications	10,000.00	-6,847.00	0.00	3,153.00	10,000.00	-6,847.00	0.00	3,153.00
A-2400	Postal charges	30,000.00	-13,600.00	0.00	16,400.00	30,000.00	-13,600.00	0.00	16,400.00
A-2410	Telecommunications subscriptions a	160,325.00	-72,247.12	0.00	88,077.88	160,325.00	-72,247.12	0.00	88,077.88
A-2411	Purchase and installation of equipme	114,238.00	98,638.28	0.00	212,876.28	114,238.00	98,638.28	0.00	212,876.28
A-2500	Management Board meetings	80,000.00	-27,035.82	0.00	52,964.18	80,000.00	-27,035.82	0.00	52,964.18
	<b>TITLE II - TOTAL</b>	<b>9,892,540.00</b>	<b>498,327.90</b>	<b>33,343.59</b>	<b>10,424,211.49</b>	<b>9,892,540.00</b>	<b>498,327.90</b>	<b>33,343.59</b>	<b>10,424,211.49</b>

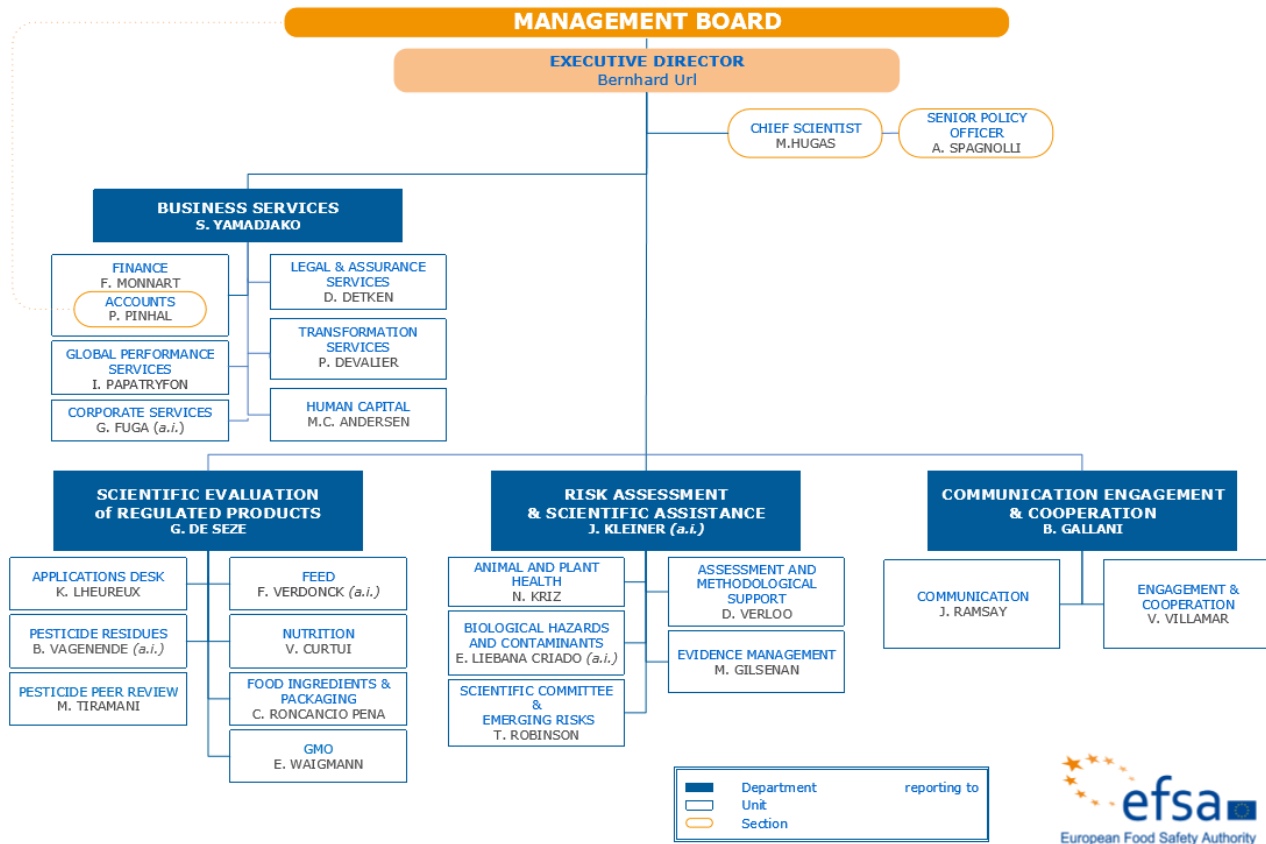
Budget line	Official Budget Item Description	Commitment Appropriation				Payment Appropriation			
		Initial	Transfer	Amended	Final	Initial	Transfer	Amended	Final
B-3020	REPRO Experts meetings	3,110,200.00	-386,082.62	0.00	2,724,117.38	3,110,200.00	-386,082.62	0.00	2,724,117.38
B-3120	RASA Experts meetings	2,622,500.00	-21,246.57	0.00	2,601,253.43	2,622,500.00	-21,246.57	0.00	2,601,253.43
B-3130	Crisis support	6,850.00	-6,850.00	0.00	0.00	6,850.00	-6,850.00	0.00	0.00
B-3210 *	EFSA Grants & Procurement	7,625,985.00	244,439.98	0.00	7,870,424.98	7,565,585.00	244,439.98	-700,000.00	7,110,024.98
B-3220	Scientific Cooperations meetings	79,000.00	-25,311.15	0.00	53,688.85	79,000.00	-25,311.15	0.00	53,688.85
B-3410	Risk Communication web managem	1,202,000.00	-85,844.58	0.00	1,116,155.42	1,202,000.00	-85,844.58	0.00	1,116,155.42
B-3420	External relations	235,000.00	-56,436.26	0.00	178,563.74	235,000.00	-56,436.26	0.00	178,563.74
B-3500	Operational IT Systems	4,959,274.00	446,276.14	0.00	5,405,550.14	4,959,274.00	446,276.14	0.00	5,405,550.14
B-3501 *	Multiannual operational IT projects	0.00	0.00	0.00	0.00	60,400.00	0.00	0.00	60,400.00
B-3511	Translation Interpretation Linguistic	180,000.00	17,000.00	0.00	197,000.00	180,000.00	17,000.00	0.00	197,000.00
B-3512	Library	580,000.00	-147.02	0.00	579,852.98	580,000.00	-147.02	0.00	579,852.98
B-3513	Mission of staff related to operationa	850,000.00	-138,000.00	0.00	712,000.00	850,000.00	-138,000.00	0.00	712,000.00
B-3514	Shuttles and prepaid travels for expe	2,050,000.00	-360,527.65	0.00	1,689,472.35	2,050,000.00	-360,527.65	0.00	1,689,472.35
B-3520	Conferences & Outreach	521,000.00	42,725.06	0.00	563,725.06	521,000.00	42,725.06	0.00	563,725.06
B-3530	Operational Development & Control	1,160,000.00	452,754.67	0.00	1,612,754.67	1,160,000.00	452,754.67	0.00	1,612,754.67
B-3540	Quality Management	200,000.00	-122,750.00	0.00	77,250.00	200,000.00	-122,750.00	0.00	77,250.00
	<b>TITLE III - TOTAL</b>	<b>25,381,809.00</b>	<b>0.00</b>	<b>0.00</b>	<b>25,381,809.00</b>	<b>25,381,809.00</b>	<b>0.00</b>	<b>-700,000.00</b>	<b>24,681,809.00</b>
	<b>GRAND TOTAL</b>	<b>79,953,442.00</b>	<b>0.00</b>	<b>33,343.21</b>	<b>79,986,785.21</b>	<b>79,953,442.00</b>	<b>0.00</b>	<b>-666,656.79</b>	<b>79,286,785.21</b>

Notes:

\* - The appropriations on the B-3210 (EFSA Grants & Procurement) and B-3501 (Multiannual operational IT projects) are of type differentiated appropriations. The commitments appropriations extends over more than one financial year and payment appropriations are not carried forward.

# EFSA's ORGANISATIONAL CHART

(December 2019)



## ESTABLISHMENT PLAN 2019 & FILLED POSTS

Category and grade	Posts					
	2018		2019		2019	
	Occupied posts at 31.12.2018		Authorized posts for 2019		Occupied posts at 31.12.2019	
	Permanent agent	Temporary agent	Permanent agent	Temporary agent	Permanent agent	Temporary agent
AD16						
AD15				1		1
AD14		1				
AD13				2		1
AD12		6		7		5
AD11		6		9		7
AD10		13		20		14
AD9		26		38		30
AD8	1	60	2	57	2	61
AD7	4	48	3	45	3	49
AD6		38		27		35
AD5		8		9		7
<b>Total AD</b>	<b>5</b>	<b>206</b>	<b>5</b>	<b>215</b>	<b>5</b>	<b>210</b>
AST11						
AST10						
AST9						
AST8				1		
AST7		3		3		3
AST6		4		7		6
AST5		16		21		16
AST4		36		32		36
AST3		22		20		19
AST2		17		15		17
AST1		2		1		1
<b>Total AST</b>	<b>0</b>	<b>100</b>	<b>0</b>	<b>100</b>	<b>0</b>	<b>98</b>
<b>Total</b>	<b>5</b>	<b>306</b>	<b>5</b>	<b>315</b>	<b>5</b>	<b>308</b>
<b>Grand total</b>	<b>311</b>		<b>320</b>		<b>313</b>	

Please note that the figures 31.12.2018 includes 1 accepted offer letter for post with starting date in 2019.  
Please note that the figures 31.12.2019 includes 1 accepted offer letter for post with starting date in 2020.

### CONTRACTUAL AGENTS & SECONDED NATIONAL EXPERTS (SNE's)

Description	2018	2019
- Contractual agents	120	129
- SNE	14	15
<b>Total</b>	<b>134</b>	<b>144</b>