

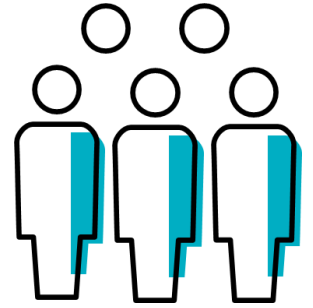
# Management of the German Article 36 network

12.09.2024, 55<sup>th</sup> Focal Point Meeting, Tirana

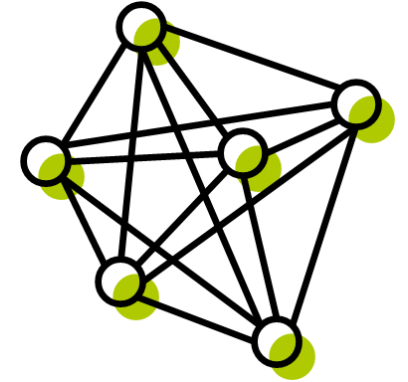
**Dr Phoebe Young**

# Maintenance of the list of Art.36 organisations

- Nomination of new organisations (structured national process)
- Updates of the Art.36 database
- Under review: national yearly report of activities



# Meetings of the German Art.36 network



Two to three online meetings per year (1.5 hours each):

## General meetings

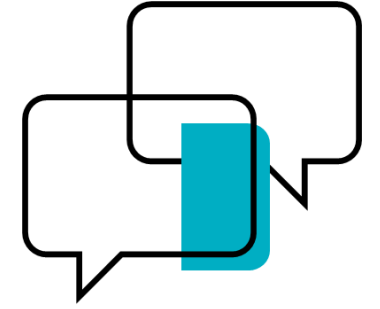
- News that are not specific to any subject
- National processes
- FP's contact persons in the Art.36 institutions

## Topical meetings

- Subjects chosen as needed
- Data: 2022, 2023, 2024
- CoCo: 2024
- FP's contact persons in the Art.36 institutions **and** relevant experts from the Art.36 institutions

# Routine interactions

- Information dissemination (newsletter, targeted)
- Contact with regard to the AF meetings
- Contact with experts in the EFSA scientific networks
- Surveys on grants & procurements and on training needs



Dr Phoebe Young

German Federal Institute for Risk Assessment  
[bfr.bund.de/en](https://bfr.bund.de/en)











valid for texts produced by the BfR  
images/photos/graphics are excluded unless otherwise indicated

**BfR** | Identifying Risks –  
Protecting Health

Consumer health protection to go  
**BfR2GO – the BfR Science Magazine**

[bfr.bund.de/en/science\\_magazine\\_bfr2go.html](https://bfr.bund.de/en/science_magazine_bfr2go.html)

Follow us

-  @bfrde | @bfren | @Bf3R\_centre
-  @bfrde
-  [youtube.com/@bfr\\_bund](https://youtube.com/@bfr_bund)
-  [social.bund.de/@bfr](https://social.bund.de/@bfr)
-  [linkedin.com/company/bundesinstitut-f-r-risikobewertung](https://linkedin.com/company/bundesinstitut-f-r-risikobewertung)
-  [soundcloud.com/risikobewertung](https://soundcloud.com/risikobewertung)
-  [threads.net/@bfrde](https://threads.net/@bfrde)
-  [sbsky.app/profile/bfrde.bsky.social](https://sbsky.app/profile/bfrde.bsky.social)