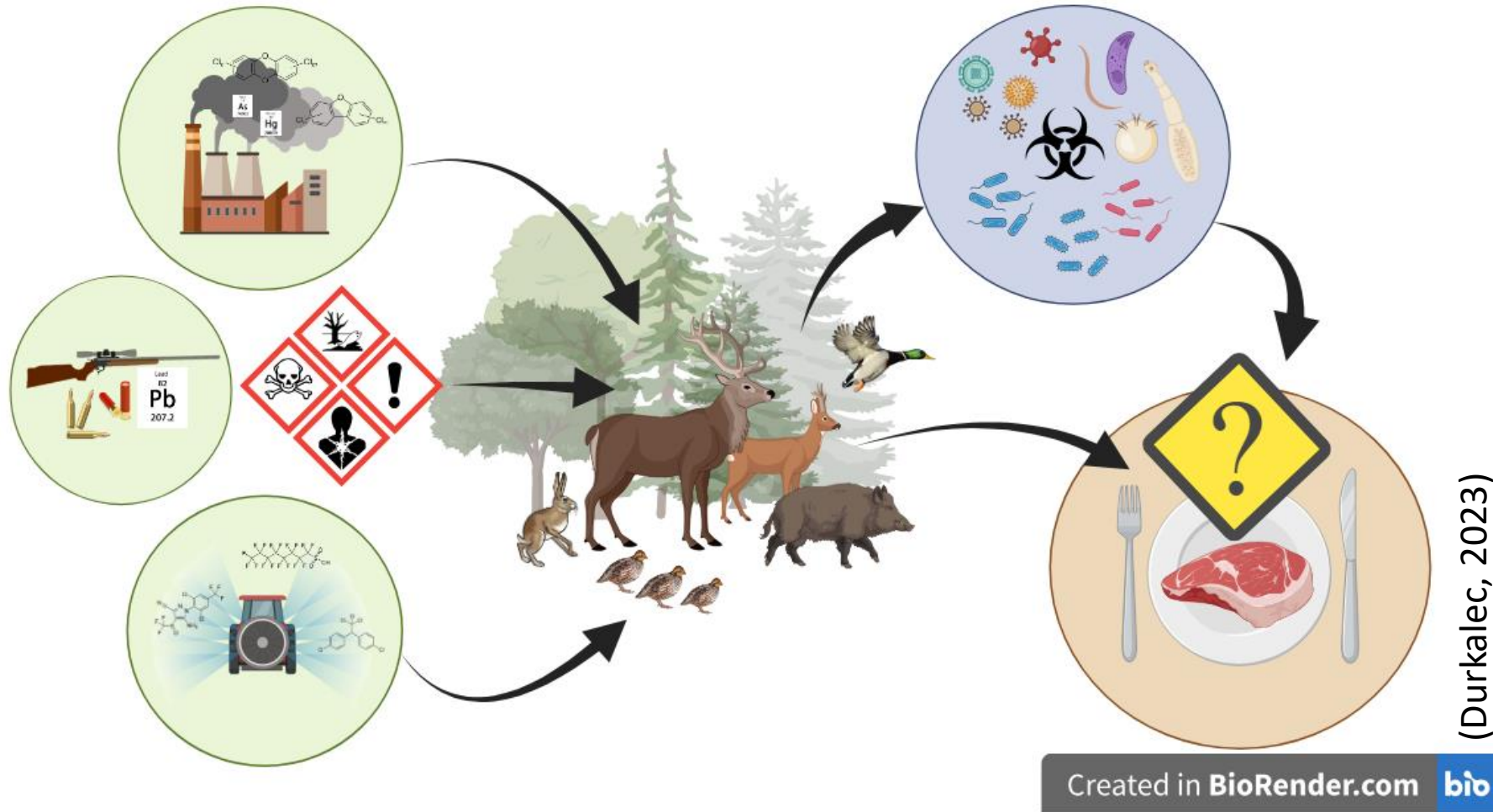


# **The Network Safety in the Game Meat Chain (COST Action 22166)**

**Dr. Anneluise Mader**

**Unit – BfR-Center for Land Use Related Evaluation Methods, One Health Approaches  
Department – Safety in the Food Chain  
The German Federal Institute for Risk Assessment**

# Use Related Evaluation Methods, One Health Approaches



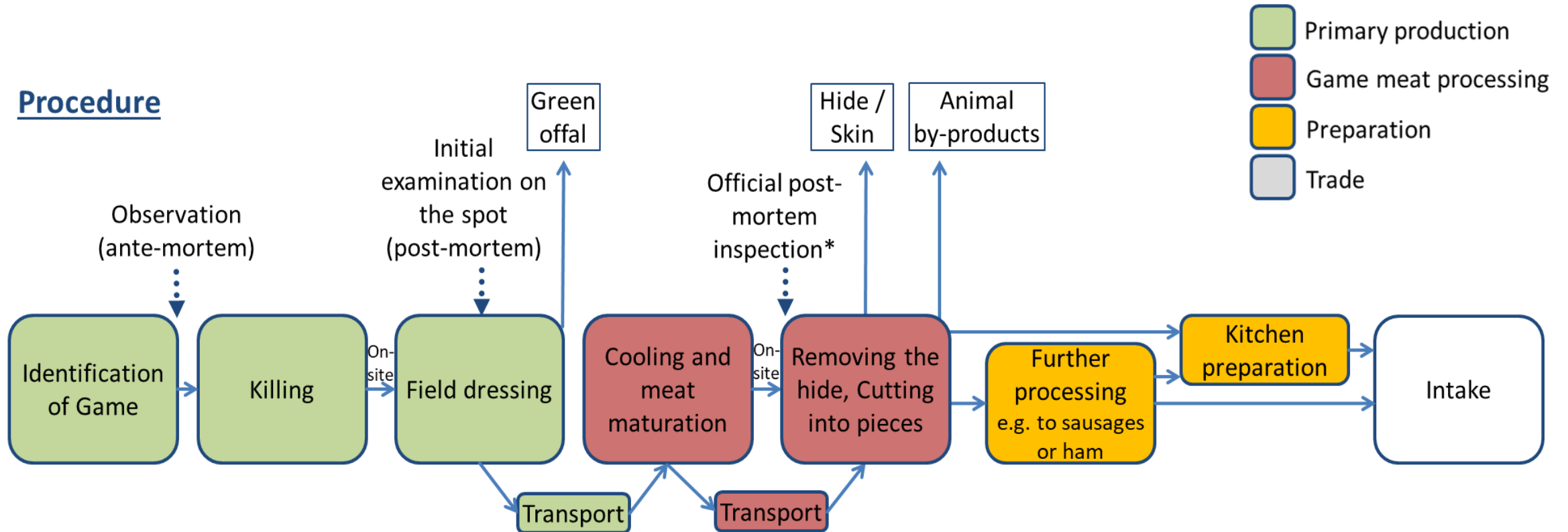
(Durkalec, 2023)

Created in BioRender.com **bio**

# The game meat chain

product flows in Europe

## Procedure



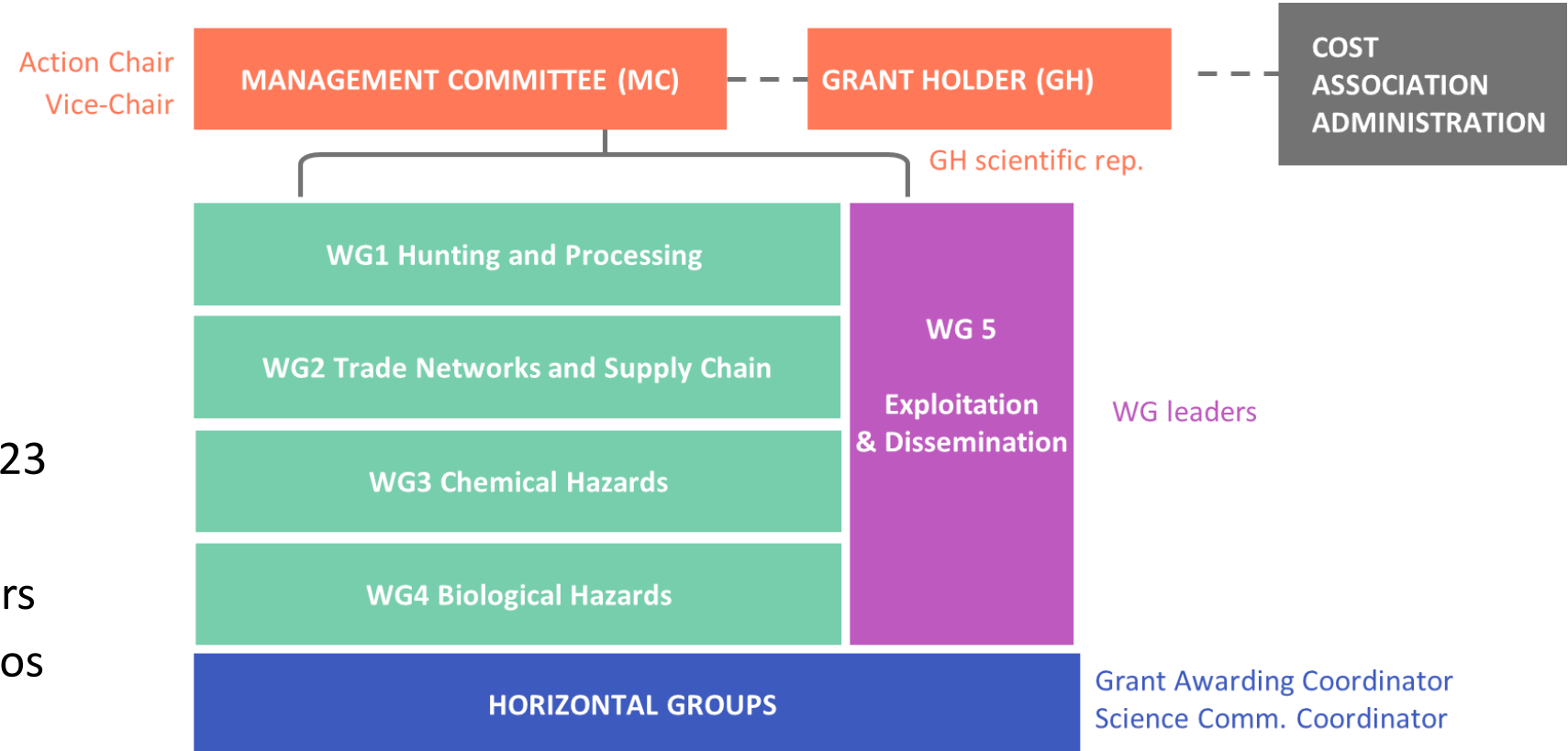
# COST Action Synopsis



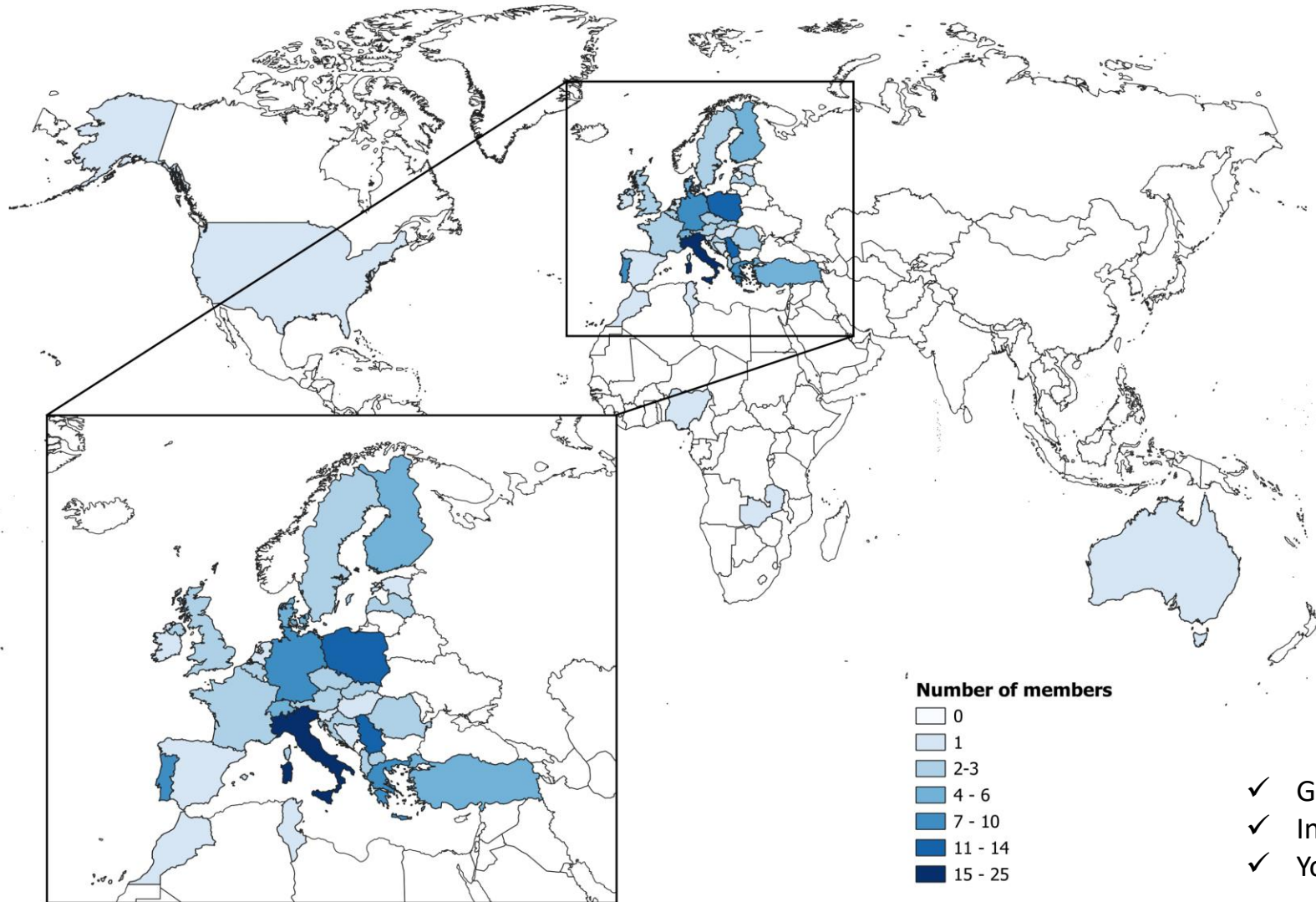
## Main aims are

- To establish a network of experts.
- To promote and harmonize food safety standards.

**Start** November 2023  
**Duration** 4 years  
**Currently** > 140 members  
**Budget** > 600 000 Euros



# COST Action SafeGameMeat (CA22166)



## Specific support requested from

- Armenia
- Bulgaria
- Cyprus
- Georgia
- Iceland
- Lithuania
- Luxembourg
- The Republic of Moldova
- Montenegro
- Norway
- Ukraine

- ✓ Gender balance
- ✓ Inclusiveness Target Countries (ITC)
- ✓ Young Researchers and Innovators (YRI)

Dr. Annelise Mader  
T +49 30 18412-28900  
[safegame@bfr.bund.de](mailto:safegame@bfr.bund.de)

Bundesinstitut für Risikobewertung  
[bfr.bund.de](http://bfr.bund.de)

**BfR** | Risiken erkennen –  
Gesundheit schützen

Verbraucherschutz zum Mitnehmen

**BfR2GO – das Wissenschaftsmagazin des BfR**

[bfr.bund.de/de/wissenschaftsmagazin\\_bfr2go.html](http://bfr.bund.de/de/wissenschaftsmagazin_bfr2go.html)


Folgen Sie uns

 @bfrde | @bfren | @Bf3R\_centre

 @bfrde

 [youtube.com/@bfr\\_bund](https://youtube.com/@bfr_bund)

 [social.bund.de/@bfr](https://social.bund.de/@bfr)

 [linkedin.com/company/bundesinstitut-f-r-risikobewertung](https://linkedin.com/company/bundesinstitut-f-r-risikobewertung)