



Food Additive Intake Model (FAIM) template 2.0

Davide Arcella
Data Unit

Inputting data using the additive
usage template & an introduction to
the Food Additive Intake Model (FAIM)

Parma, 5th September 2018

OVERALL OBJECTIVE OF THE FAIM TEMPLATE

- **Objective:**
screening tool for the assessment of chronic dietary exposure to:
 - new food additives, or
 - new uses of already authorised food additives.
- **End users:**
 - applicants,
 - risk assessors, and
 - risk managers.



FOOD ADDITIVES INTAKE MODEL (FAIM) 2.0



It is based on raw individual food consumption data from different population groups and European countries, directly from the EFSA data warehouse.

EDITORIAL_EFSA Data Analysis Library (EFSA) - Consumption Deprecated > Shared Reports > Test > FAIM > FAIM Model

FAIM MODEL DEFINITION

Herbs, spices, seasonings (Not Specified)	12.2	0.000000	0.000000
Vinegars	12.3	0.000000	0.000000
Mustard	12.4	0.000000	0.000000
Soups and broths	12.5	0.000000	0.000000
Sauces	12.6	0.000000	0.000000
Salads and savoury based sandwich spreads	12.7	0.000000	0.000000
Yeast and yeast products	12.8	0.000000	0.000000
Protein products, excluding products covered in category 1.8	12.9	0.000000	0.000000
Foods for infants and young children (Not Specified)	13.1	0.000000	0.000000
Dietary foods for special medical purposes defined in Directive 1999/21/EC (excluding products from food category 13.1.5)	13.2	0.000000	0.000000
Dietary foods for weight control diets intended to replace total daily food intake or an individual meal (the whole or part of the total daily diet)	13.3	0.000000	0.000000
Foods suitable for people intolerant to gluten as defined by Regulation (EC) No 41/2009	13.4	0.000000	0.000000
Water, including natural mineral water as defined in Directive 2009/54/EC and spring water and all other bottled or packed waters	14.1.1	0.000000	0.000000
Fruit juices as defined by Directive 2001/112/EC	14.1.2.1	0.000000	15.000000
Vegetable juices	14.1.2.2	0.000000	0.000000
Fruit nectars as defined by Directive 2001/112/EC and vegetable nectars and similar products	14.1.3	0.000000	0.000000
Flavoured drinks	14.1.4	0.000000	0.000000
Flavoured drinks with sugar	14.1.4.1	0.000000	0.000000
Flavoured drinks with sweetener	14.1.4.2	0.000000	0.000000
Coffee, tea, herbal and fruit infusions, chicory; tea, herbal and fruit infusions and chicory extracts; tea, plant, fruit and cereal preparations for infusions, as well as mixes and instant mixes of these products (Not Specified)	14.1.5	0.000000	0.000000
Beer and malt beverages	14.2.1	0.000000	0.000000
Wine and other products defined by Regulation (EC) No 1234/2007, and alcohol free counterparts	14.2.2	0.000000	0.000000

Submit

Discard

EXAMPLE - ADDITIVE LEVELS

Additive level
(mg/kg)



8

Food additive categories

1.1

Unflavoured pasteurised and sterilised (including UHT) milk

5

01.7.4

Whey cheese

21

6.3

Breakfast cereals

15

14.1.2.1

Fruit juices as defined by Directive 2001/112/EC

DIETARY EXPOSURE ASSESSMENT USING INDIVIDUAL DATA



Peter



Peter's weight: 18 kg

Food additive categories



	Consumption DAY 1 (g/day)	Consumption DAY 2 (g/day)	Average Consumption (g/day)
Milk	200	100	150
Cheese	0	250	125
Cornflakes	80	80	80
Orange juice	400	0	200

DIETARY EXPOSURE ASSESSMENT USING INDIVIDUAL DATA



Peter



Peter's weight: 18 kg

Food additive categories



Average consumption (g/day)

Additive level (mg/kg)

Chronic exposure (mg/day)

150

8

1.2



125

5

0.6



80

21

1.7



200

15

3

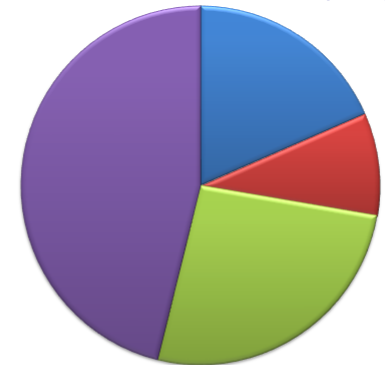
Total chronic exposure in mg per day: 6.5

Total chronic exposure in mg/kg bw per day: 0.36

DIETARY EXPOSURE DISTRIBUTION

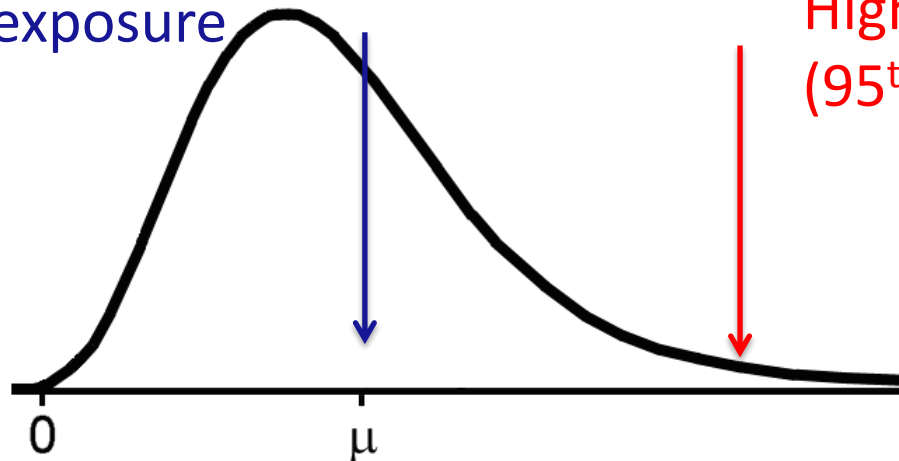


Mean exposure contribution (%)



- Unflavoured pasteurised and sterilised (including UHT) milk
- Unflavoured fermented milk products, heat-treated after fermentation
- Breakfast cereals
- Fruit juices as defined by Directive 2001/112/EC and vegetable juices

Mean exposure



High exposure
(95th percentile)

FOOD CONSUMPTION DATA USED BY FAIM 2.0

Number of

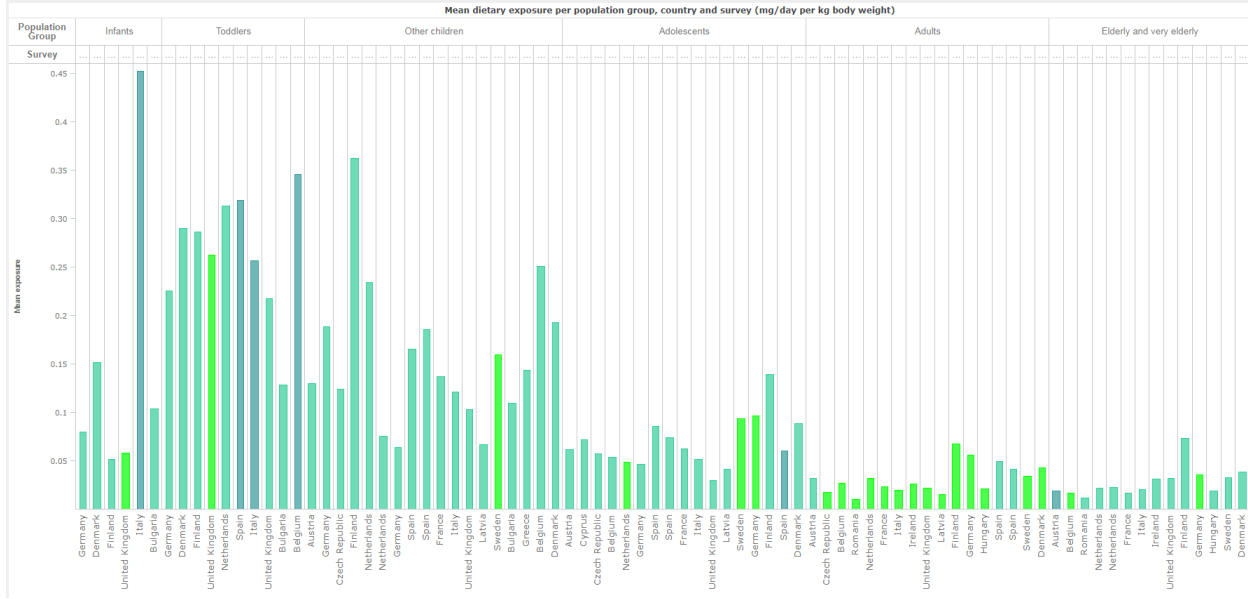
Subjects 66,025

Consumption events 6,835,409

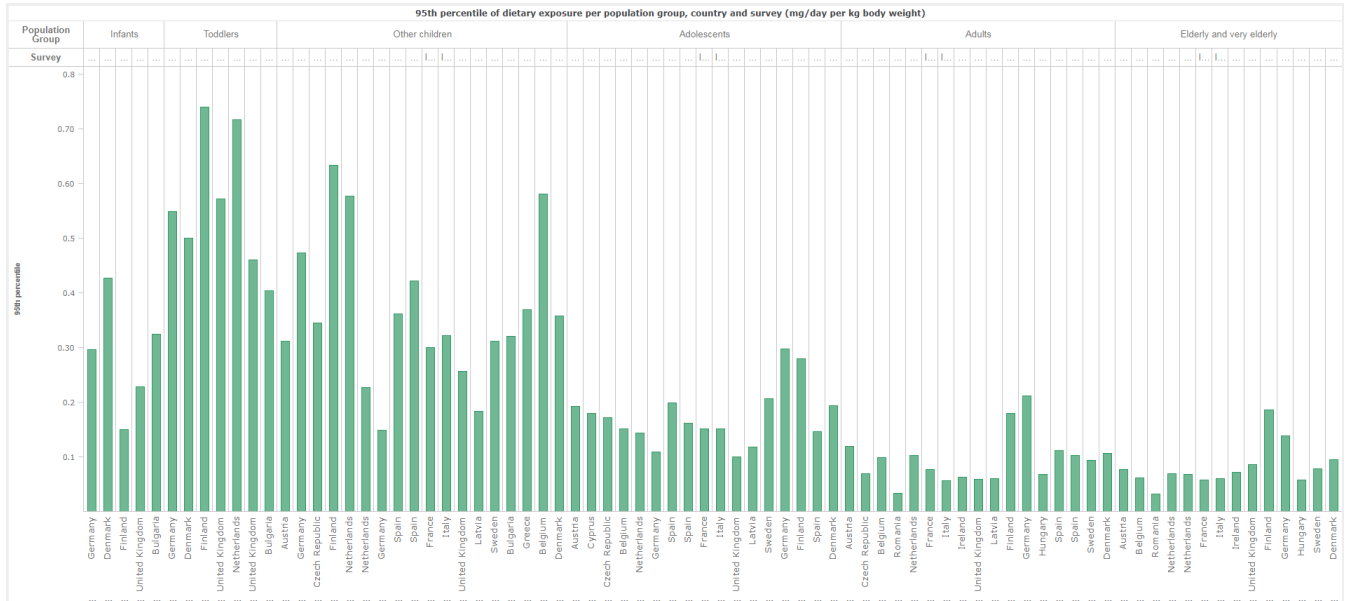
Age class	Age range	Number of surveys	Number of countries
Infants	3 – 12 months	6	6
Toddlers	1 – 3 years	10	9
Children	3 – 10 years	18	15
Adolescents	10 – 18 years	17	14
Adults	18 – 65 years	17	16
Elderly and very elderly	> 65 years	13	13

EXAMPLE: MEAN AND 95TH PERCENTILE OF EXPOSURE FROM FAIM

Mean dietary exposure per population group, country and survey (mg/day per kg body weight)



95th percentile of dietary exposure per population group, country and survey (mg/day per kg body weight)



EXAMPLE: EXPOSURE SOURCES (%)

Exposure sources (%) per population group, country and survey



Food Categories

- 14.1.2.1 Fruit juices as defined by Directive 2001/11...
- 06.3 Breakfast cereals
- 01.7.4 Whey cheese
- 01.1 Unflavoured pasteurised and sterilised (includ...

THANKS



Subscribe to

www.efsa.europa.eu/en/news/newsletters

www.efsa.europa.eu/en/rss



Engage with careers

www.efsa.europa.eu/en/engage/careers



Follow us on Twitter

[@efsa_eu](https://twitter.com/efsa_eu)

[@plants_efsa](https://twitter.com/plants_efsa)

[@methods_efsa](https://twitter.com/methods_efsa)